

Mada M5 - NA

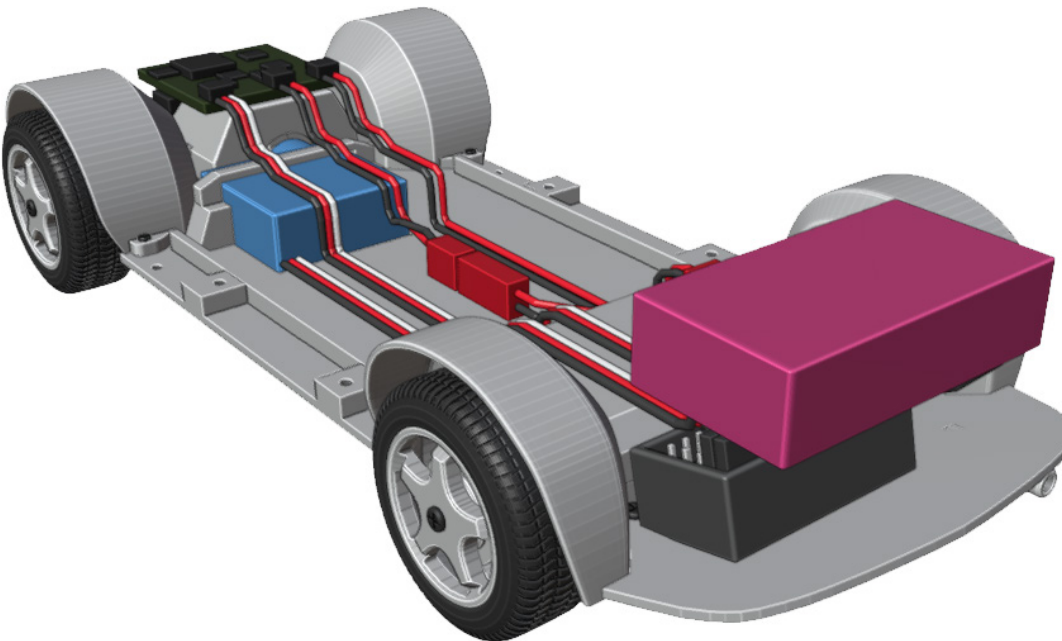
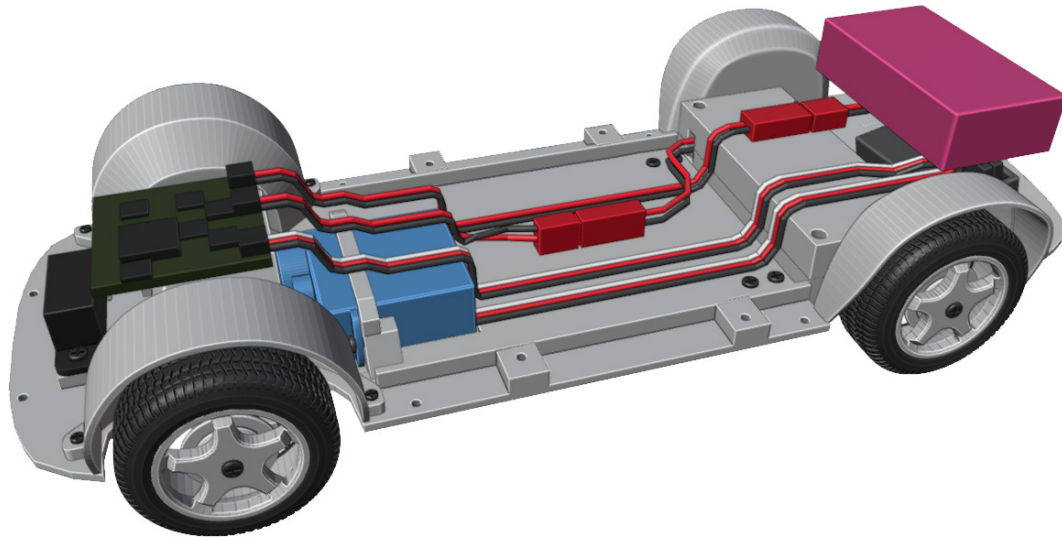
1:24 scale, fully 3D printed on FDM



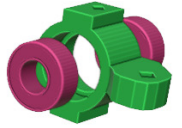
More models at:

www.3drcmodels.com

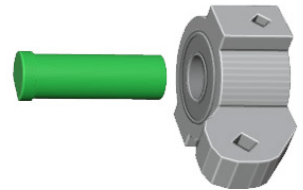
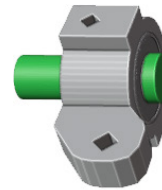
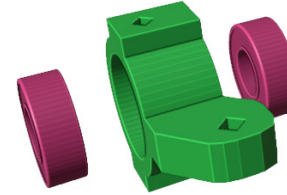
1. Chassis



4x 3x6x2mm bearings has to fit tightly



1

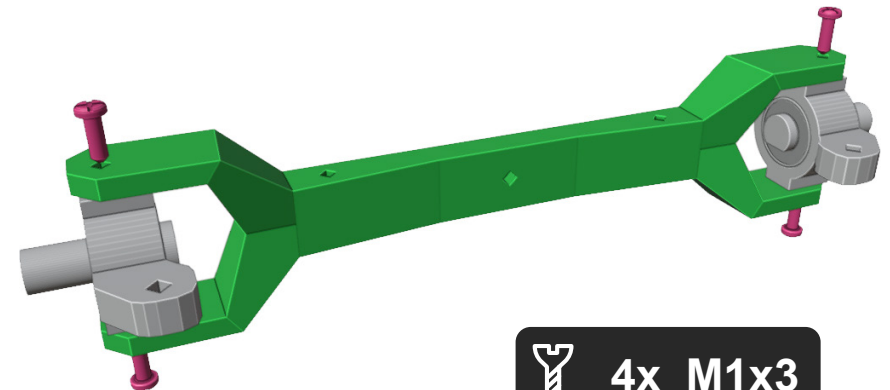


2



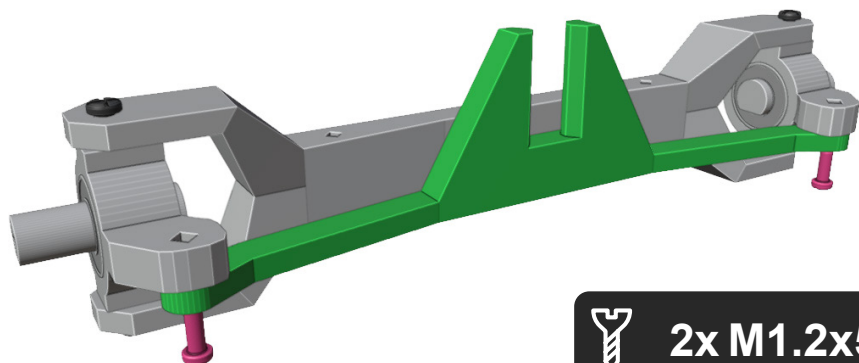
Shaft has to fit tightly

3



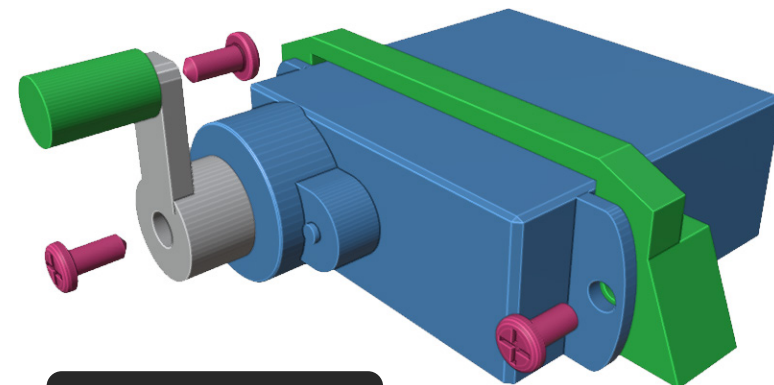
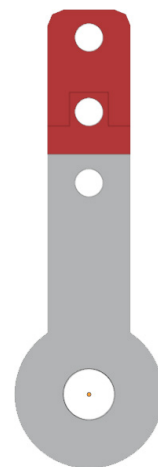
4x M1x3

4



 2x M1.2x5

6

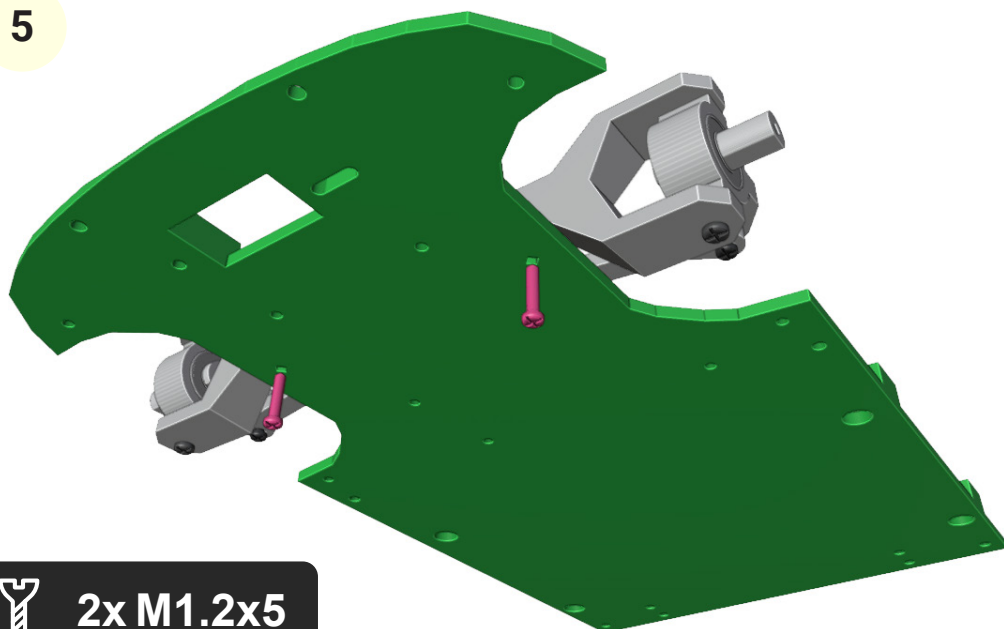


 3x M1.2x4



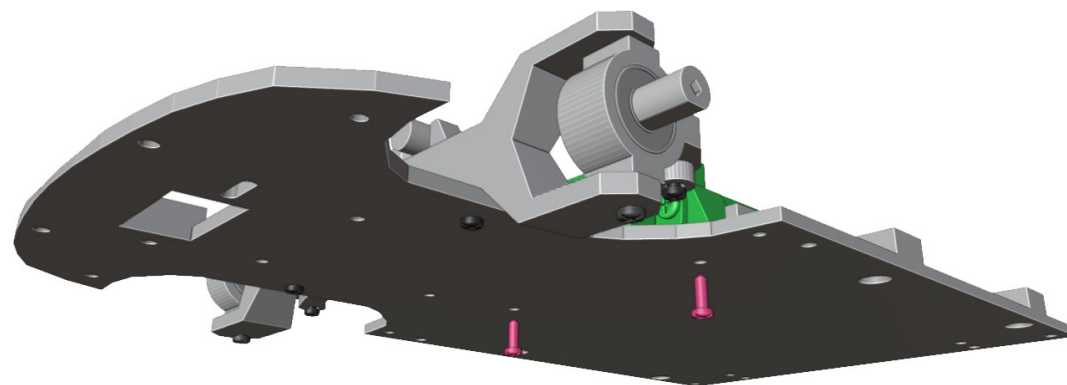
You need to cut red part of steering pin so it fits under cover.

5

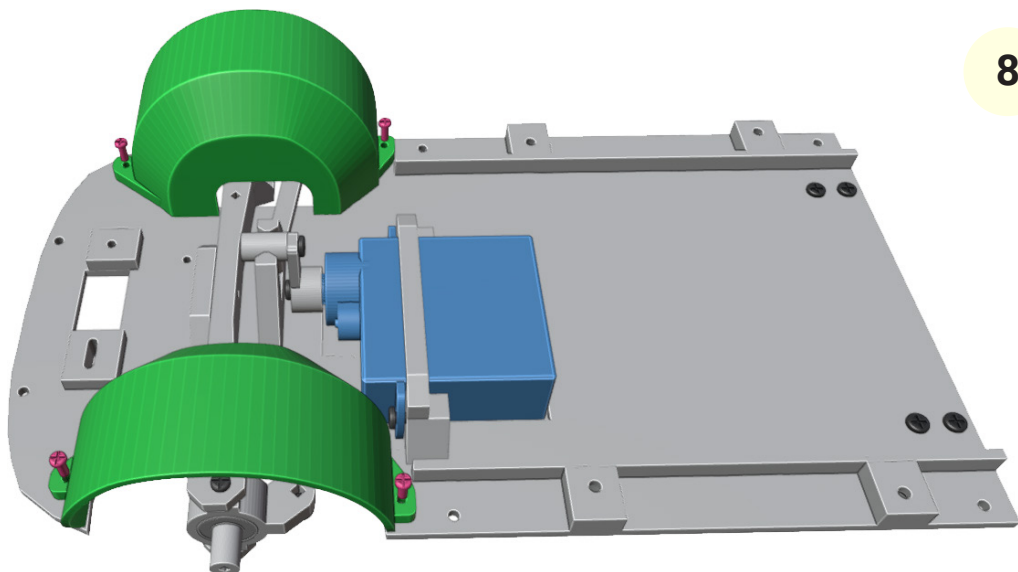


 2x M1.2x5

7

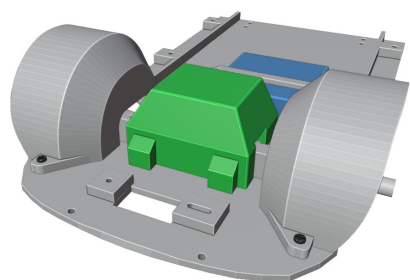


 2x M1x5



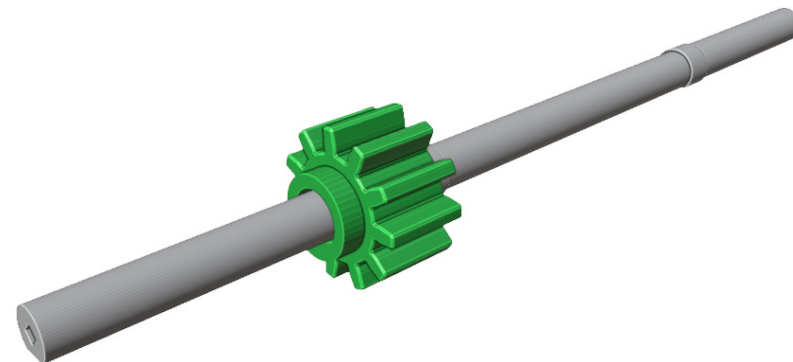
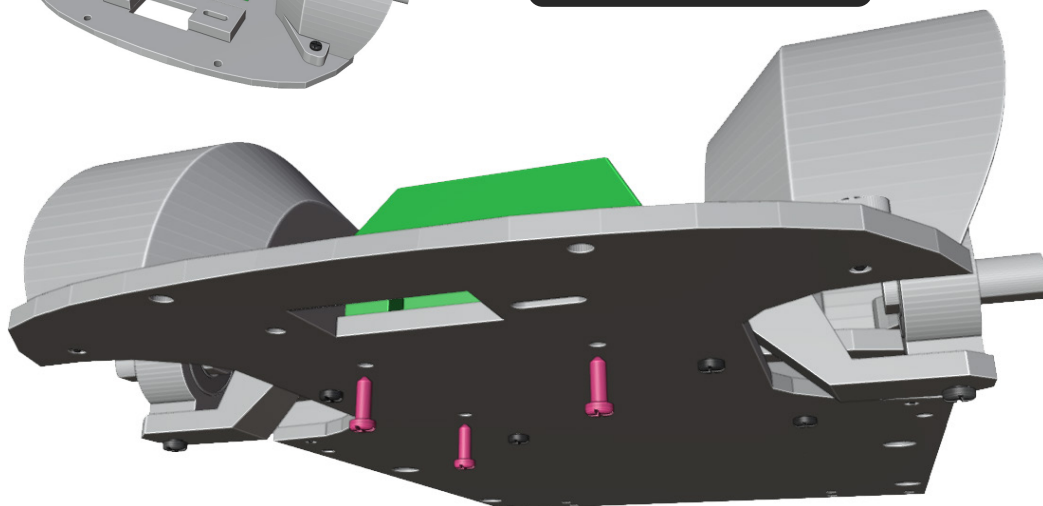
8

 2x M1x3

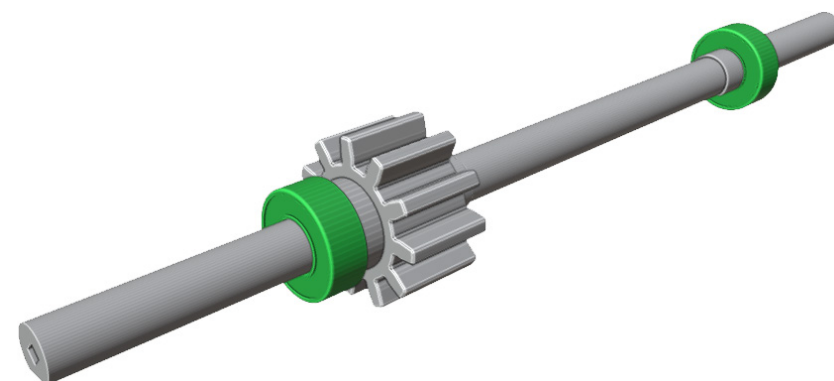


9

 3x M1x4



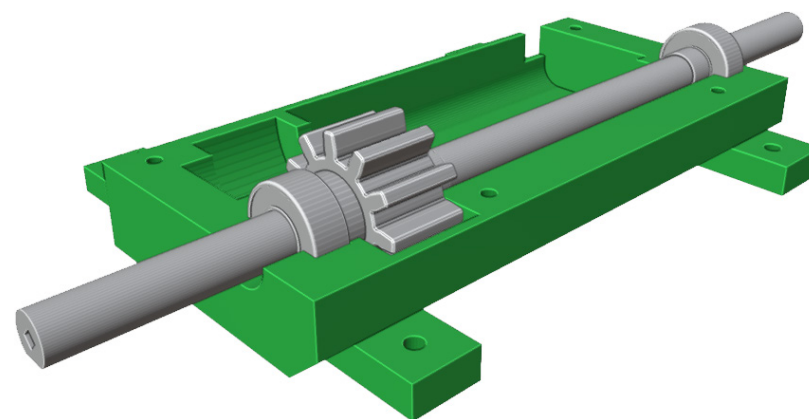
10



11

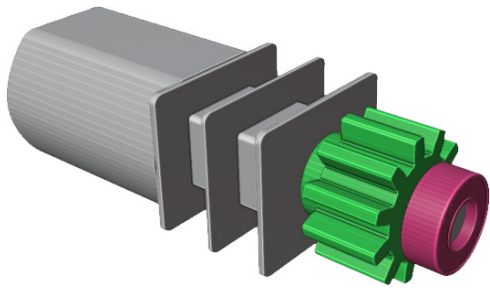


2x 3x6x2mm bearings has to fit tightly



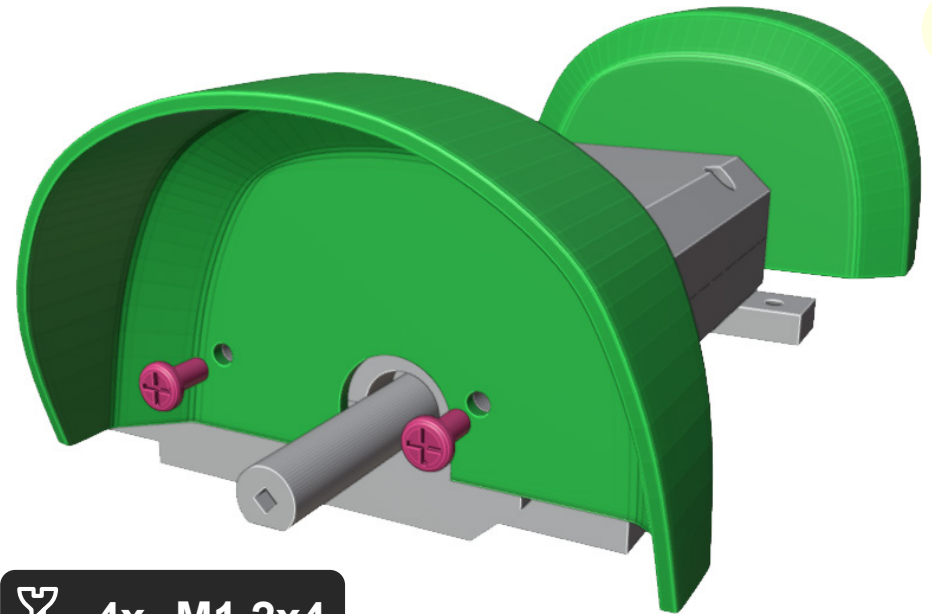
12

13



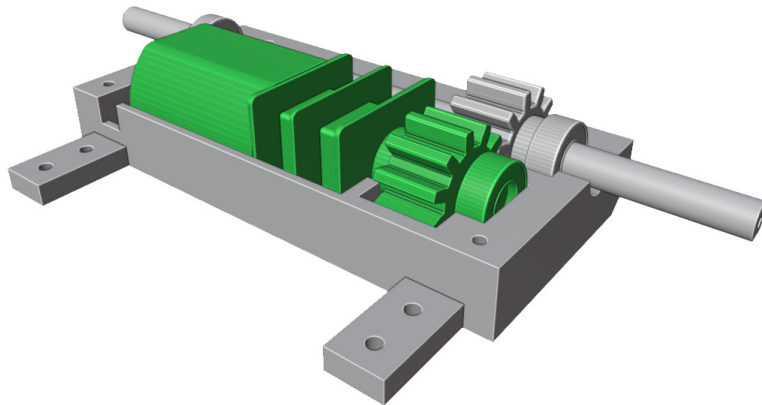
You can choose motor RPM.
For faster driving use 500 -
1000 RPM. I have used 1000
RPM.

16

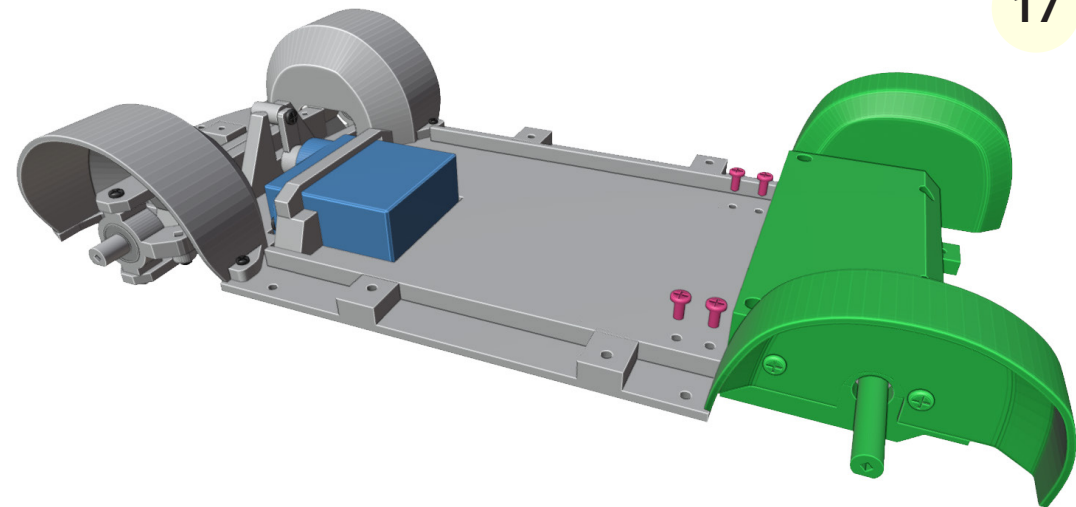


4x M1.2x4

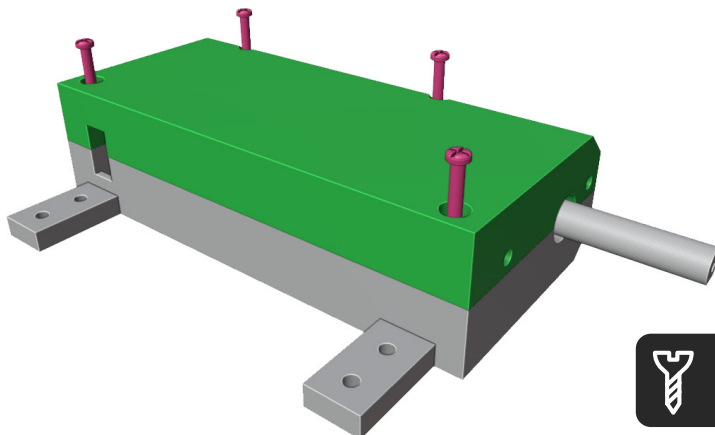
14



17



15

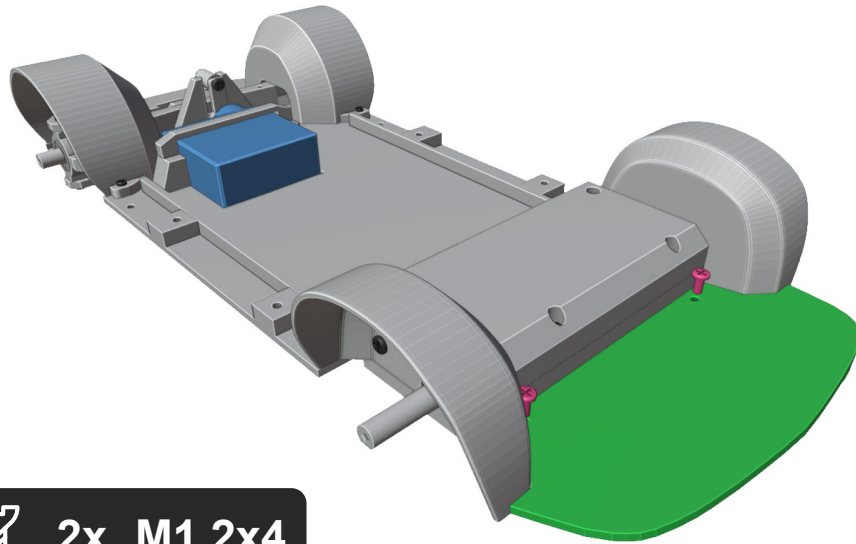


4x M1x5



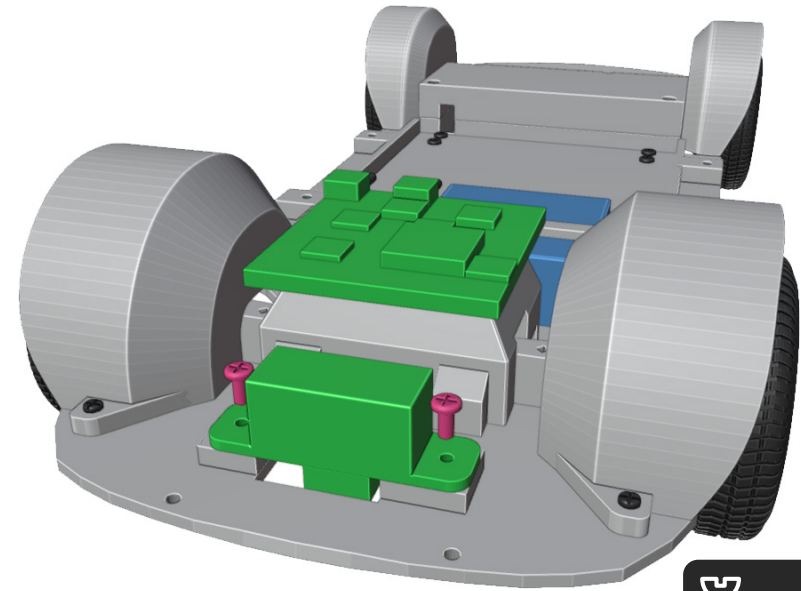
4x M1.2x4

18



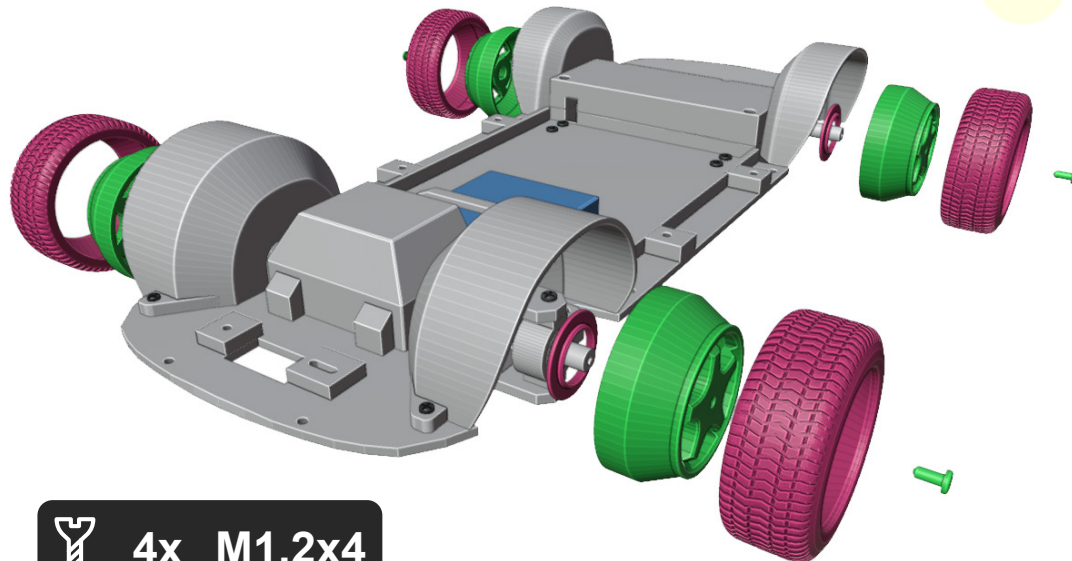
2x M1.2x4

20

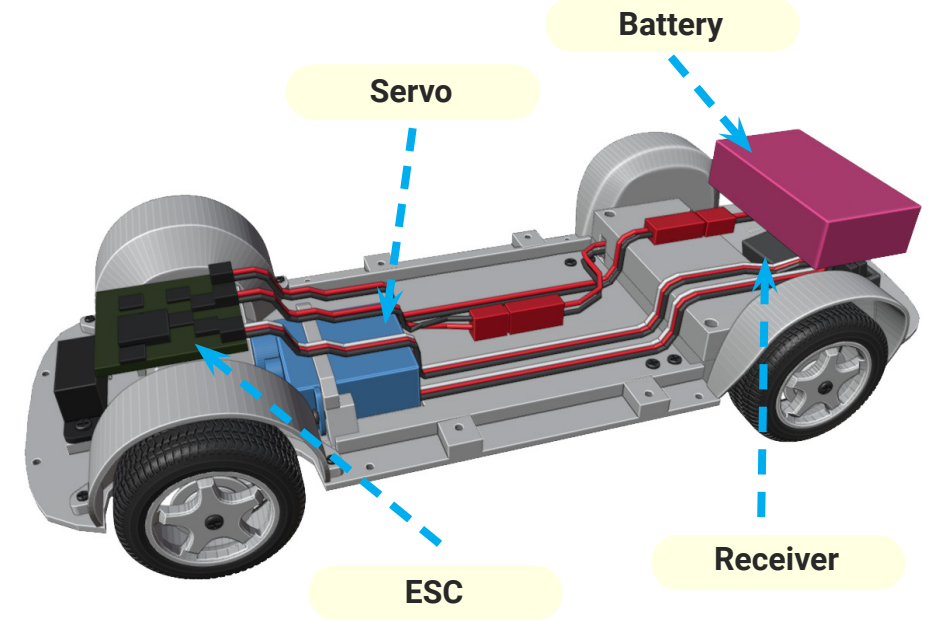


2x M1.2x3

19



4x M1.2x4



21

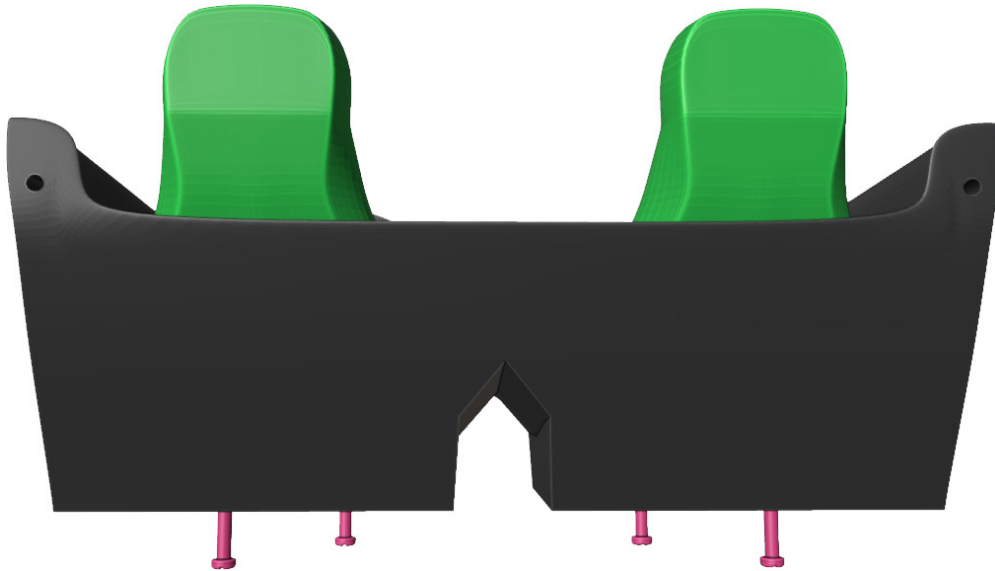
2. Interior



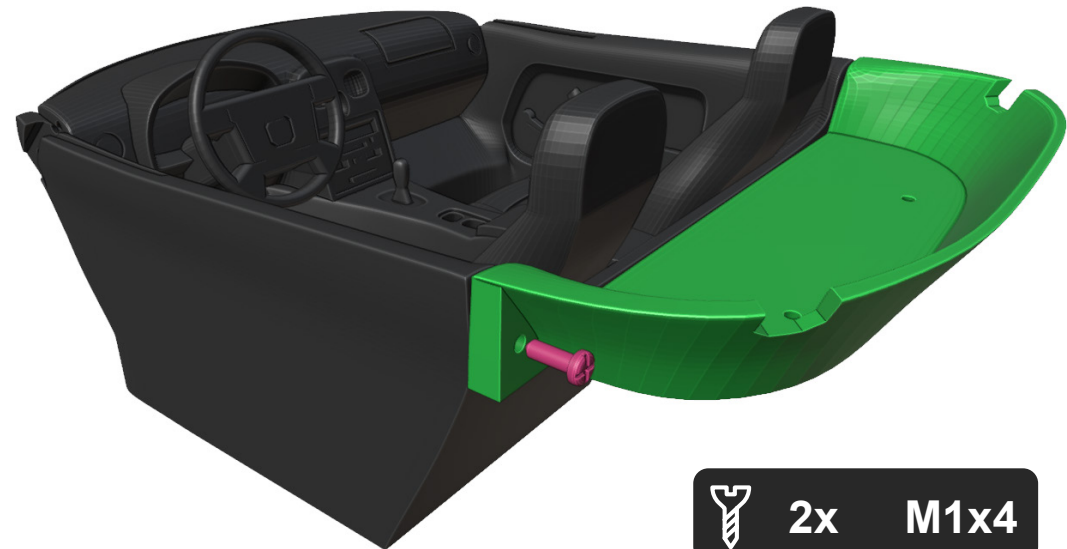
22



4x M1.2x4



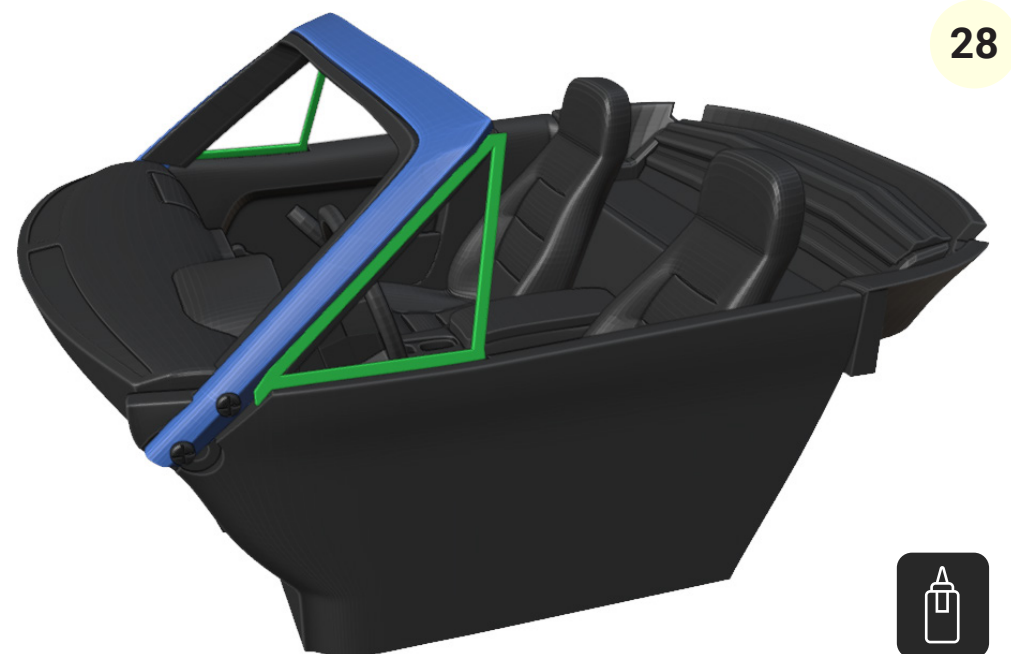
23



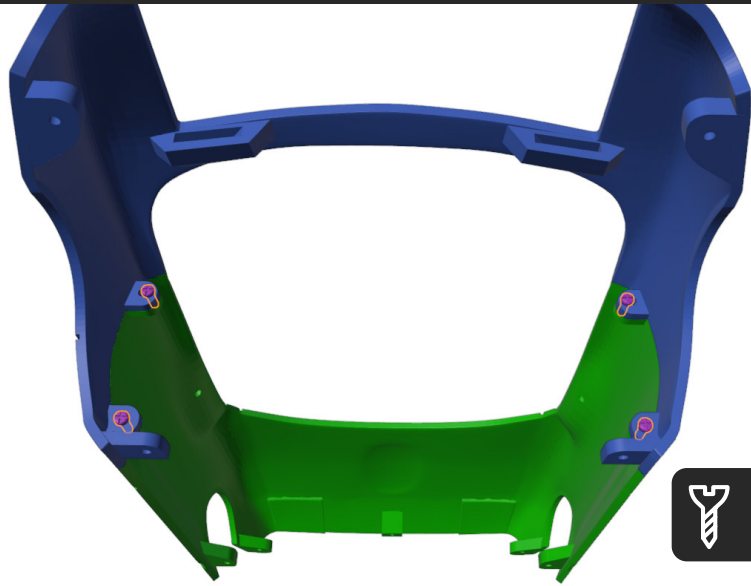
24



2x M1x4



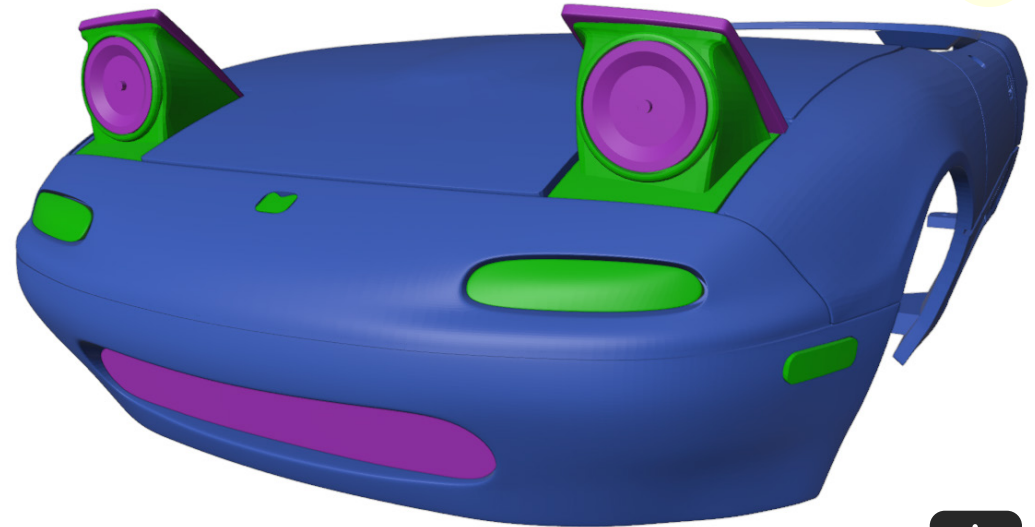
3. Body



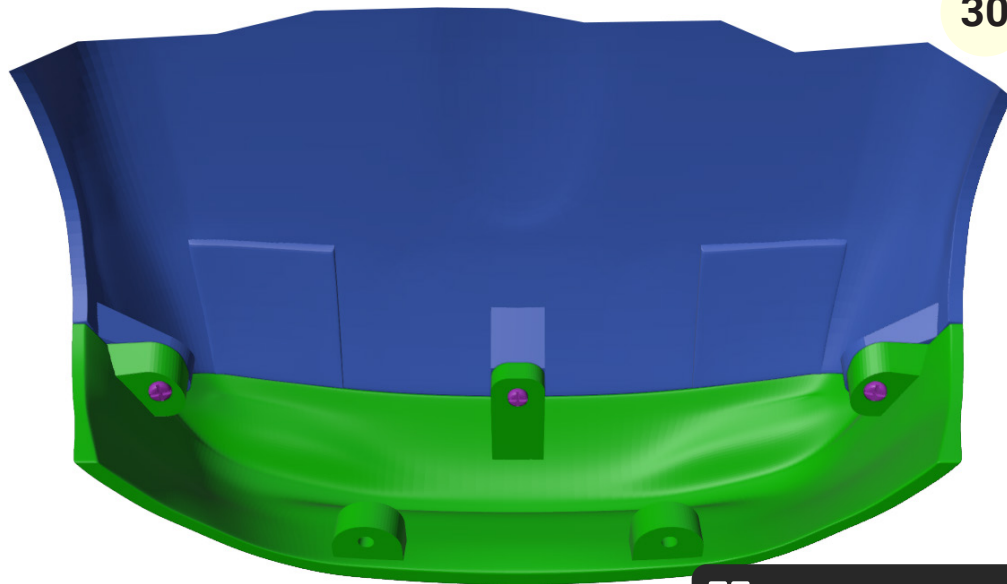
29



4x M1x5



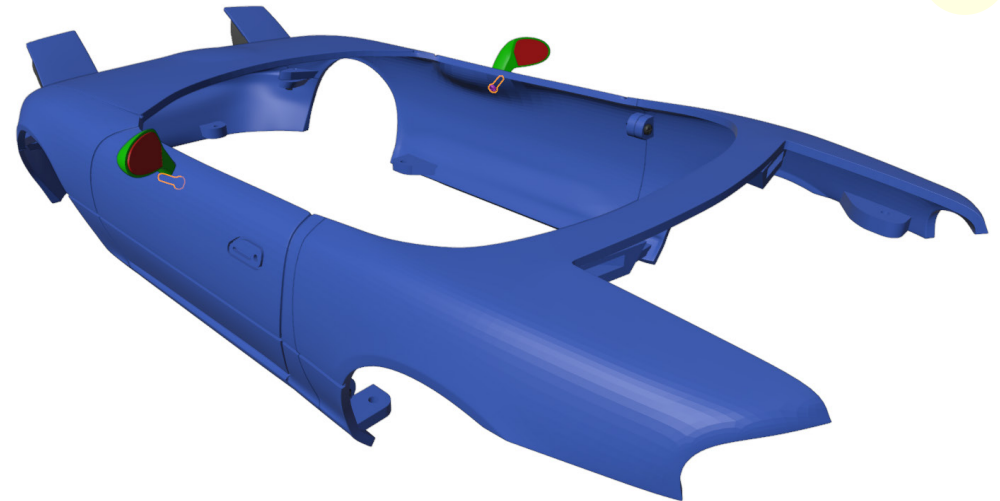
31



30



3x M1x5



32



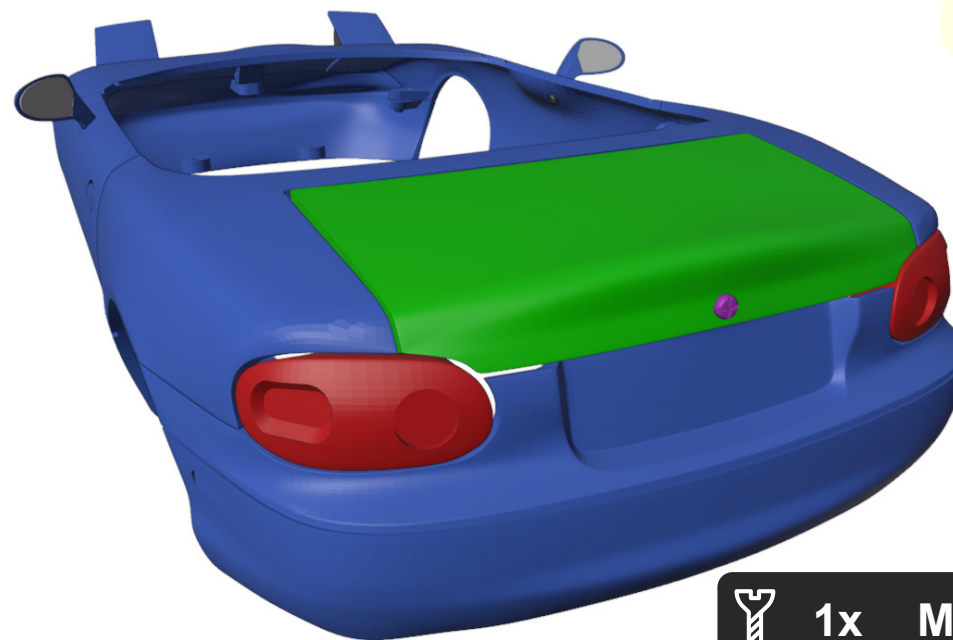
2x M1x4

33



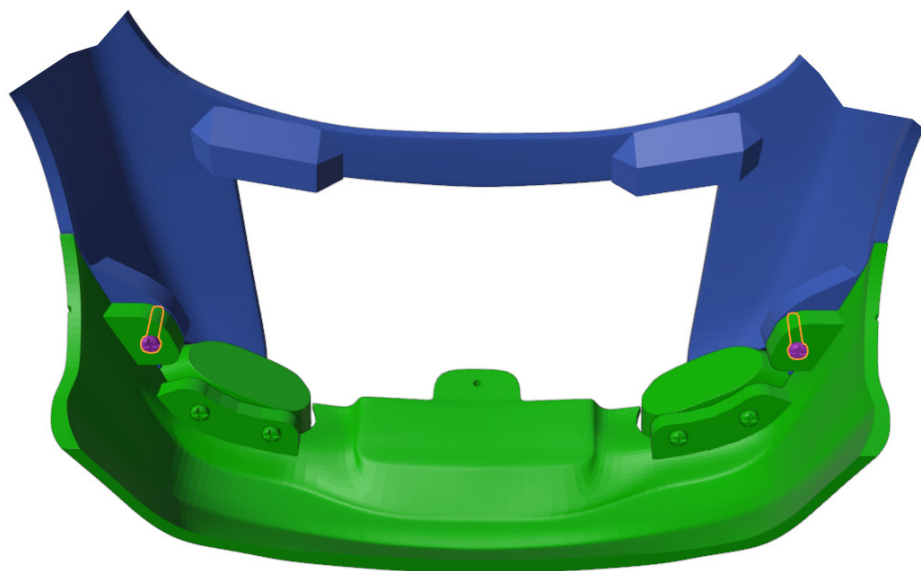
 4x M1x5

35



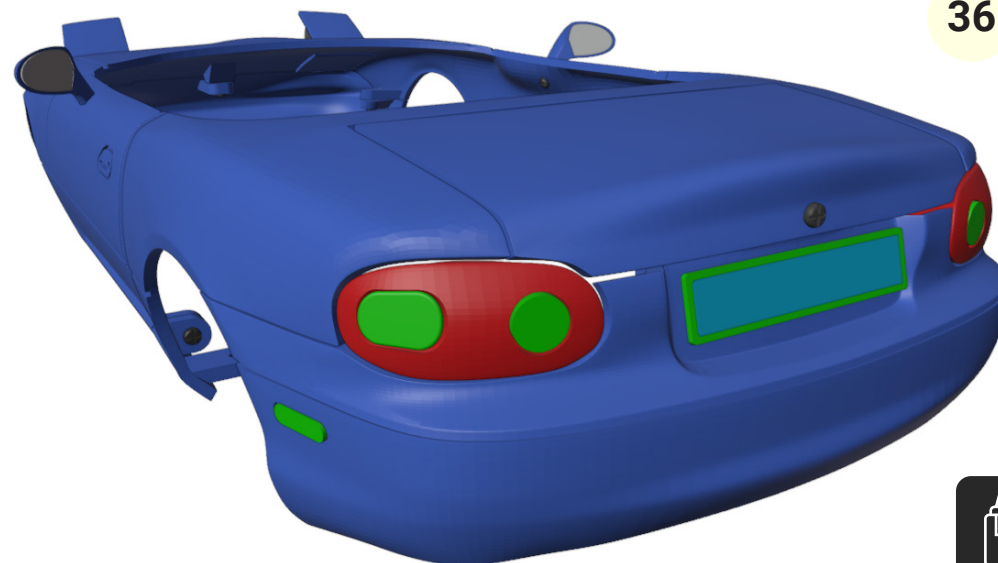
 1x M1x5

34

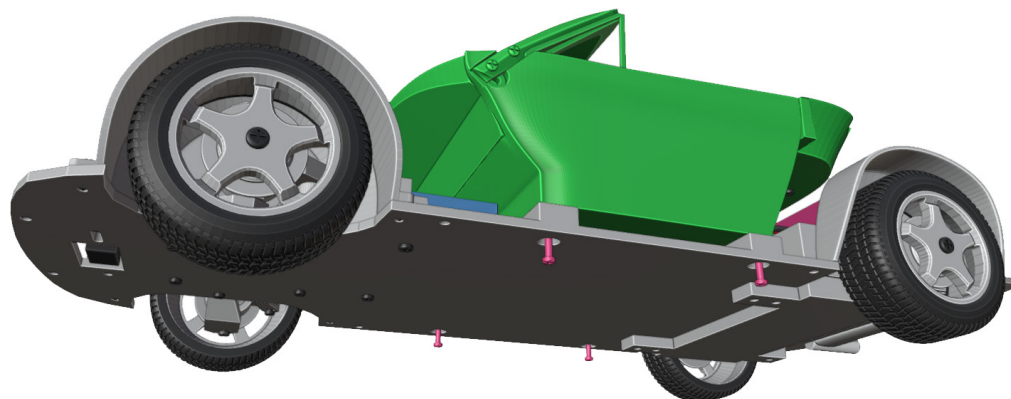


 2x M1x5

36



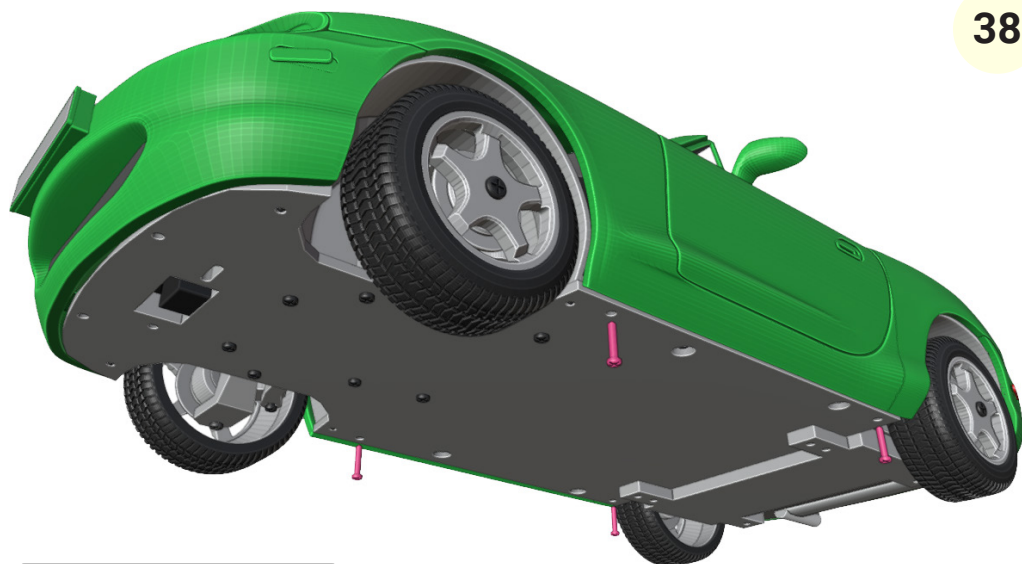
37



4x M1x5



38



4x M1x5



Great job! We are done...

Hope you enjoyed the build
and for more models, visit:

3drcmodels.com and
youtube.com/@3DRcModels

