

Soda Qapid

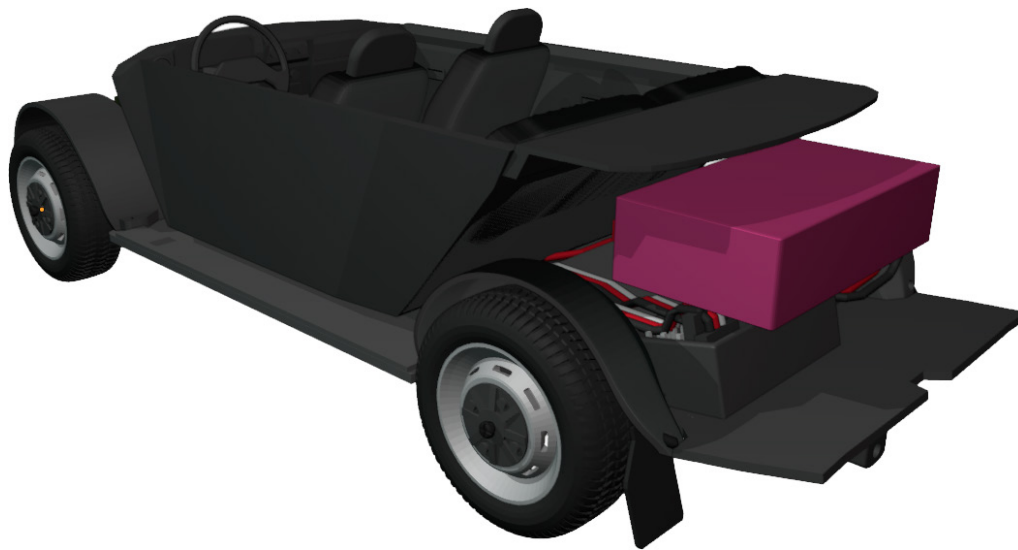
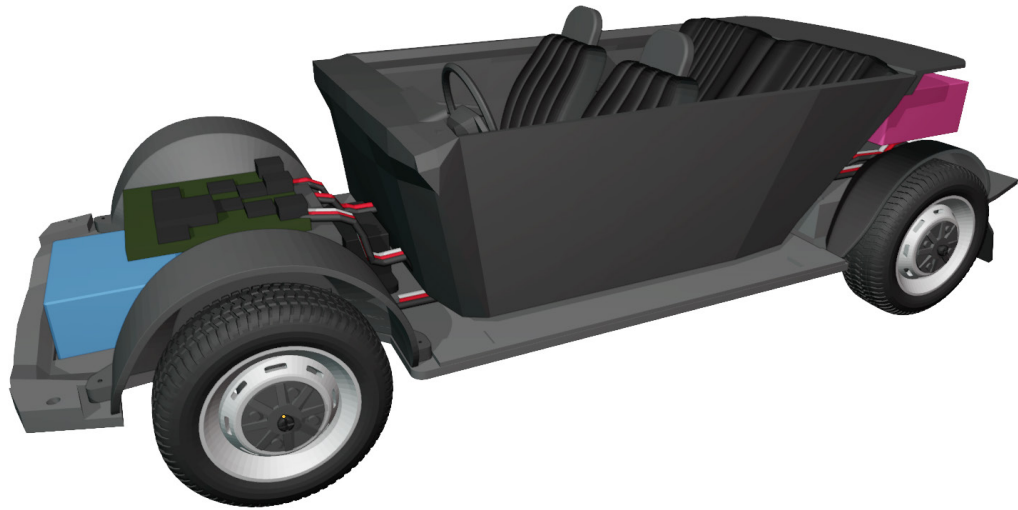
1:24 scale, fully 3D printed on FDM



More models at:

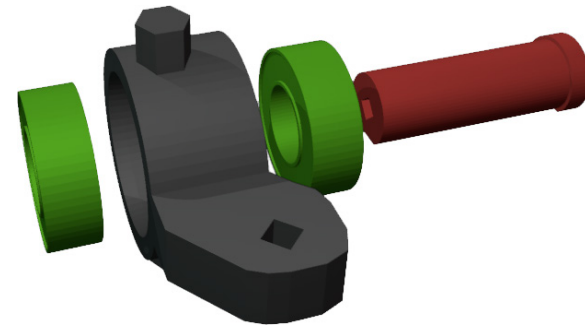
www.3drcmodels.com

1. Chassis

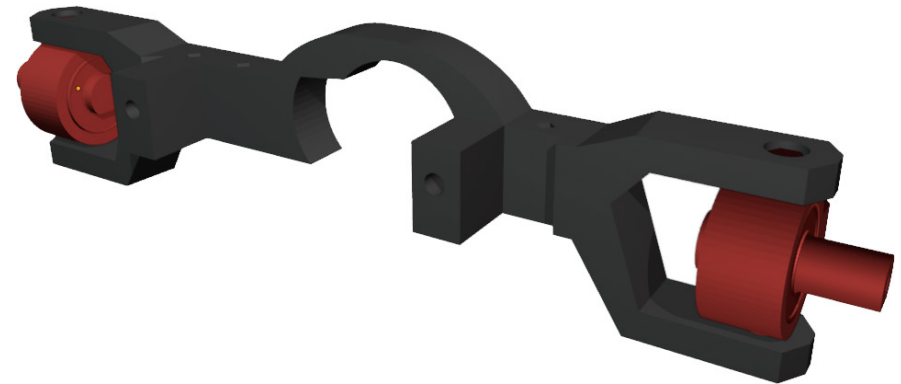


4x 3x6x2mm bearings and shaft has to fit tightly

1



2

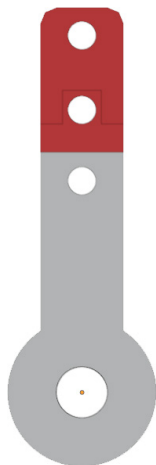


3

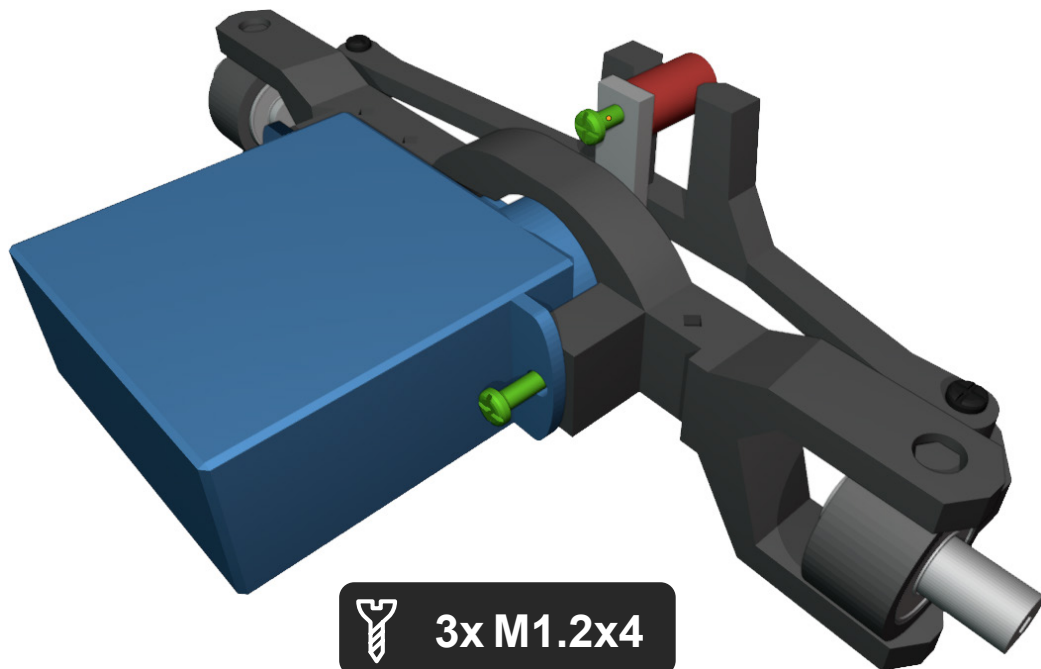


2x M1.2x4

4



You need to cut red part of steering pin so it fits under cover.

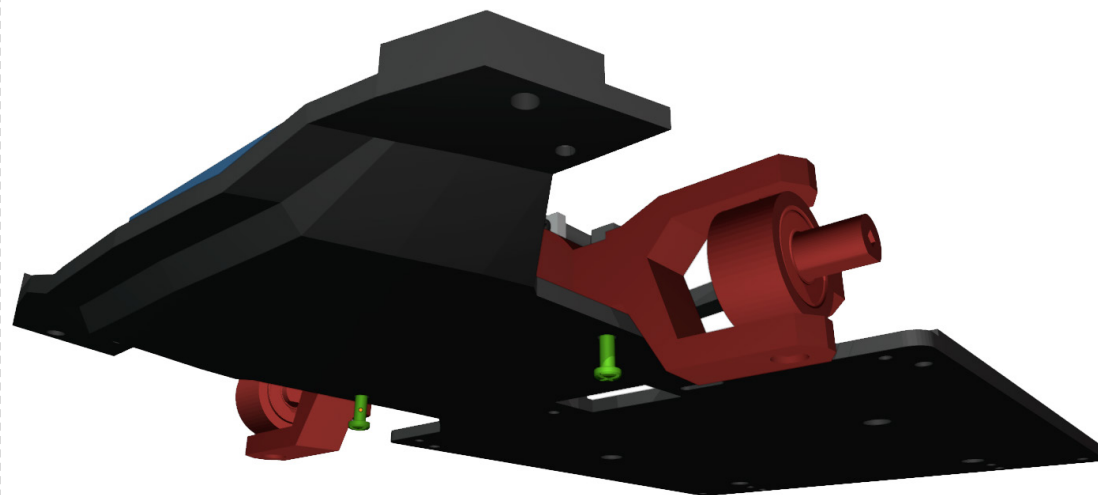


3x M1.2x4

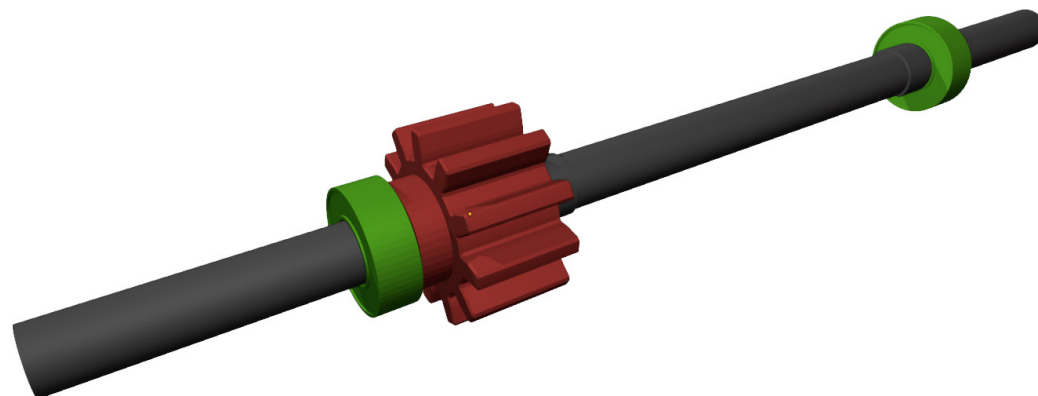
5



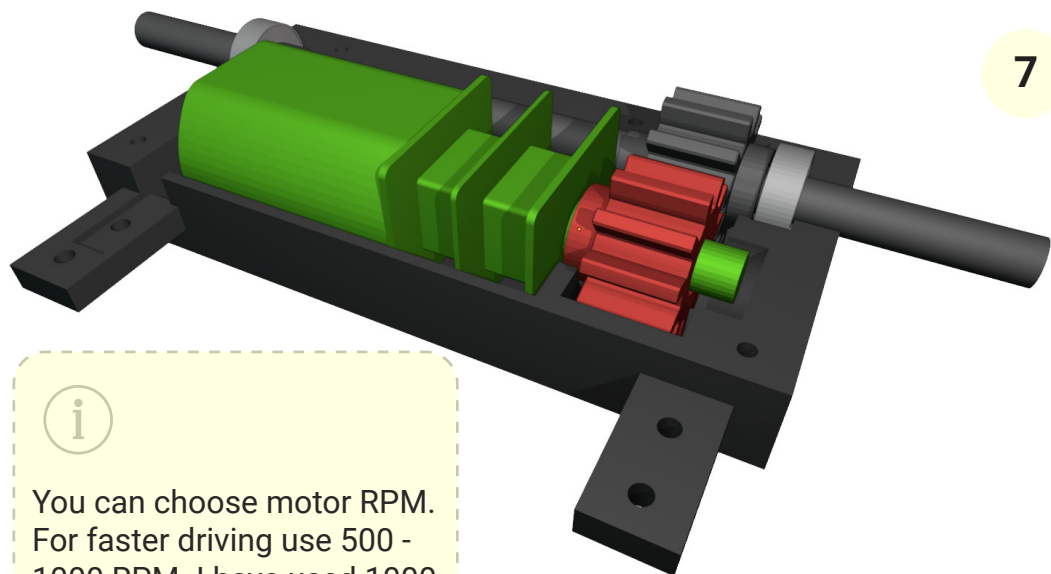
2x M1.2x5



6



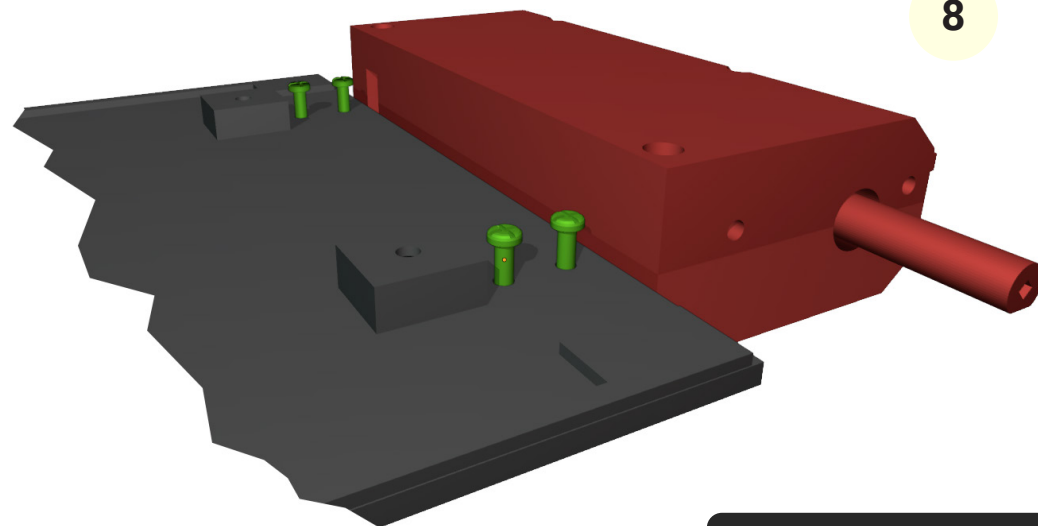
4x 3x6x2mm bearings and gear has to fit tightly



7



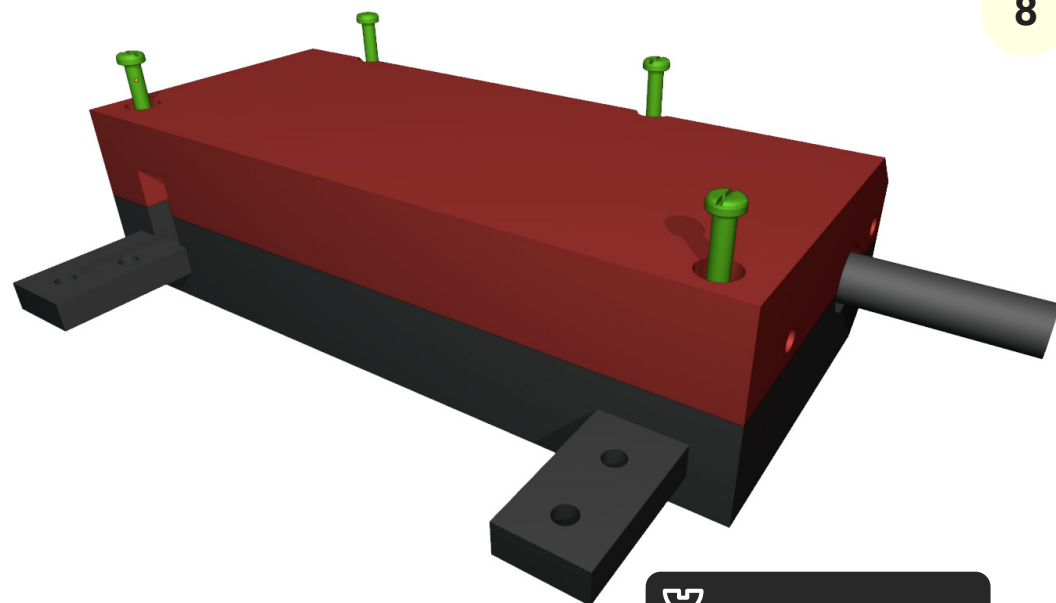
You can choose motor RPM.
For faster driving use 500 -
1000 RPM. I have used 1000
RPM.



8



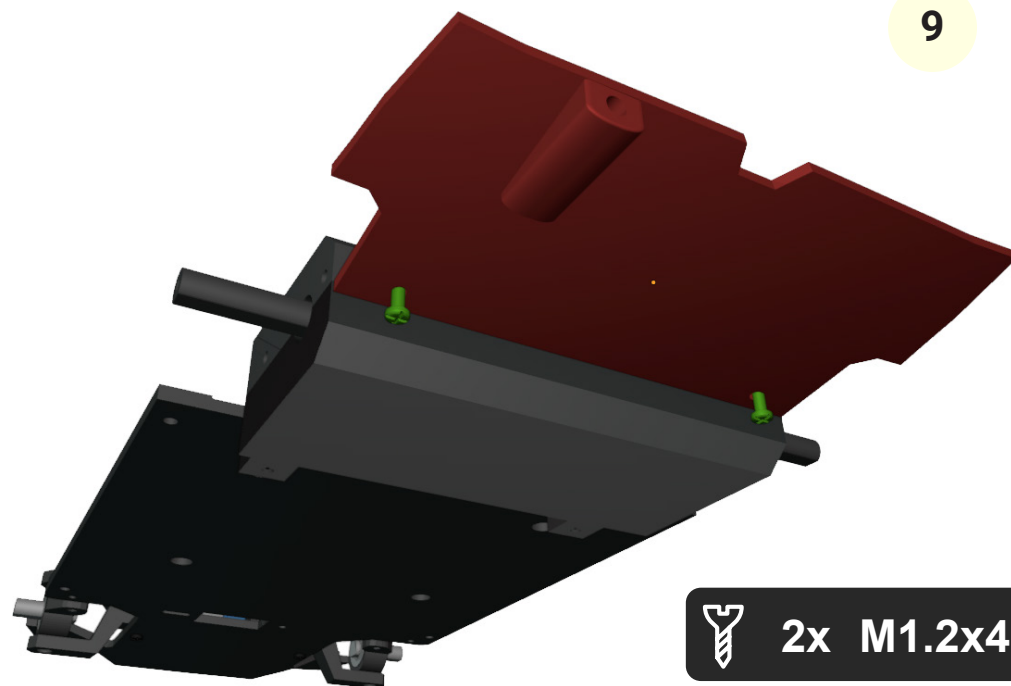
4x M1.2x4



8



4x M1x4

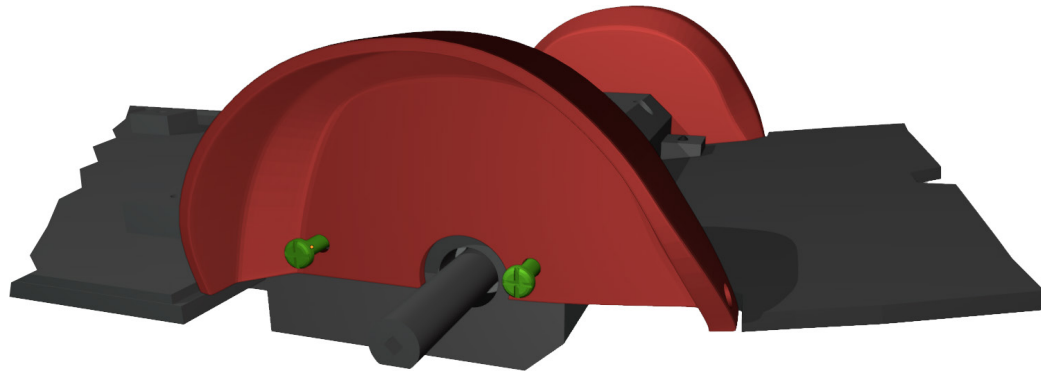


9



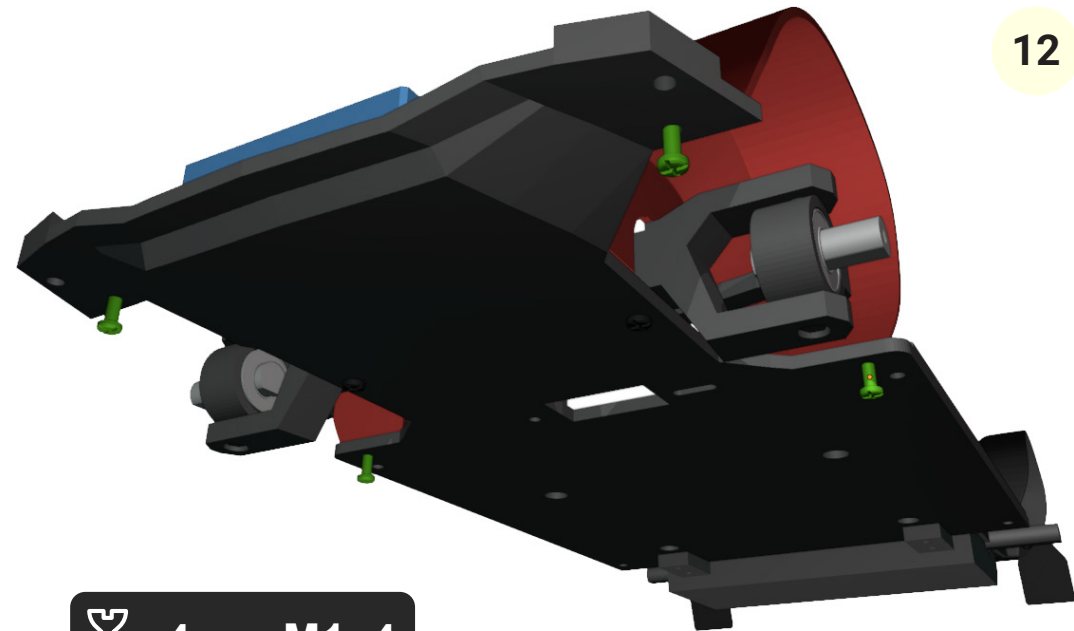
2x M1.2x4

10



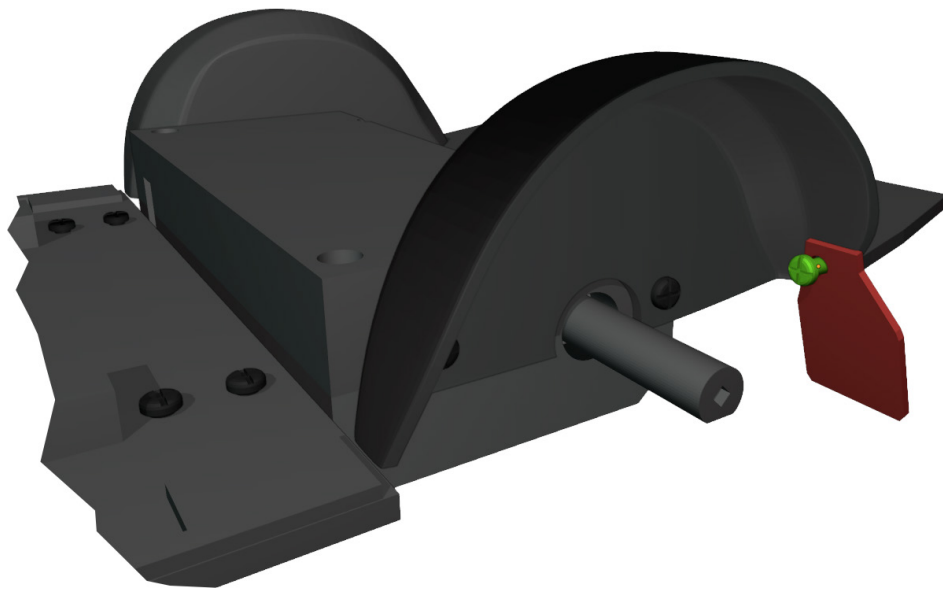
4x M1.2x3

12



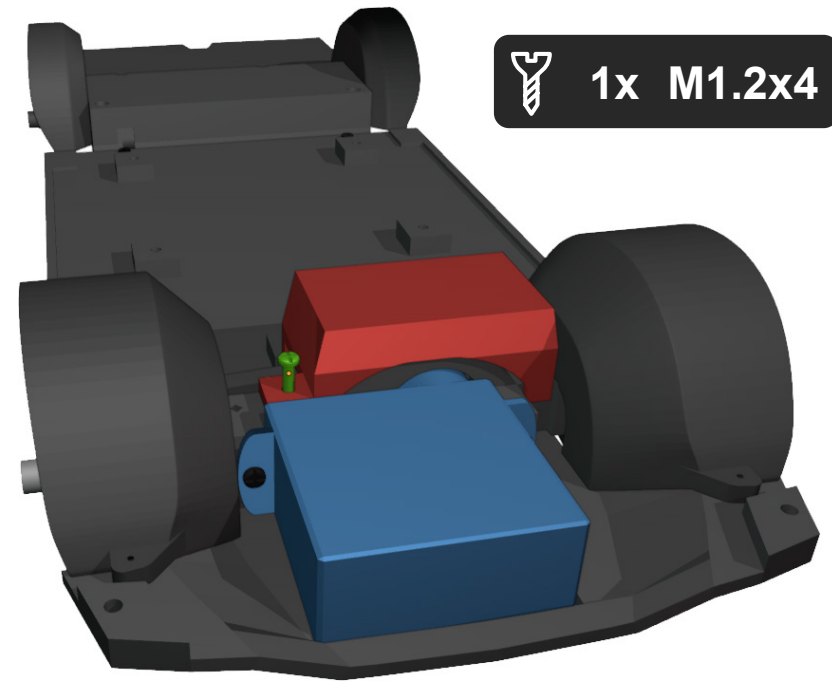
4x M1x4

11

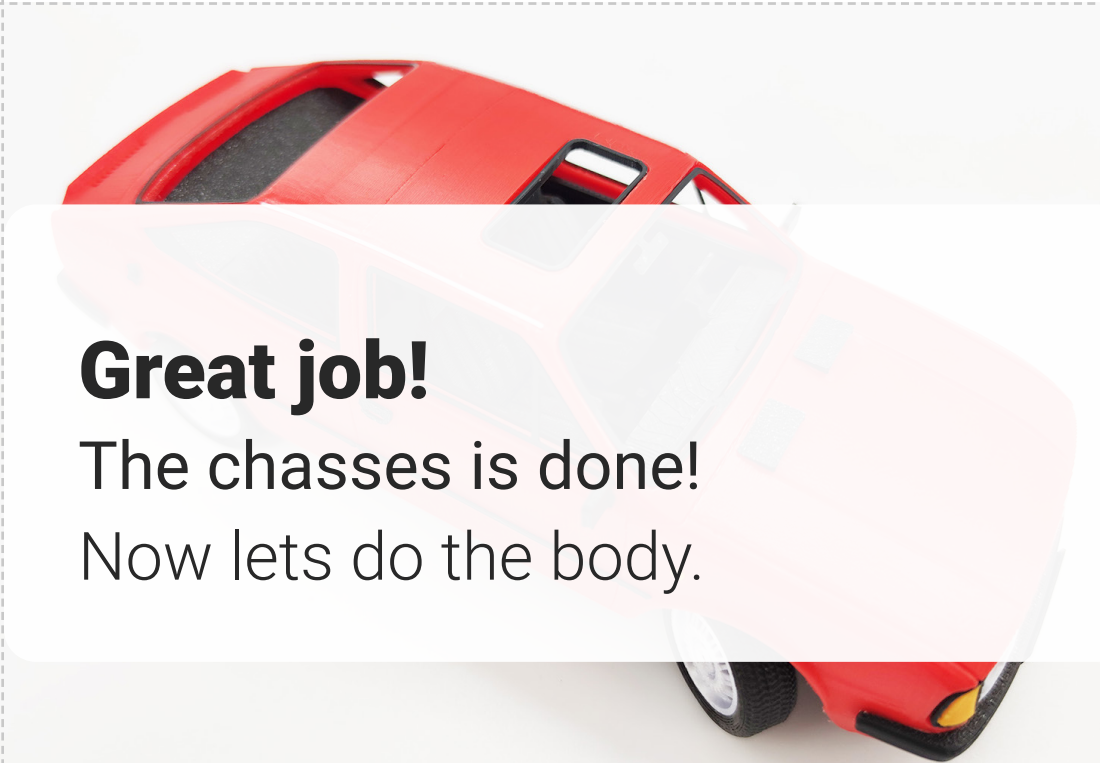
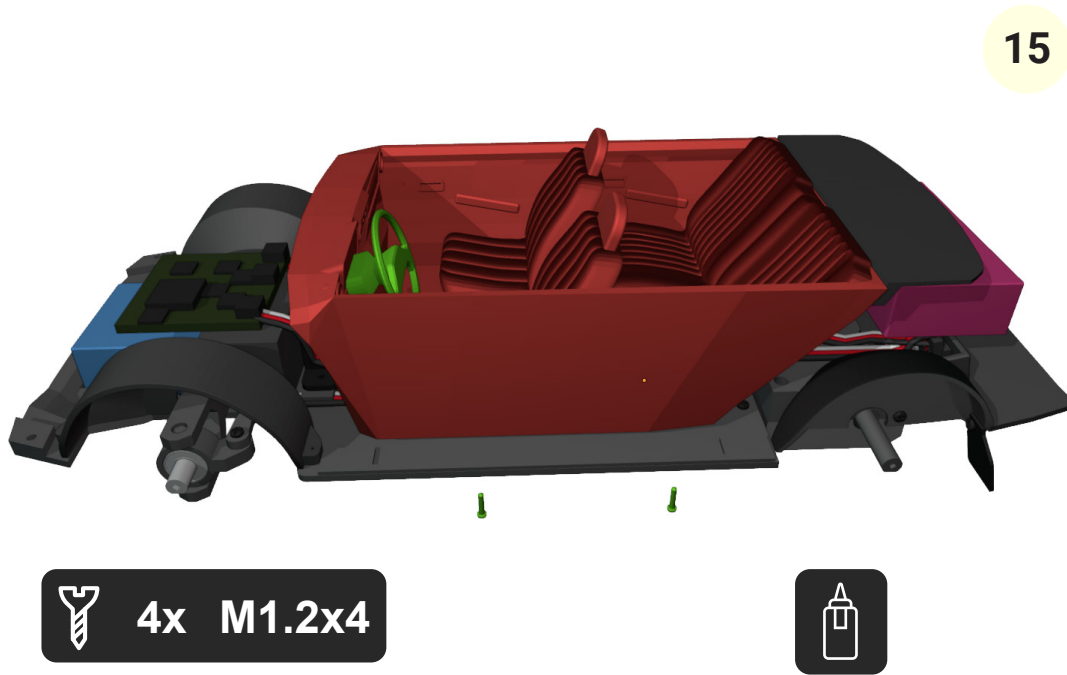
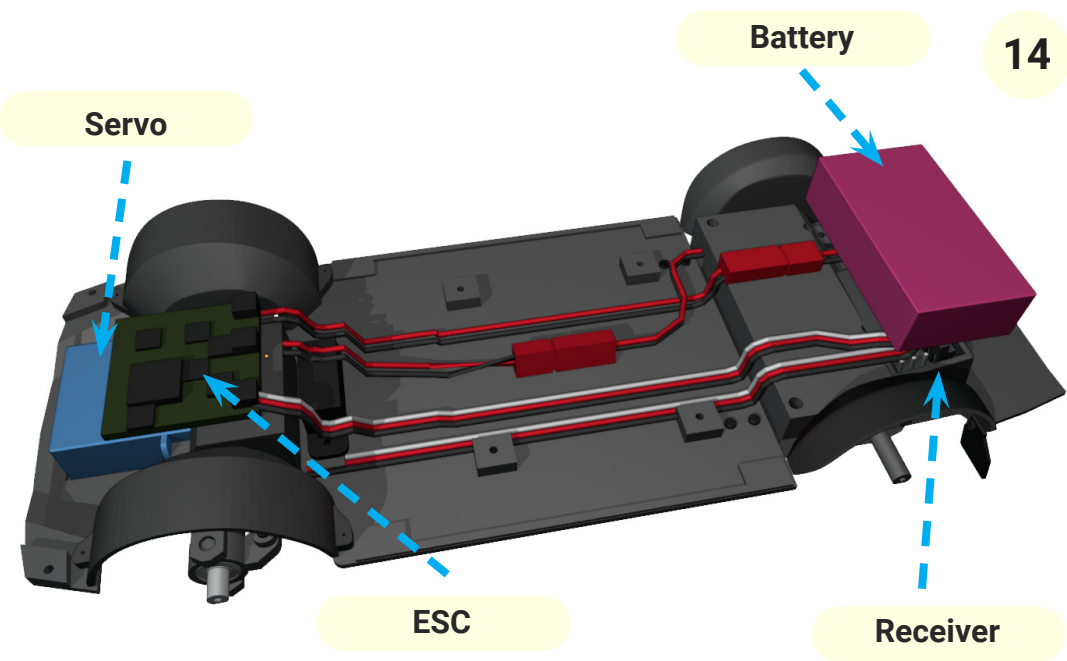


2x M1.2x3

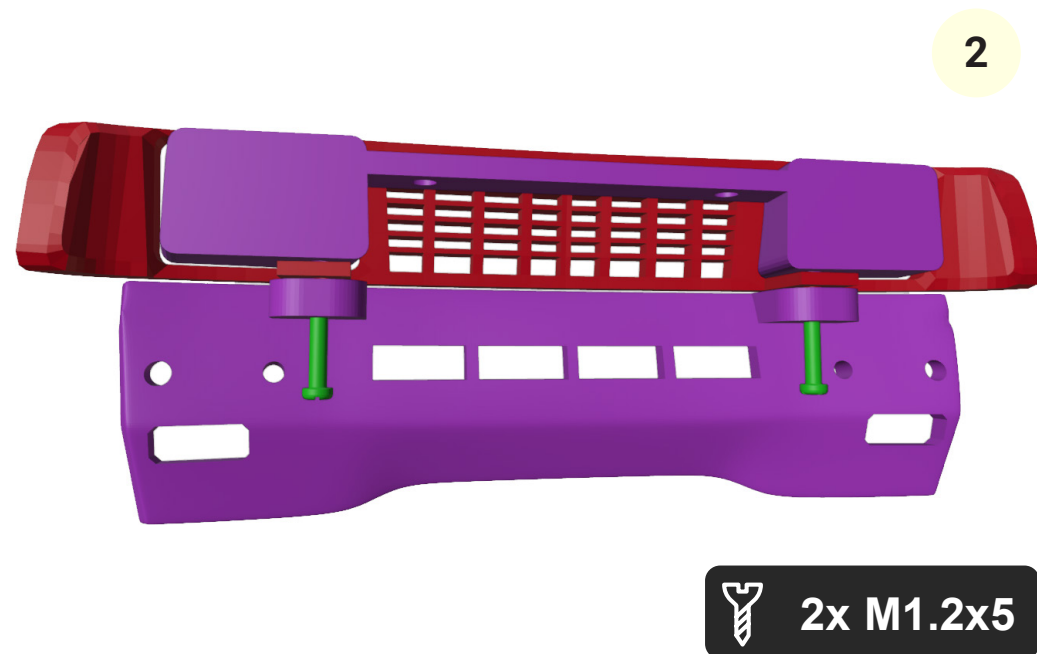
13



1x M1.2x4



2. Body

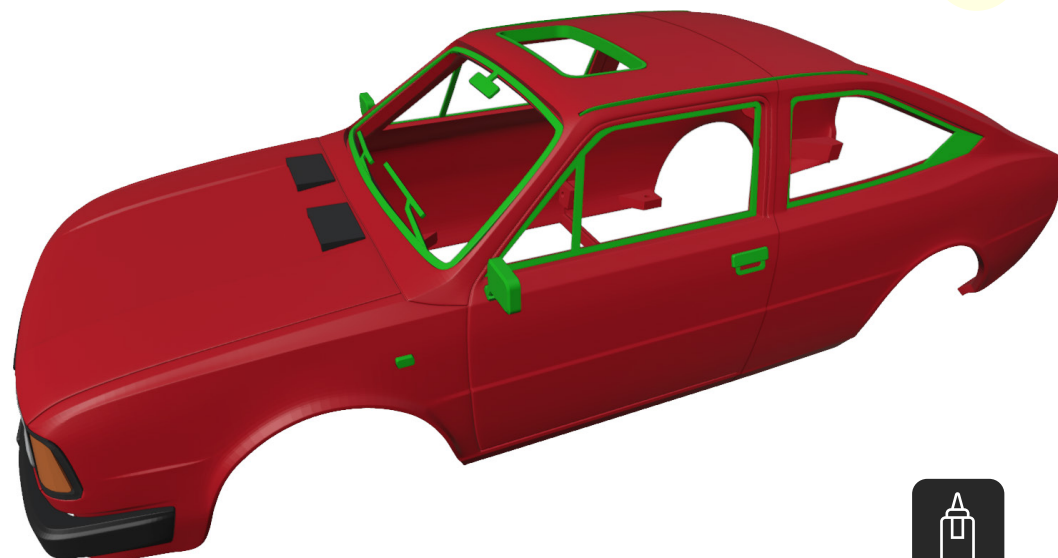




3



2x M1.2x5



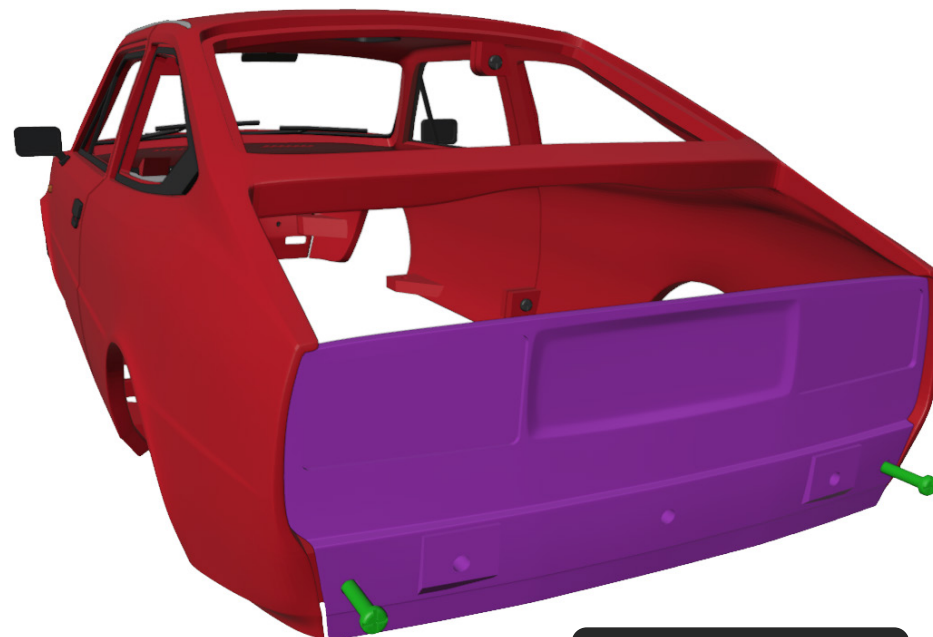
5



4



2x M1.2x5



6



2x M1.2x5



Great job! We are done...
Hope you enjoyed the build
and for more models, visit:
3drcmodels.com and
youtube.com/@3DRcModels