

# Oktáva 2 FL

1:24 scale, fully 3D printed on FDM



More models at:

**[www.3drcmodels.com](http://www.3drcmodels.com)**

# Non printed parts

## Screws

**M1.2 x 5mm**

**M1.2 x 4mm**

**M1 x 4mm**



## Bearings

**6x 3x6x2**



**2x 5x8x3**



*\* If you DONT want to build car as RC, you don't need any bearings*

## RC electronic *\* Optional if you want to have it as RC*



**2S ESC**

*\* No fancy ESC required.*



**1x 6V DC Motor**

*\* cca 1000 RPM*



**2S Lipo battery**

*\* Around 400mah is more than enough.*



**RC Set**

*\* Just basic RC set will do the job*

# Prologue

## Thank you

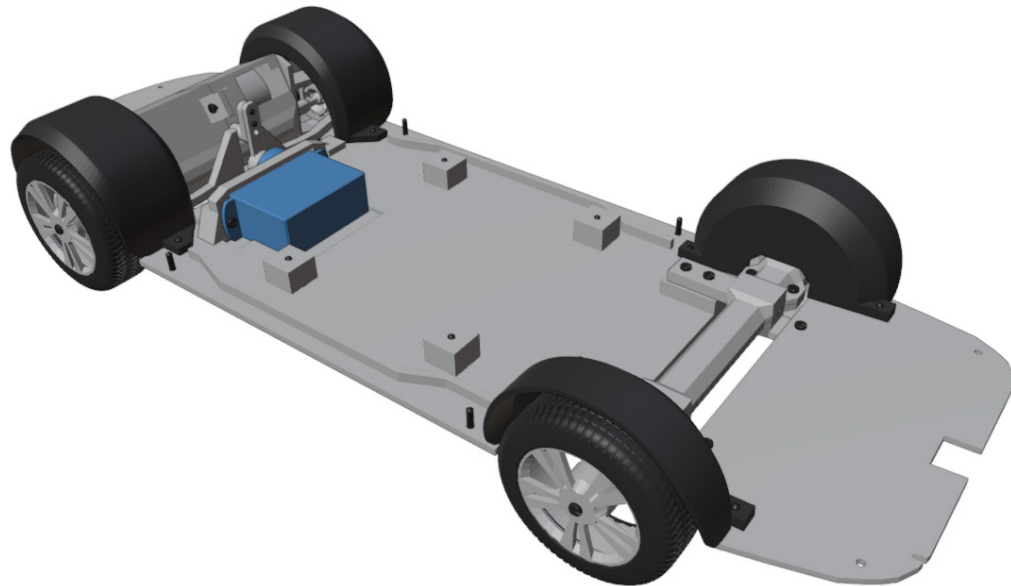
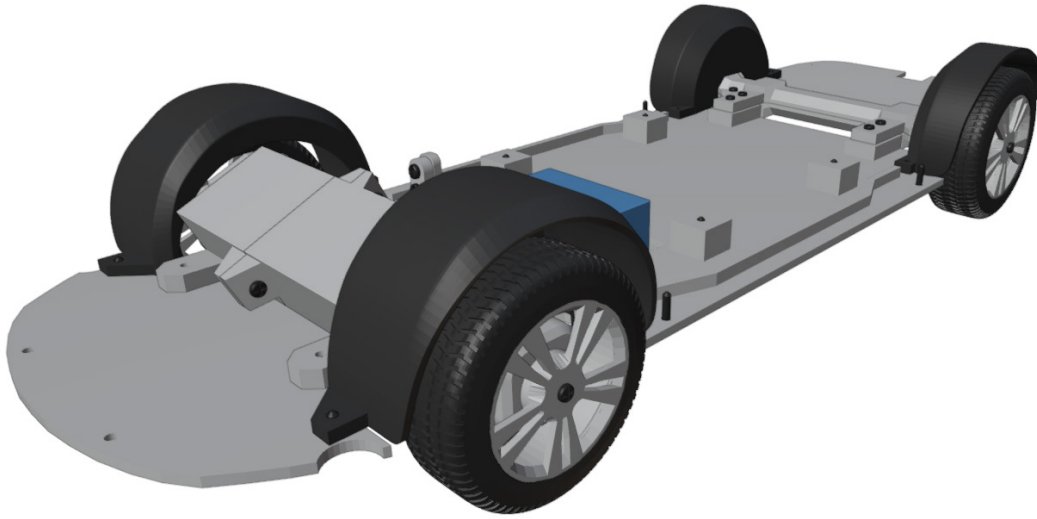
Thank you for supporting my hobby by buying this model. I had great time designing this kit and I hope you will have same building it and playing with it. Thanks small scale, it's very easy, cheap and quick to print and build.

More models can be found at  
[www.3drcmodels.com](http://www.3drcmodels.com)

## Warning!

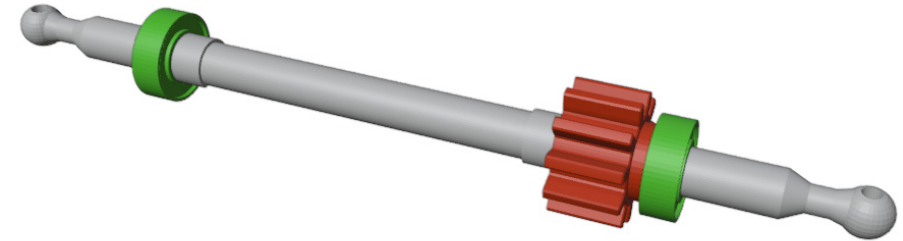
Please be careful! Kit contain lots of small parts that can be swallow by infant. Event after build is finished, small parts can be ripped off and can be dangerous. I don't recommend giving this toy to kid younger 3 years.

# 1. Chassis

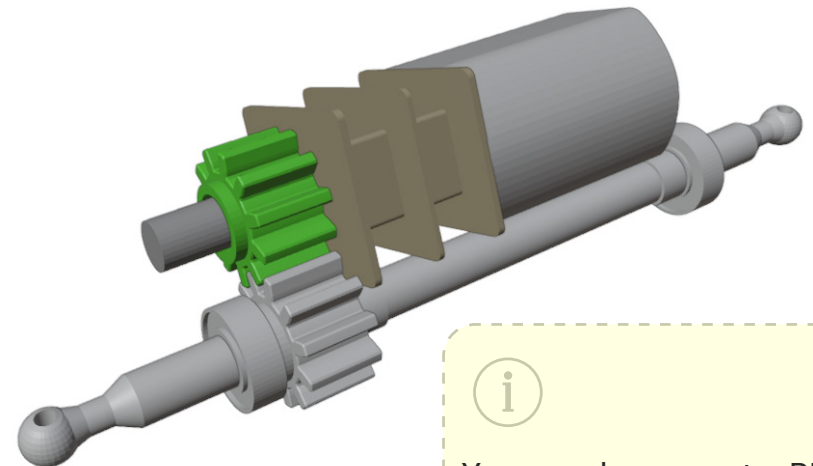


2x 3x6x2mm bearings and shaft has to fit tightly

1

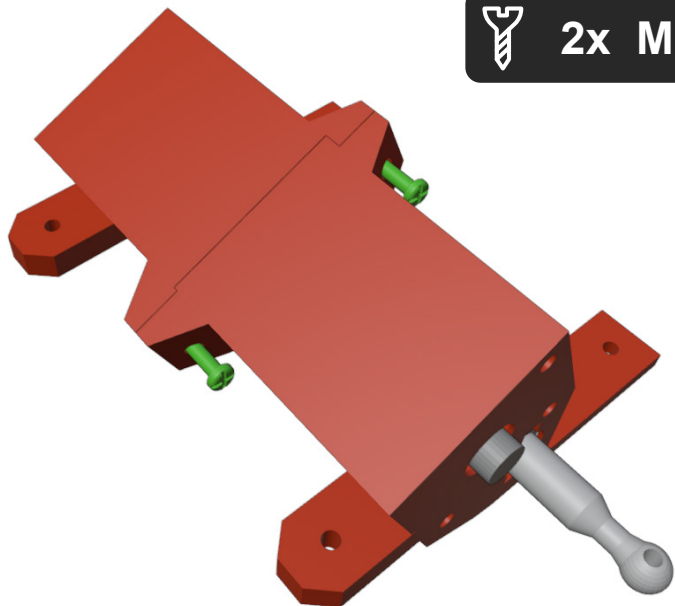


2



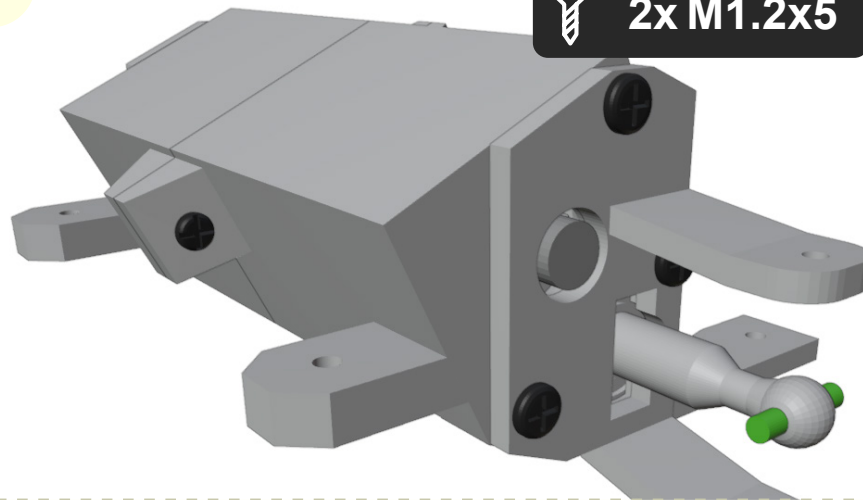
You can choose motor RPM. For faster driving use 500 - 1000 RPM. I have used 1000 RPM.

3



2x M1.2x5

5

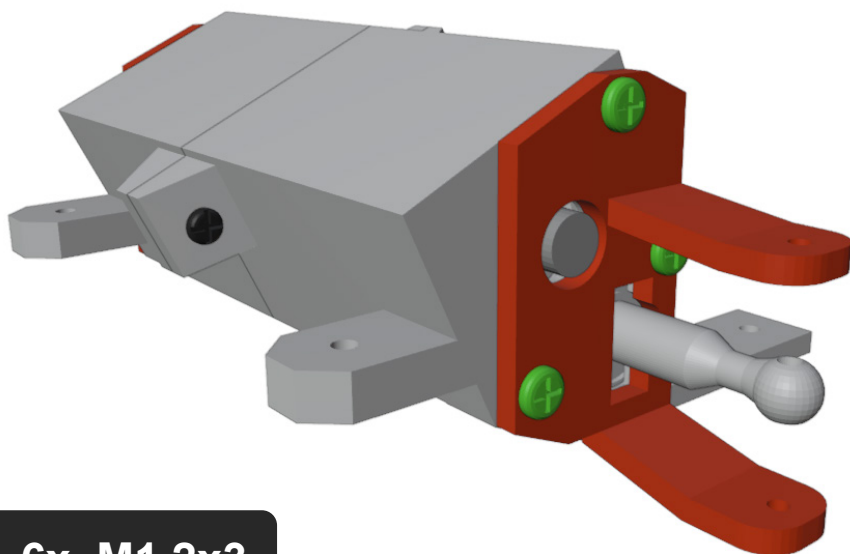


2x M1.2x5



You need 2x 4mm long ~1.1mm thin wire (Best are paper clips.)

4

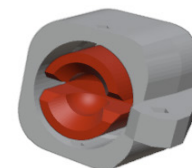
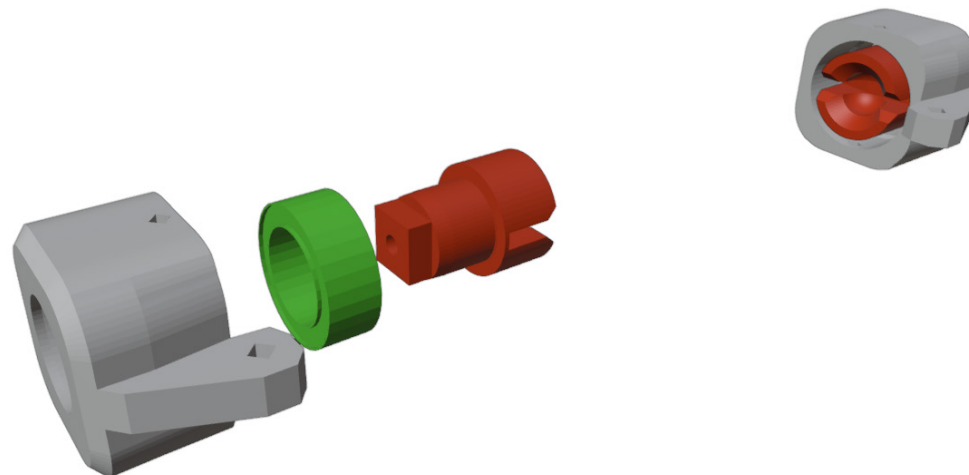


6x M1.2x3

6



2x 5x8x3mm bearings and shaft has to fit tightly

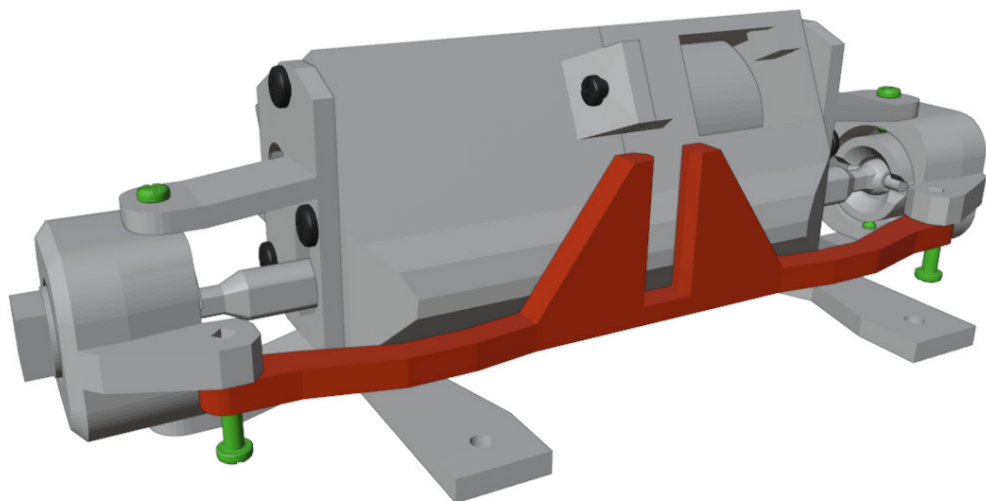






6x M1.2x4

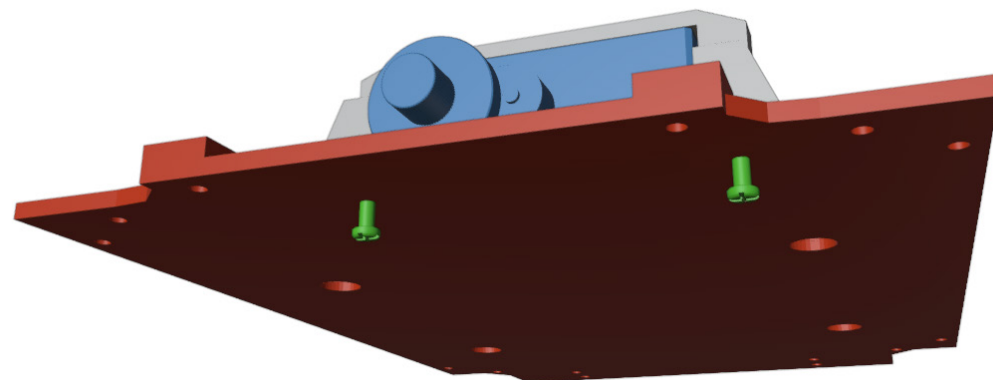
7



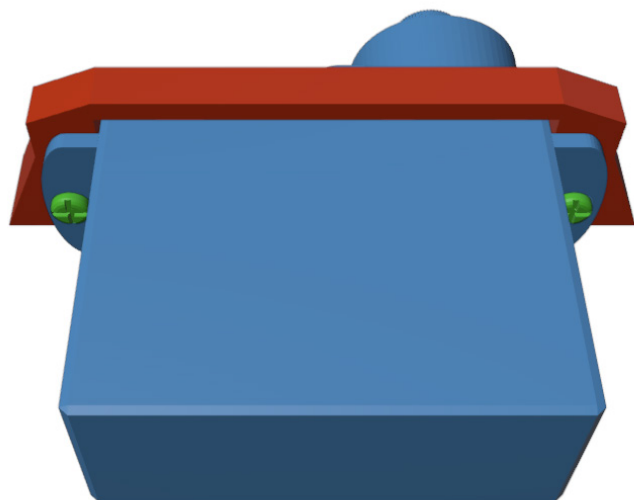
8



2x M1.2x4



8

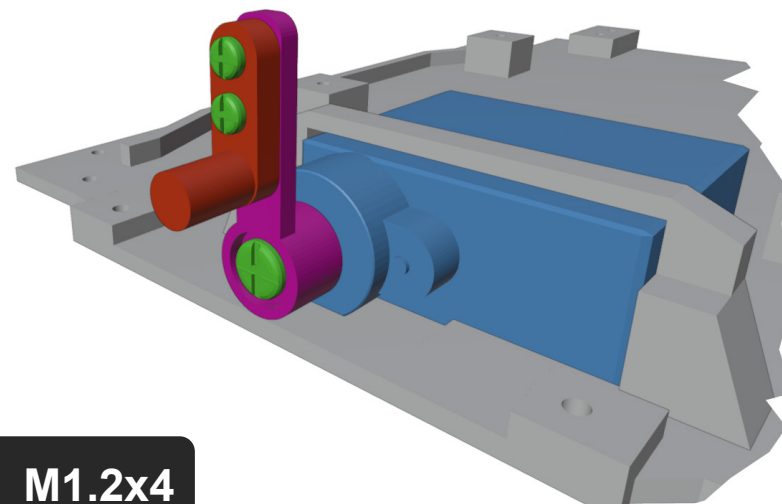


2x M1.2x4

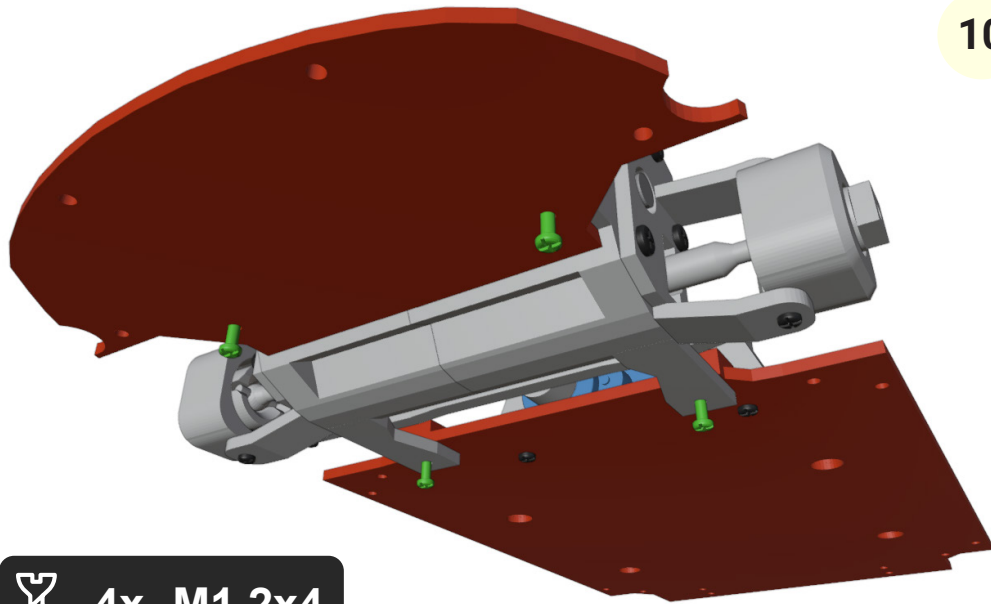
9



2x M1.2x4

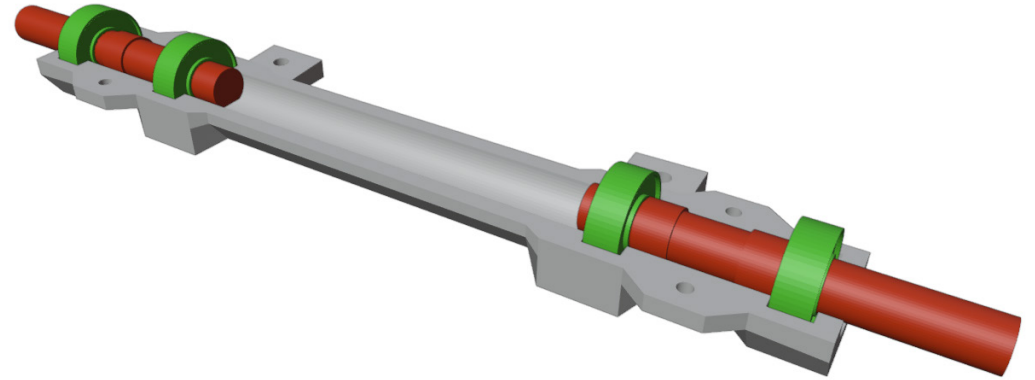


10



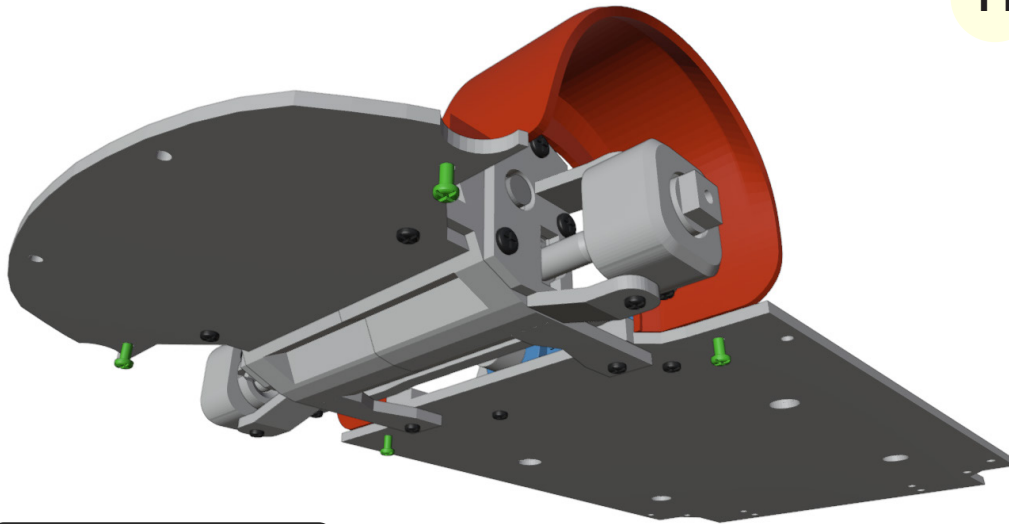
4x M1.2x4

12



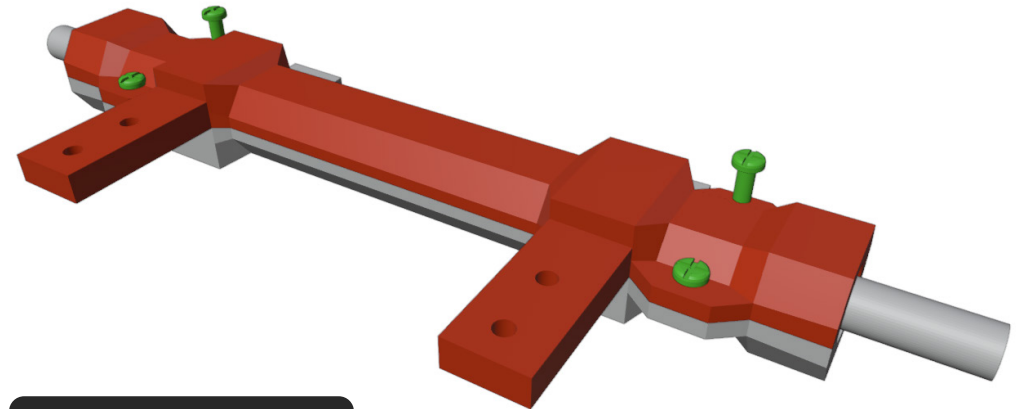
4x 3x6x2mm bearings and shaft has to fit tightly

11



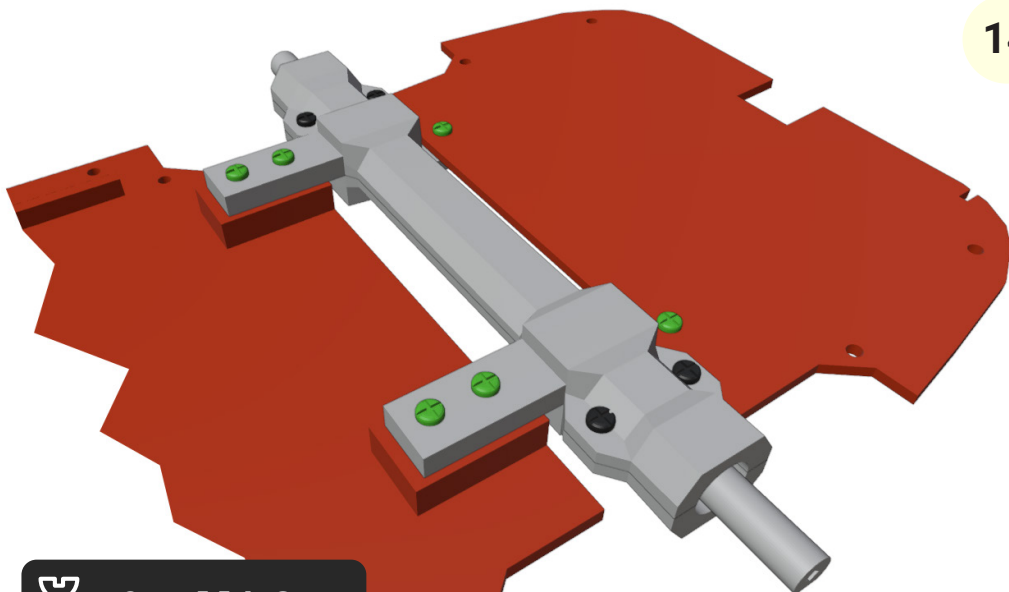
4x M1.2x4

13



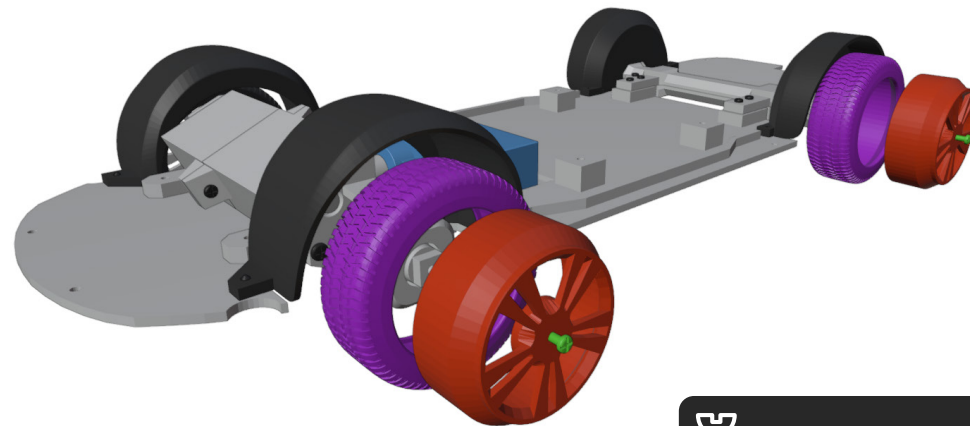
4x M1.2x4

14



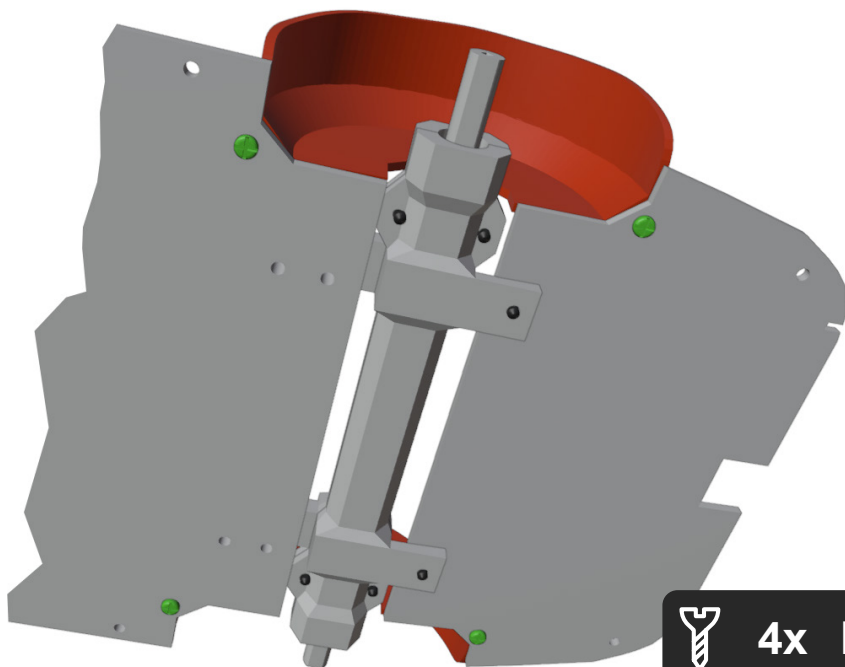
6x M1.2x4

16



4x M1.2x4

15

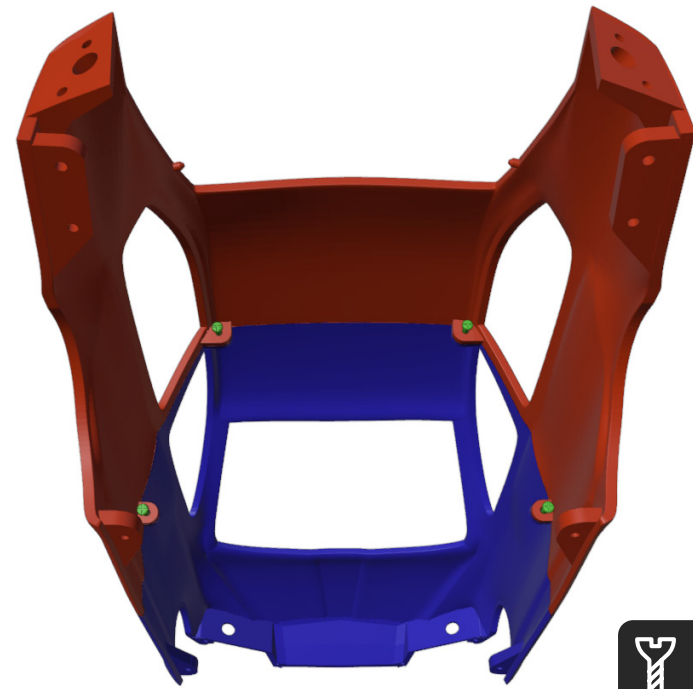


4x M1.2x4

# Great job!

The chassis is done!  
Now let's do the body.

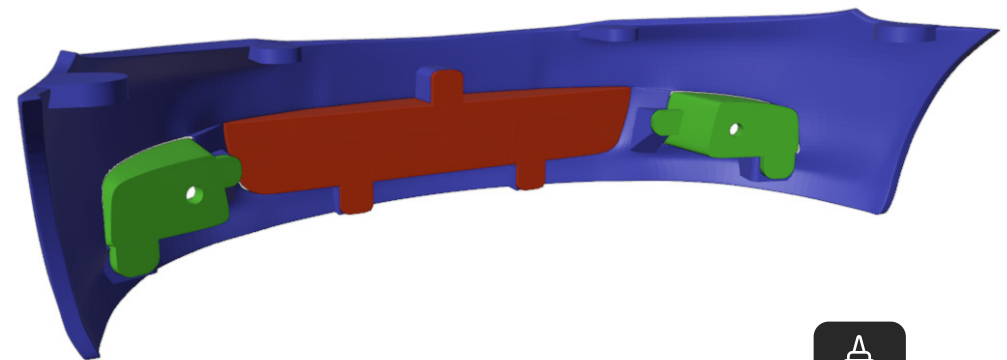
## 2. Body



1



4x M1.2x5

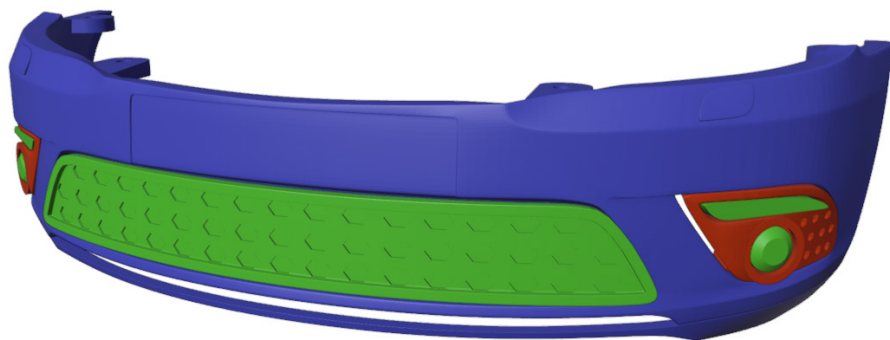


2





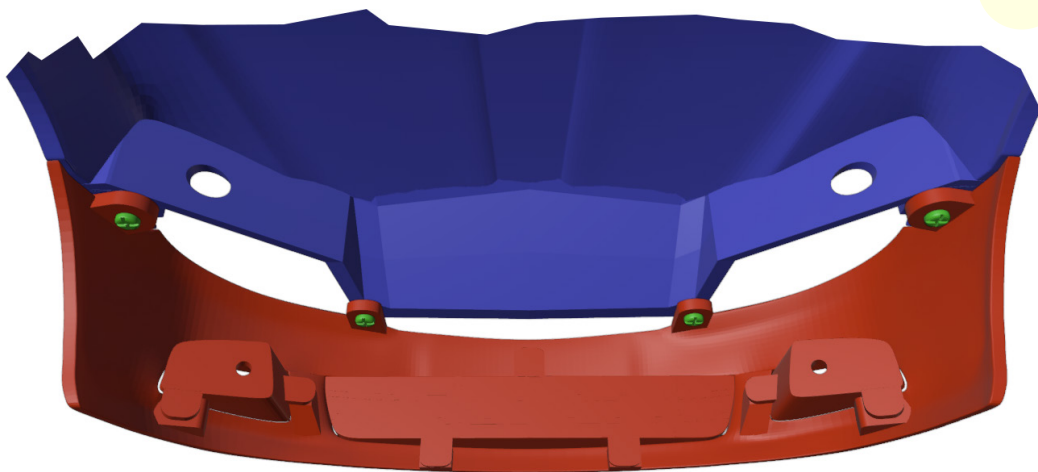
3



5

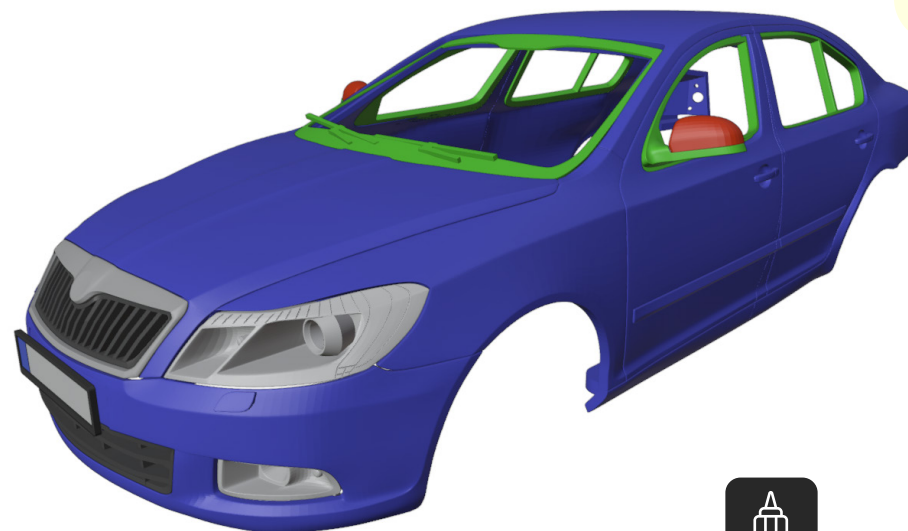


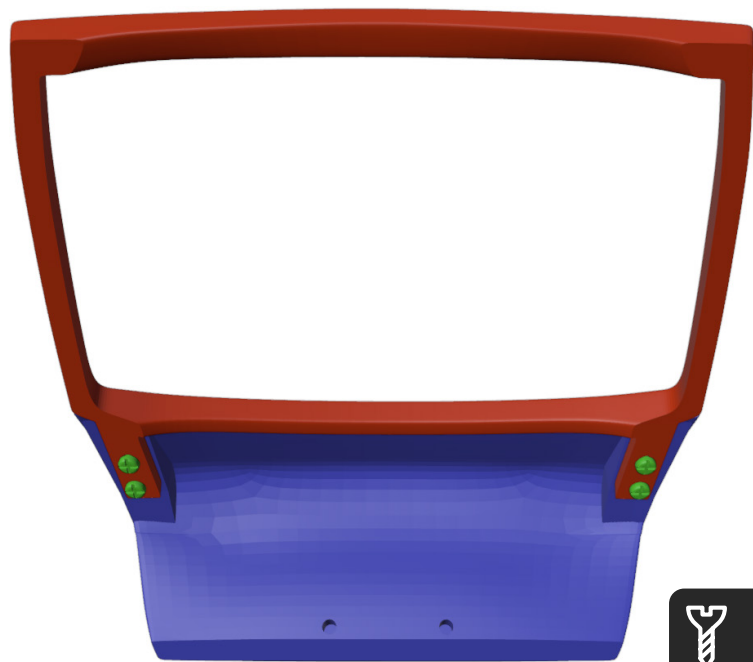
4



4x M1.2x4

6

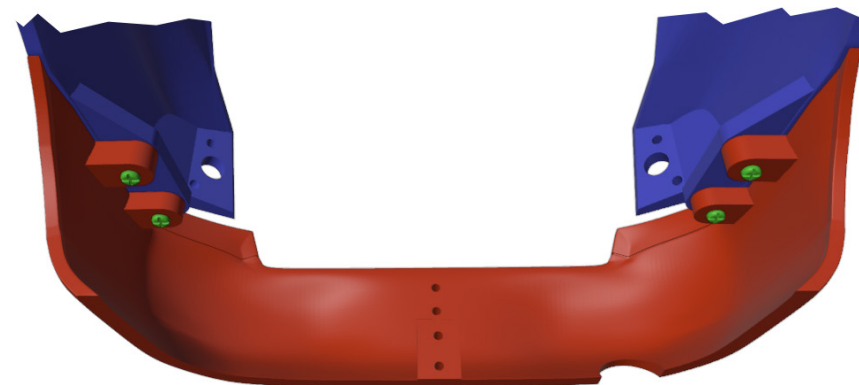




7



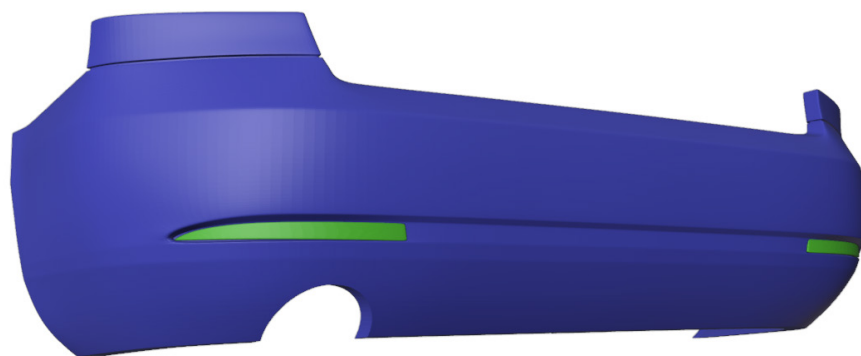
4x M1.2x5



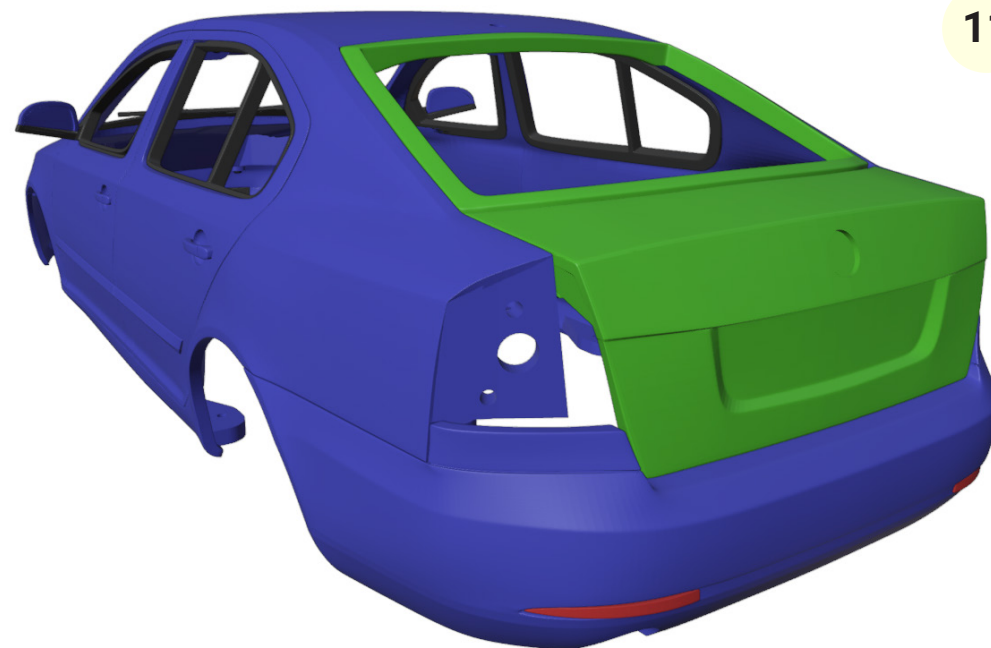
10



4x M1.2x5

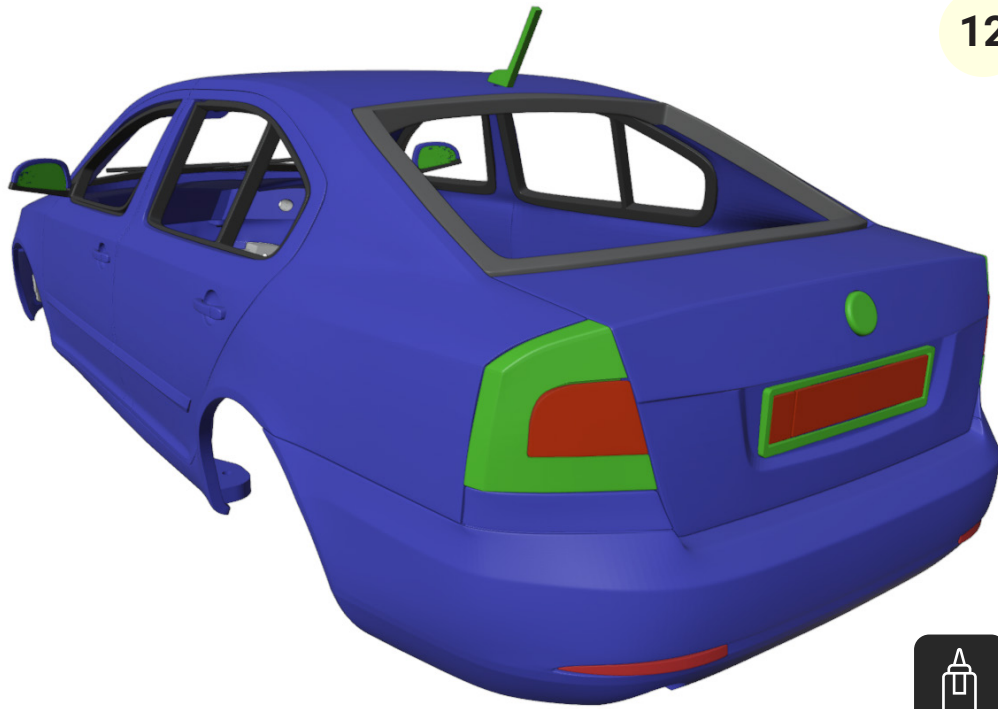


9

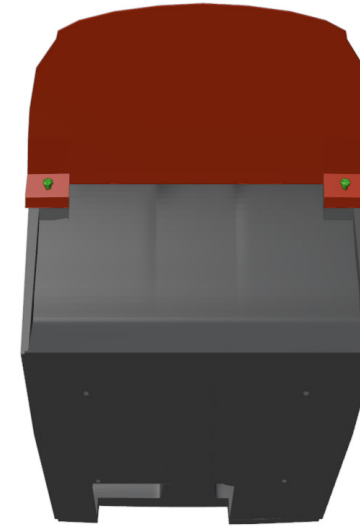


11

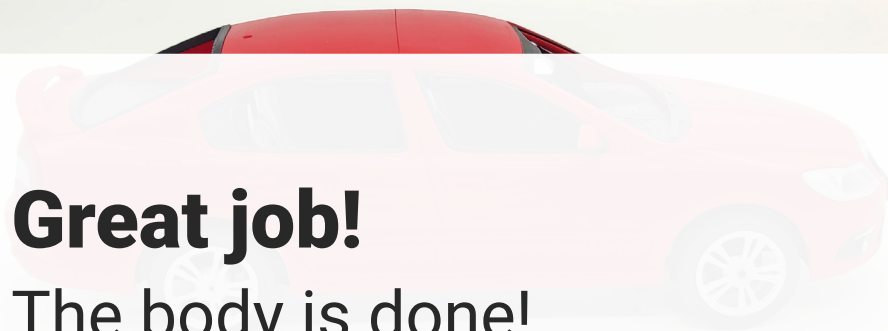
12



## 3. Interior

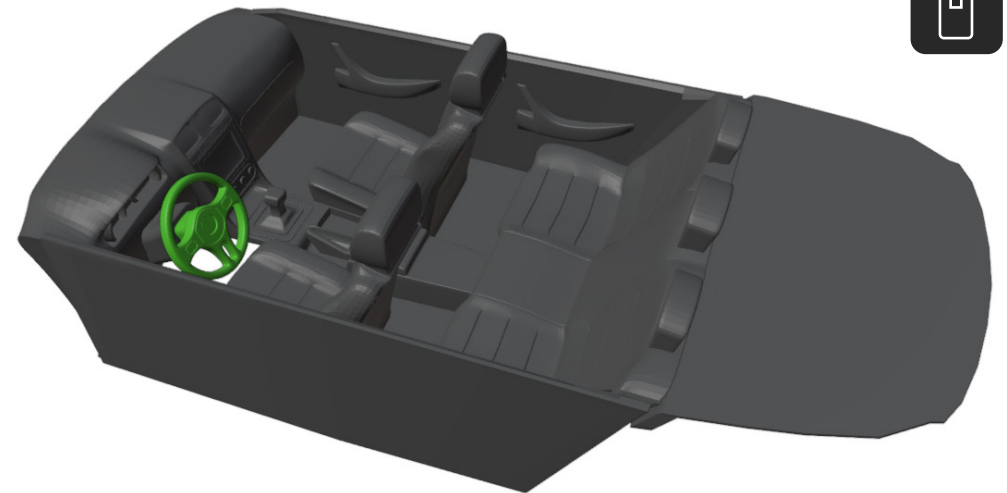


2x M1.2x4



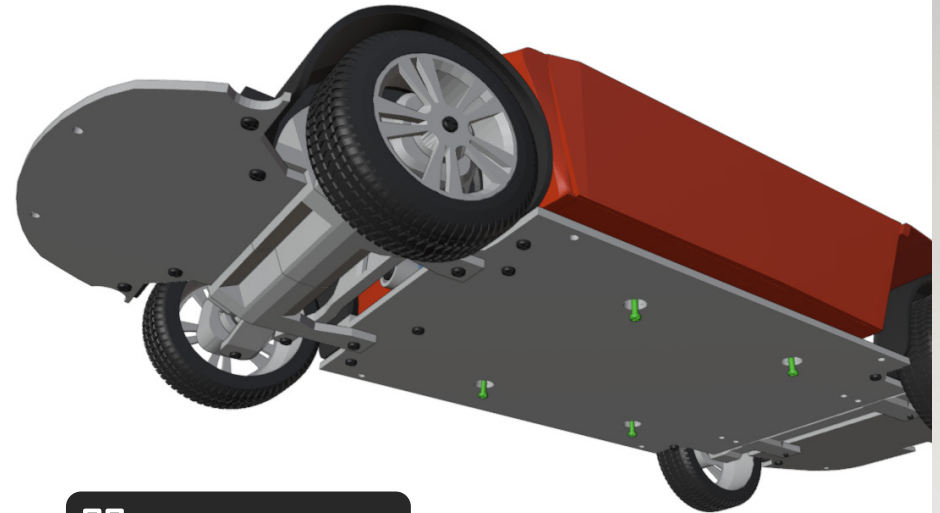
**Great job!**

The body is done!  
Now lets do interior.

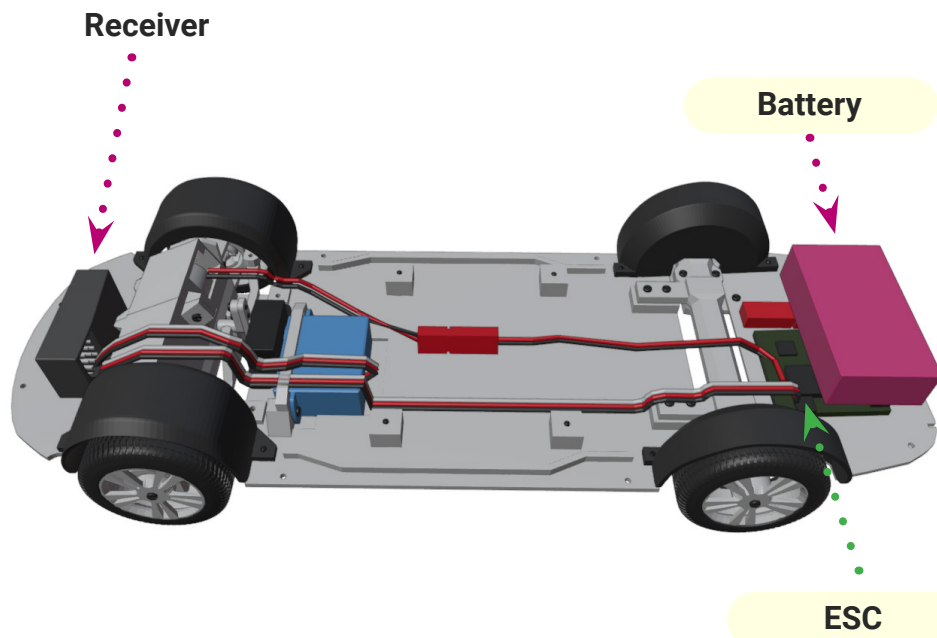


**Great job!**

We are almost done  
Now lets complete the car.



 2x M1.2x4



 2x M1.2x4





**Great job!**

We are done...

For more models, visit:

**[www.3drcmodels.com](http://www.3drcmodels.com)**