

# Soda Garde

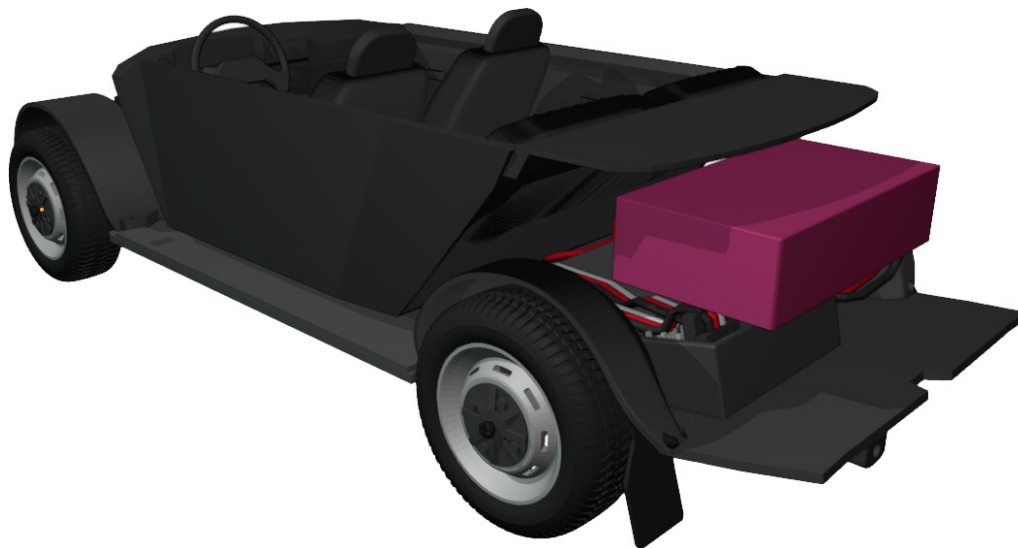
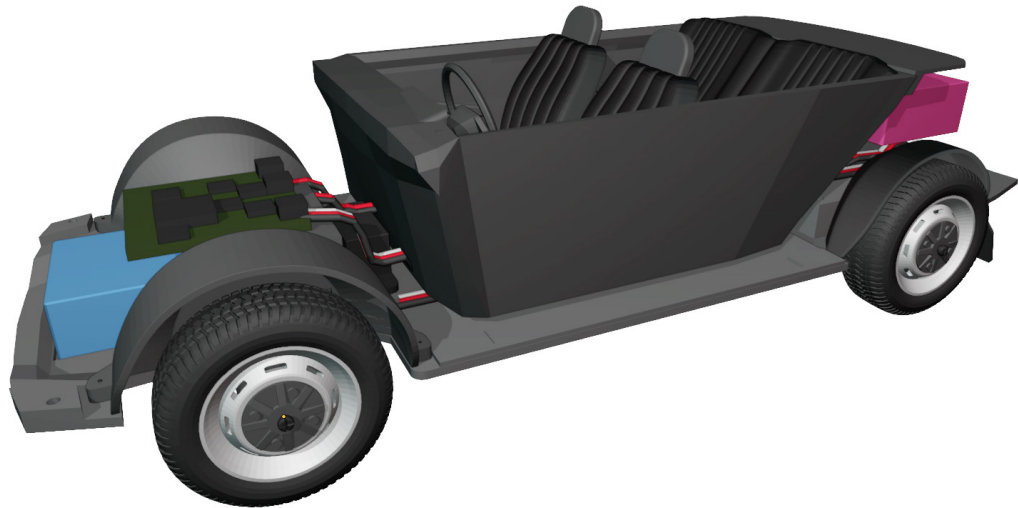
1:24 scale, fully 3D printed on FDM



More models at:

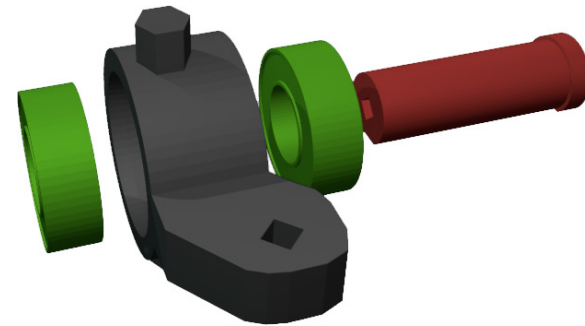
**[www.3drcmodels.com](http://www.3drcmodels.com)**

# 1. Chassis

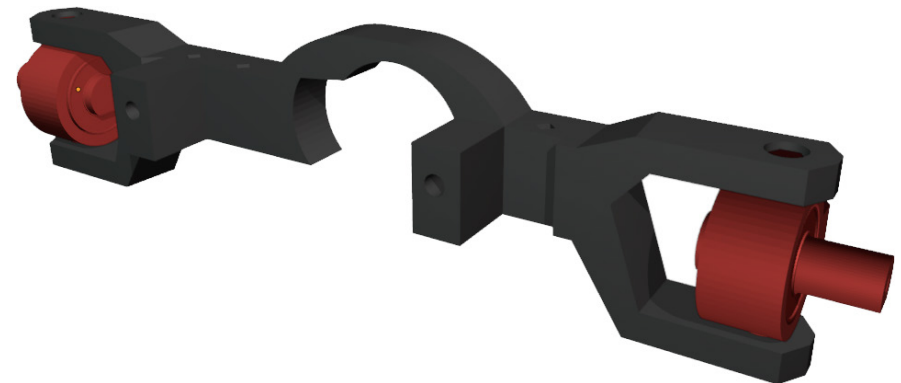


4x 3x6x2mm bearings and shaft has to fit tightly

1



2

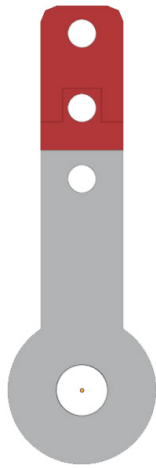


3

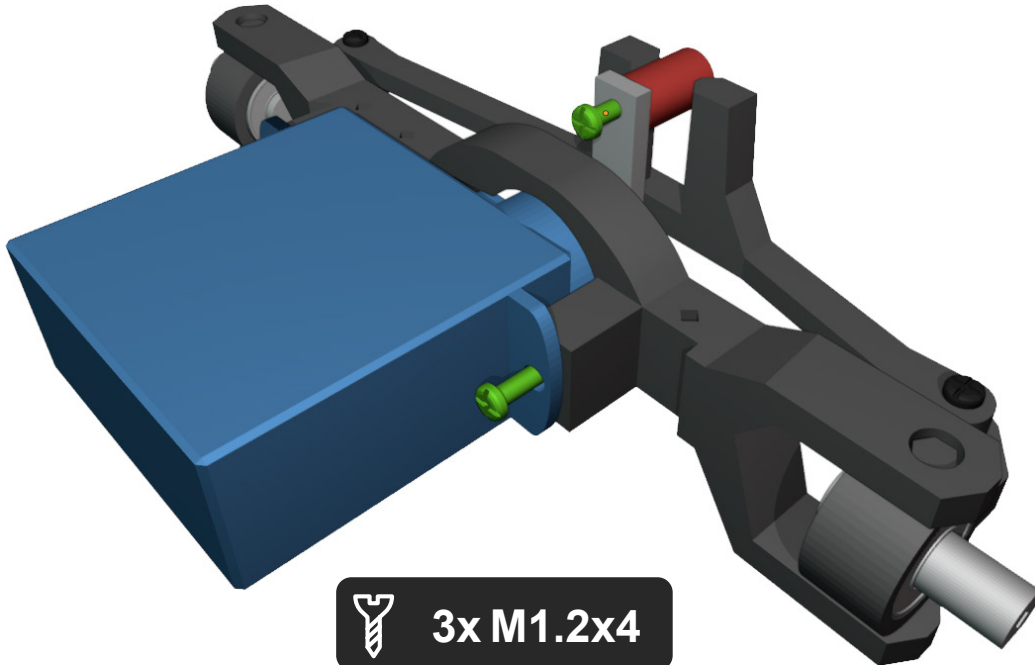


2x M1.2x4

4



You need to cut red part of steering pin so it fits under cover.

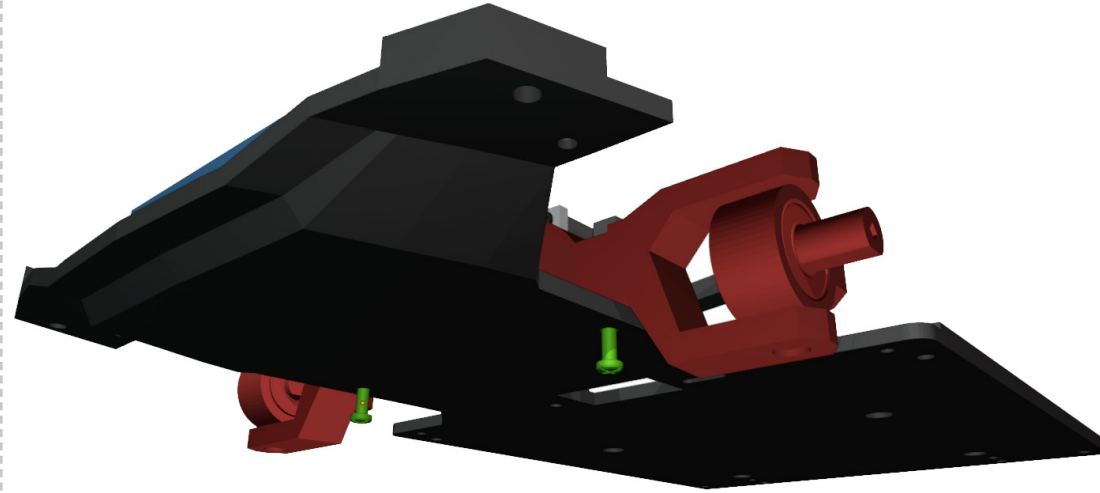


3x M1.2x4

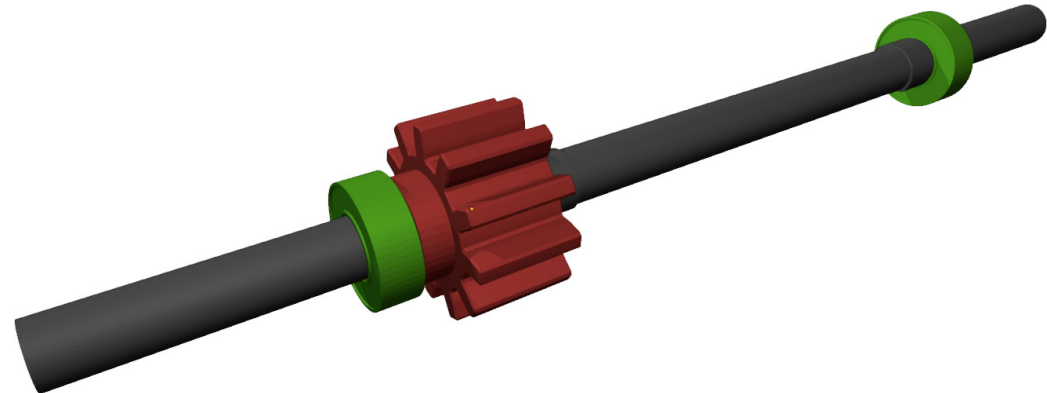
5



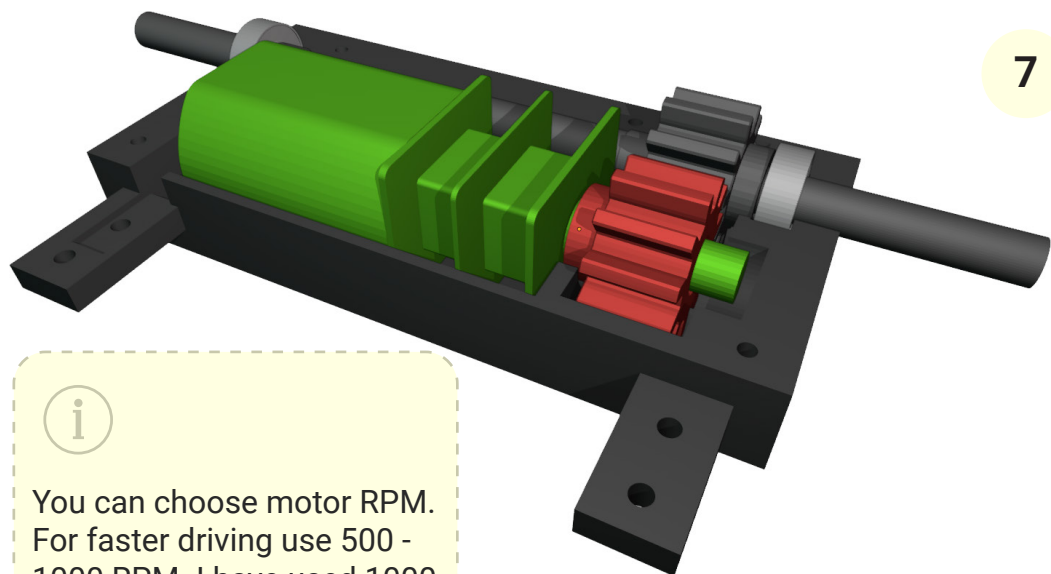
2x M1.2x5



6



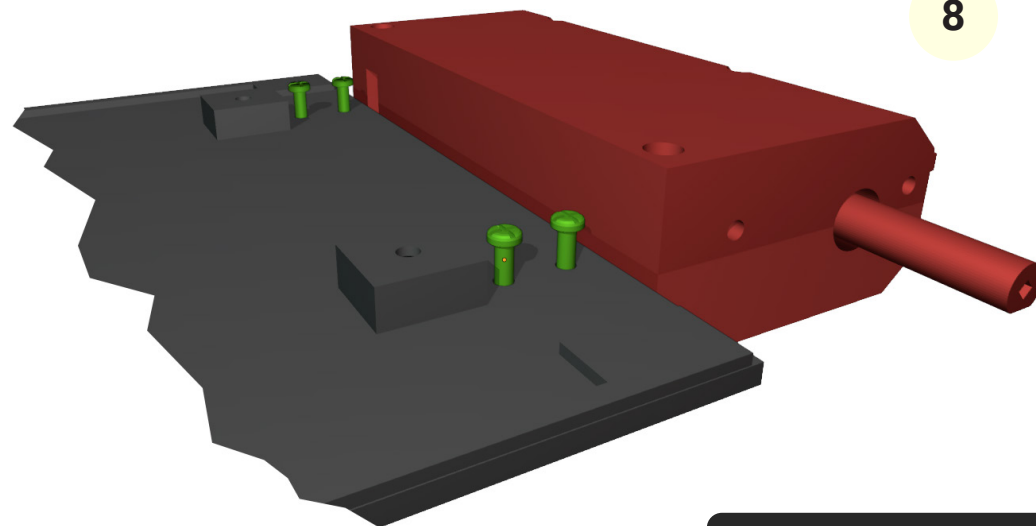
4x 3x6x2mm bearings and gear has to fit tightly



7



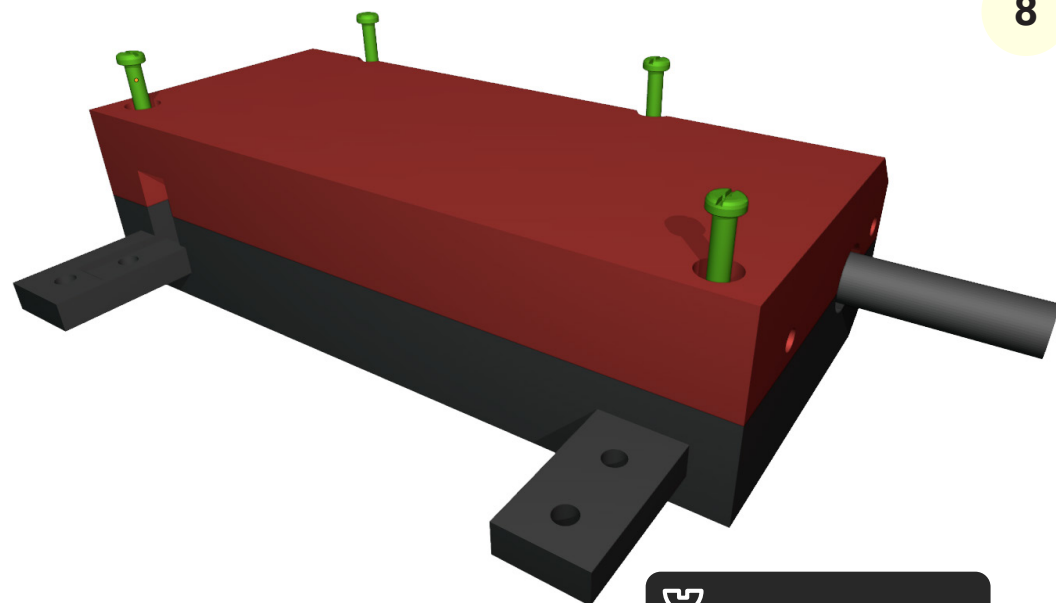
You can choose motor RPM.  
For faster driving use 500 -  
1000 RPM. I have used 1000  
RPM.



8



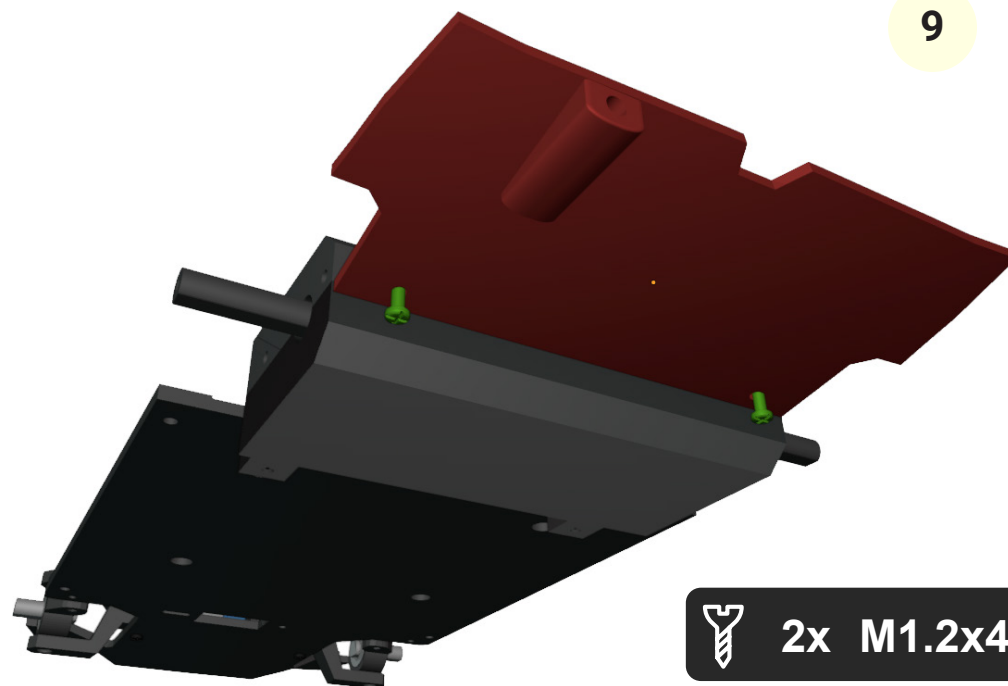
4x M1.2x4



8



4x M1x4

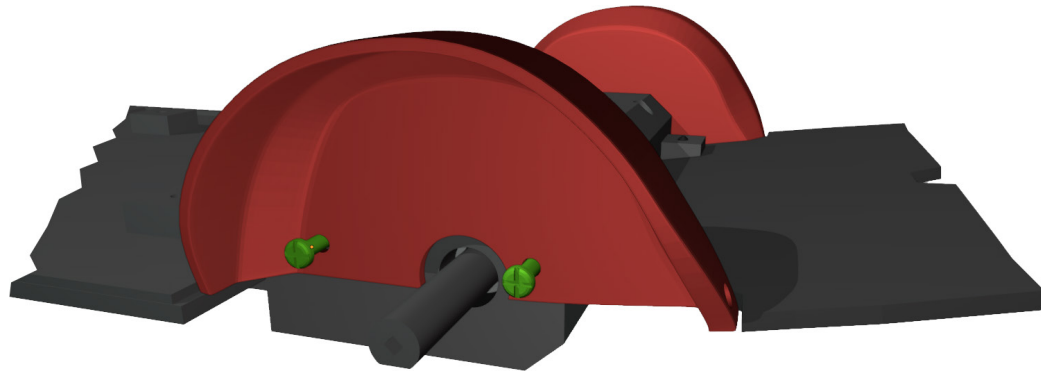


9



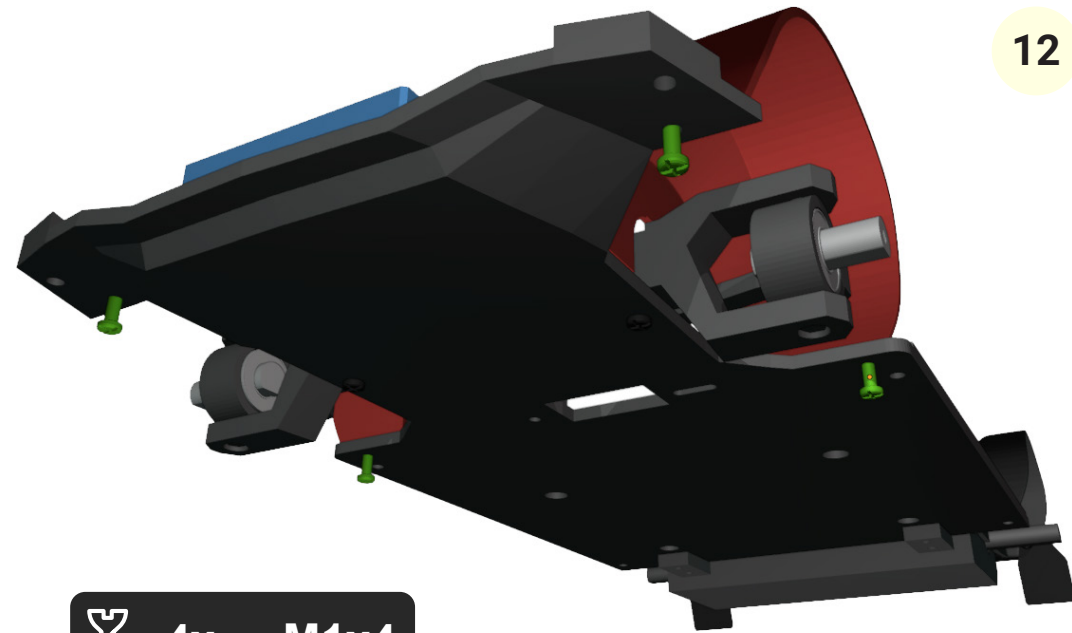
2x M1.2x4

10



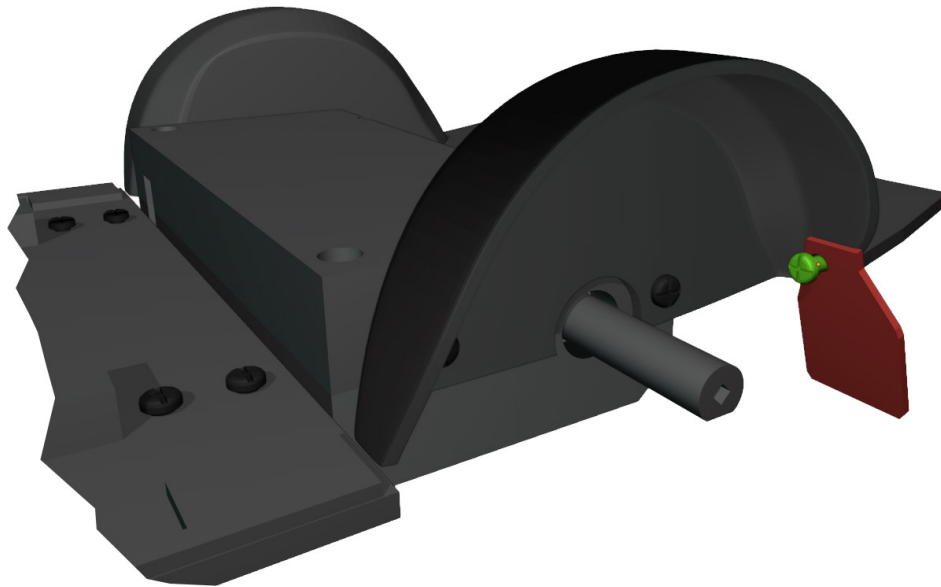
 4x M1.2x3

12



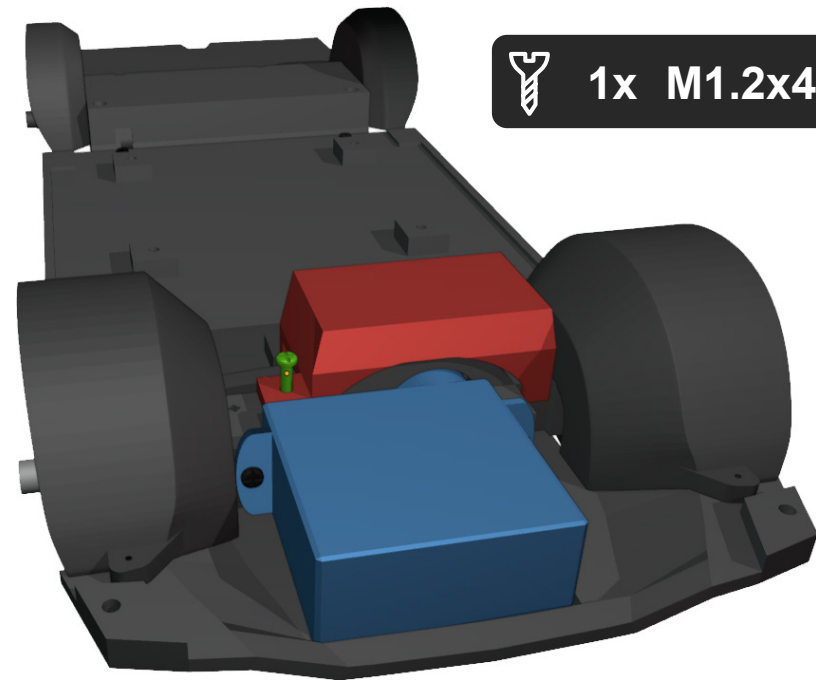
 4x M1x4

11

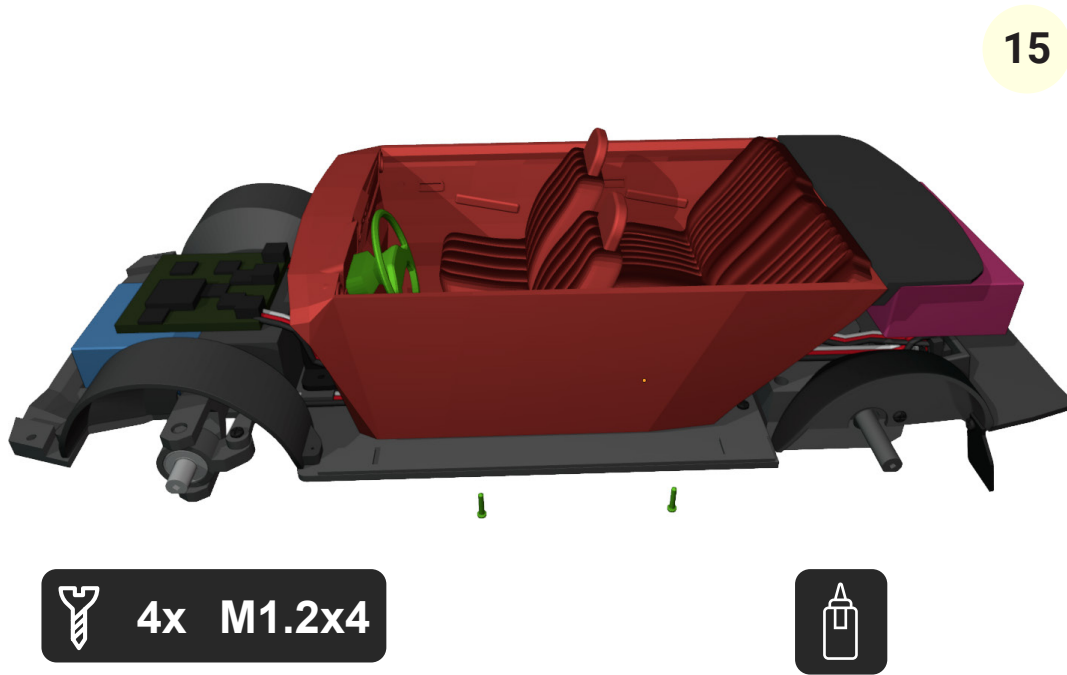
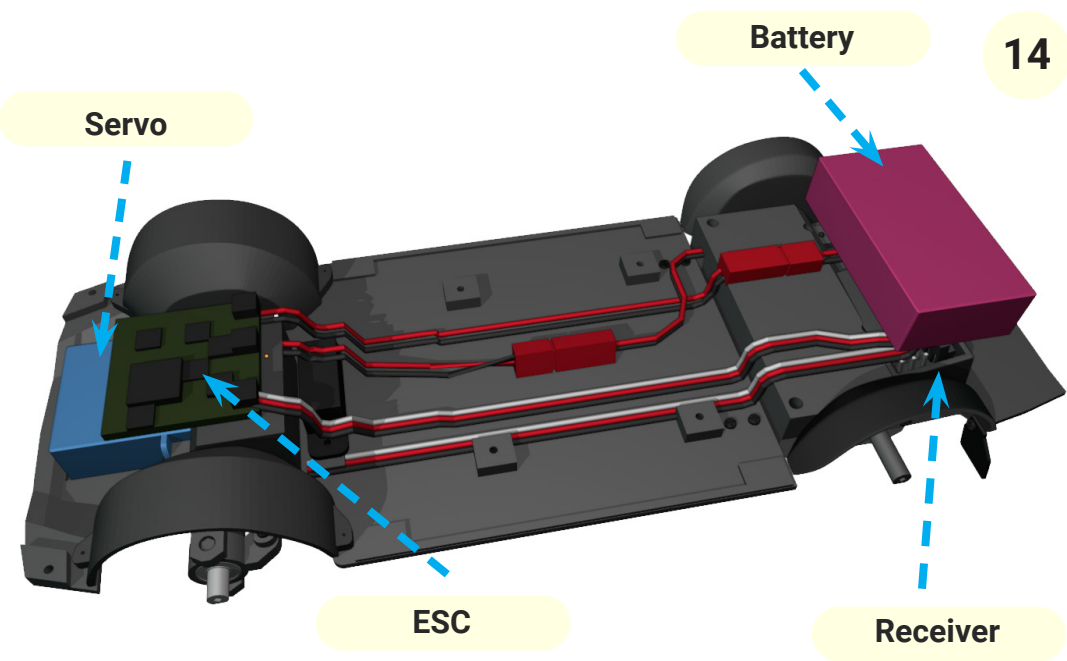


 2x M1.2x3

13



 1x M1.2x4

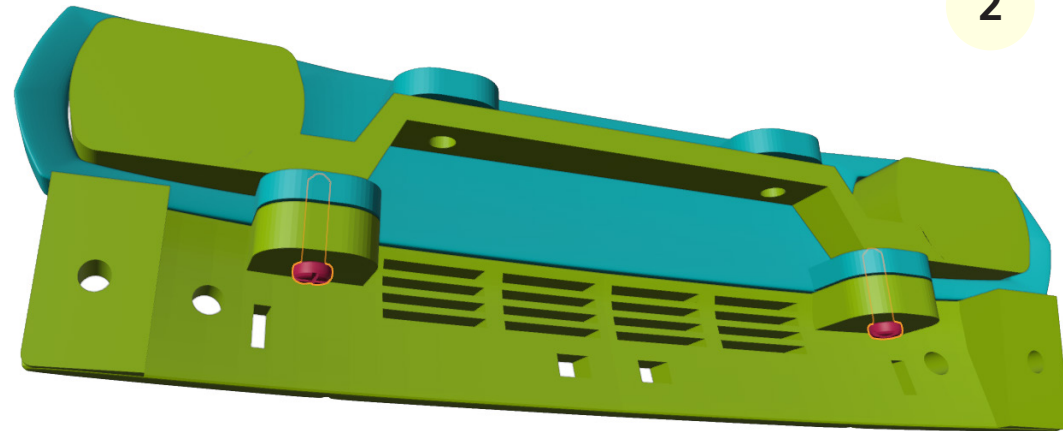


**Great job!**  
The chassis is done!  
Now let's do the body.

## 2. Body



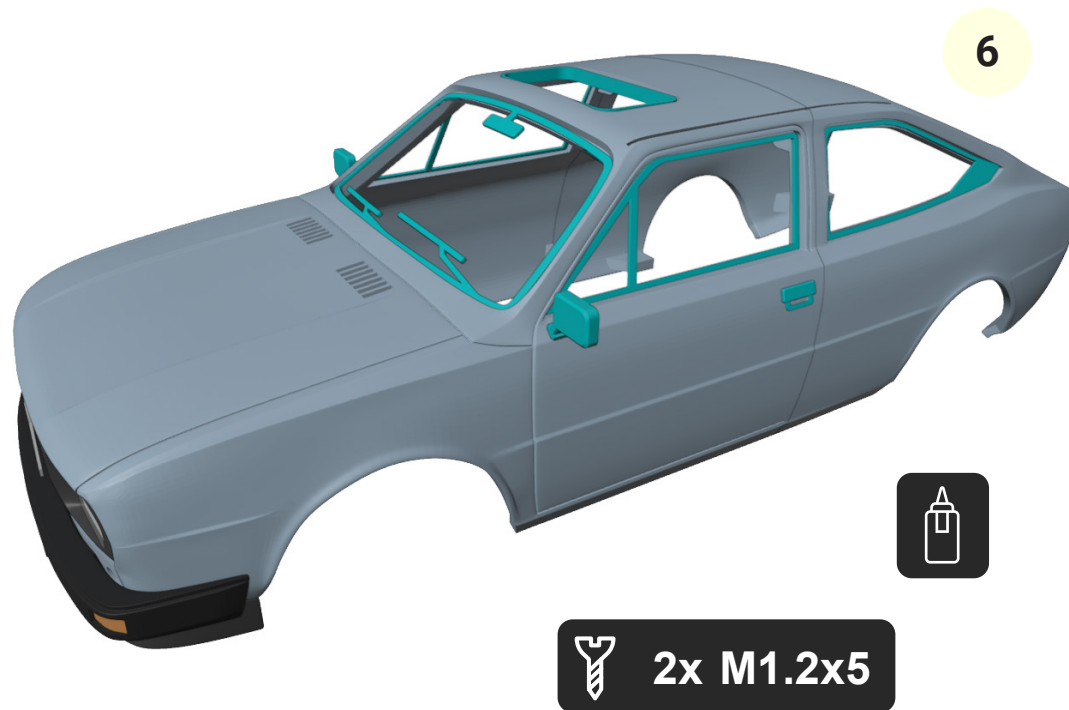
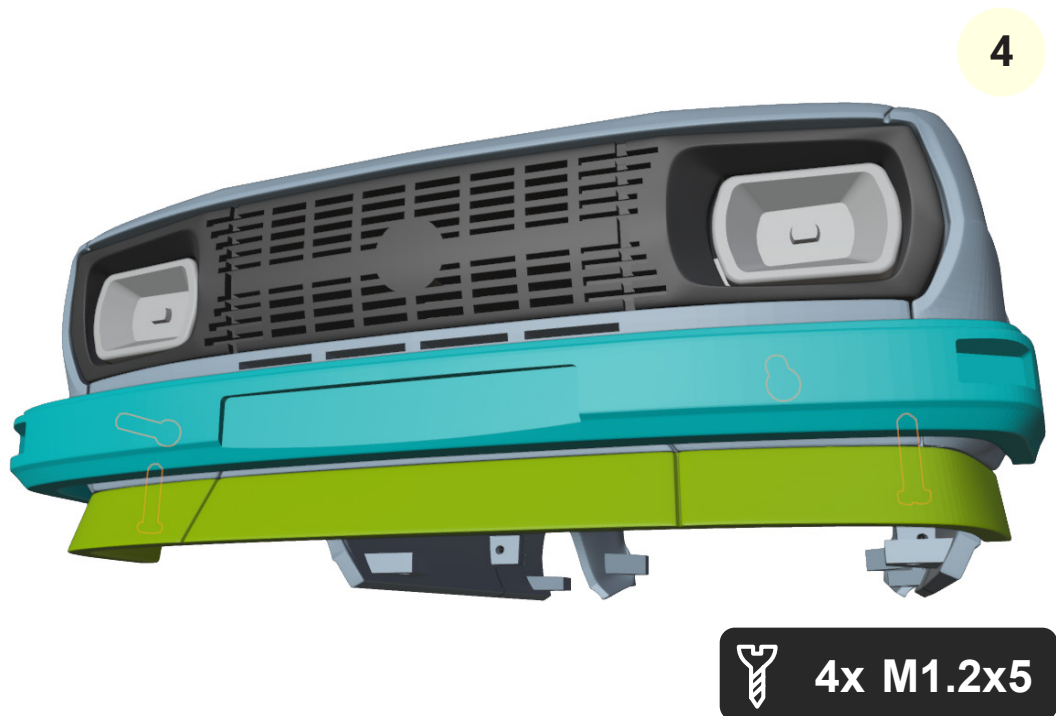
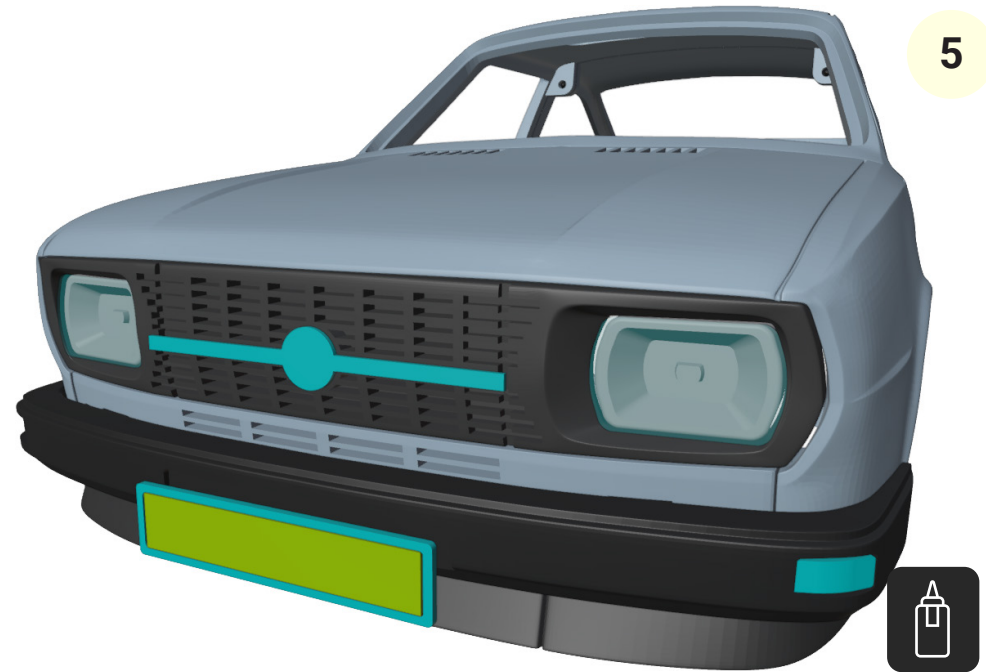
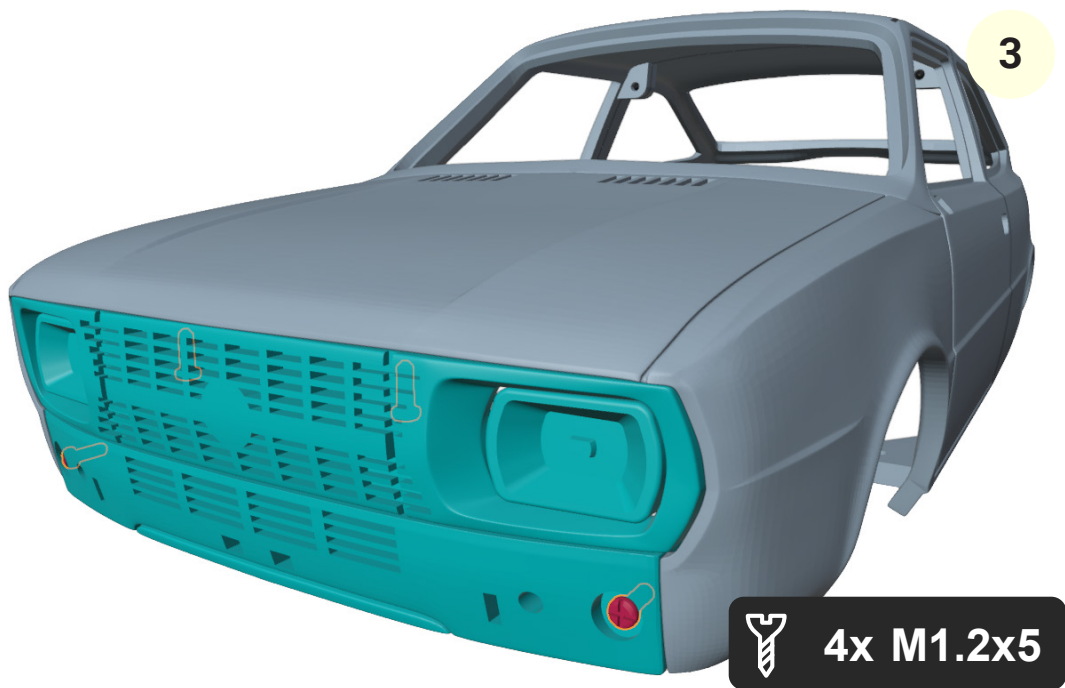
4x M1.2x5

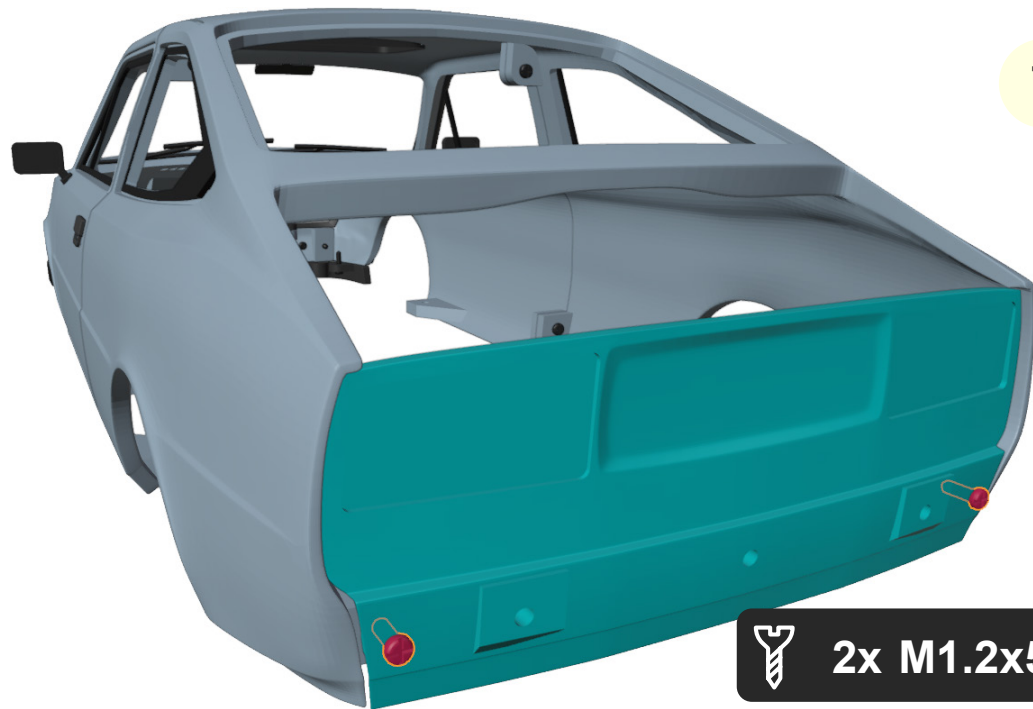


2x M1.2x5

1

2





7



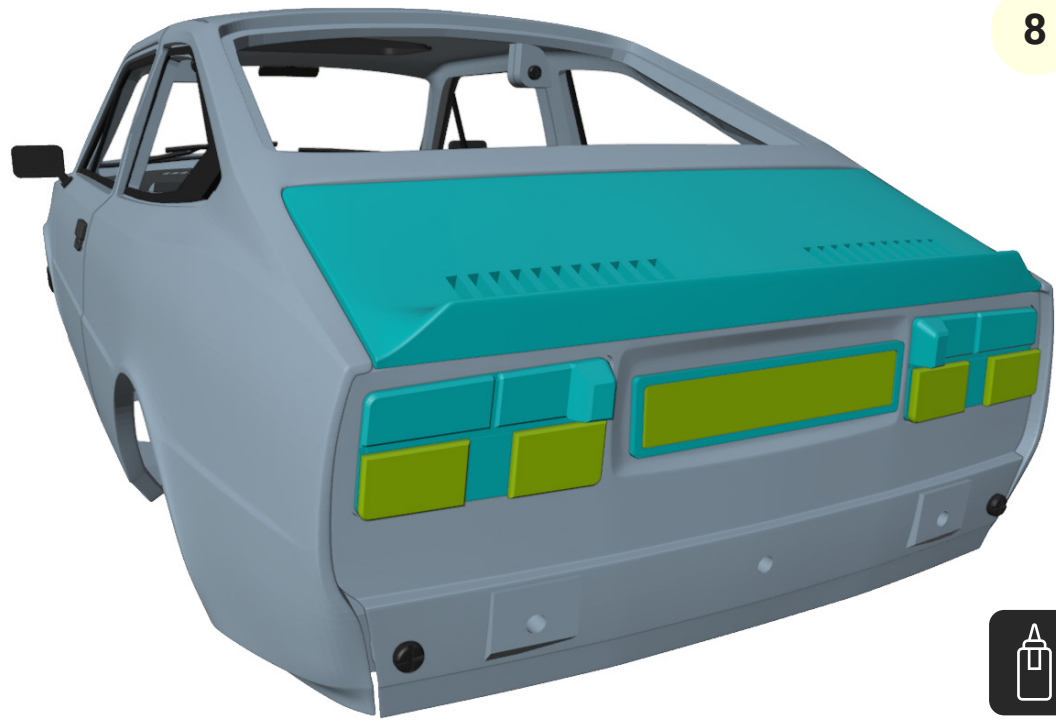
2x M1.2x5



9



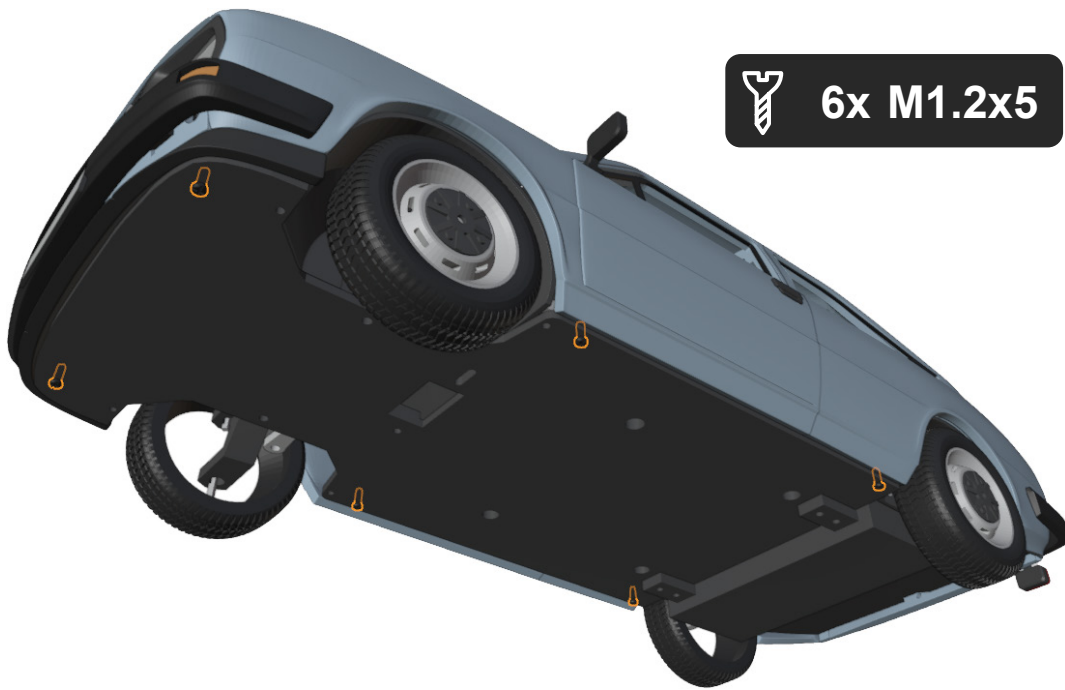
2x M1.2x5



8



10



**Great job!** We are done...  
Hope you enjoyed the build  
and for more models, visit:  
**3drcmodels.com** and  
**youtube.com/@3DRcModels**