

# Favo

1:24 scale, fully 3D printed on FDM



More models at:

**[www.3drcmodels.com](http://www.3drcmodels.com)**

# Non printed parts

## Screws

**15x M1.2 x 5mm**

**50x M1.2 x 4mm**

**4x M1 x 4mm**



## Bearings

**6x 3x6x2**



*\* If you DONT want to build car as RC, you don't need any bearings*

## RC electronic *\* Optional if you want to have it as RC*



**2S ESC**

*\* No fancy ESC required.*



**1x 6V DC Motor**

*\* cca 1000 RPM*



**2S Lipo battery**

*\* Around 400mah is more than enough.*



**RC Set**

*\* Just basic RC set will do the job*

# Prologue

## Thank you

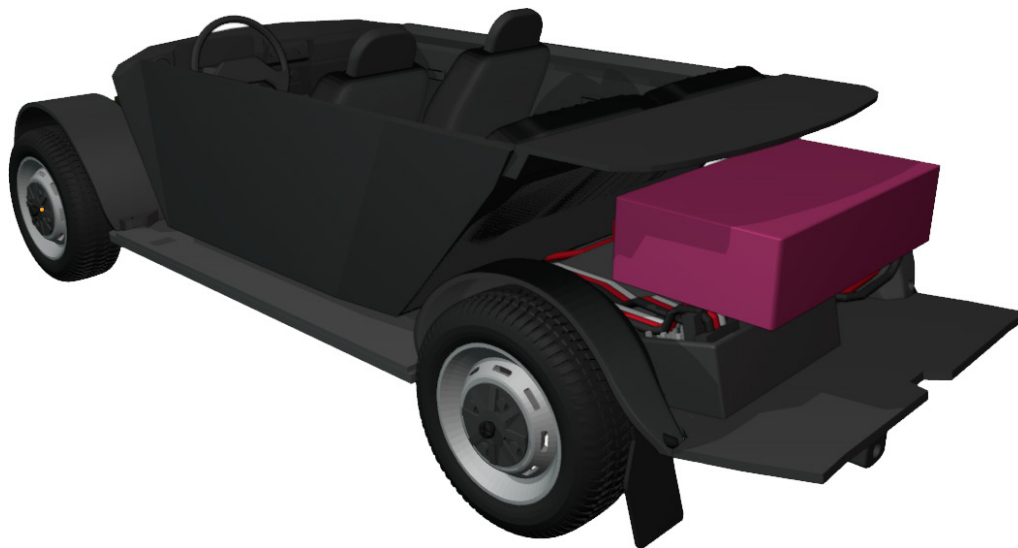
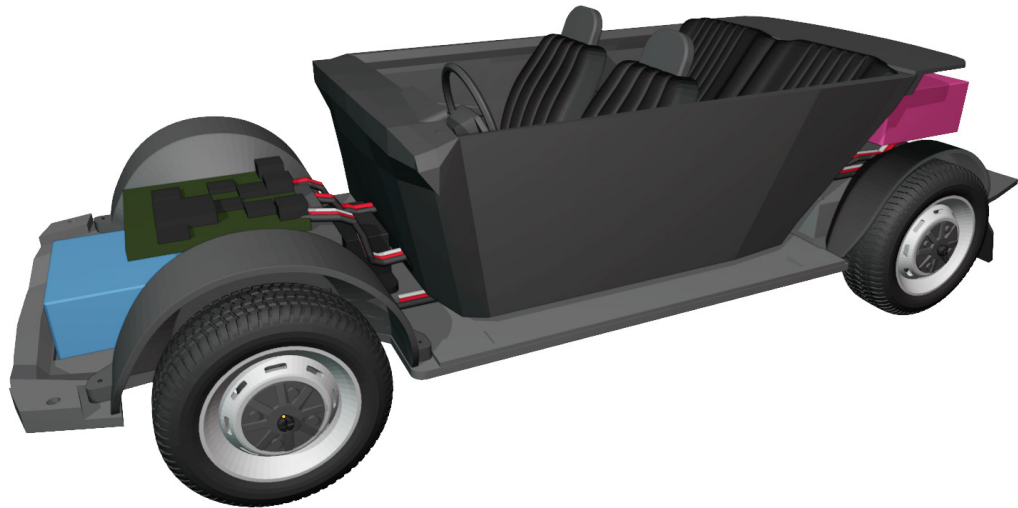
Thank you for supporting my hobby by buying this model. I had great time designing this kit and I hope you will have same building it and playing with it. Thanks small scale, it's very easy, cheap and quick to print and build.

More models can be found at  
[www.3drcmodels.com](http://www.3drcmodels.com)

## Warning!

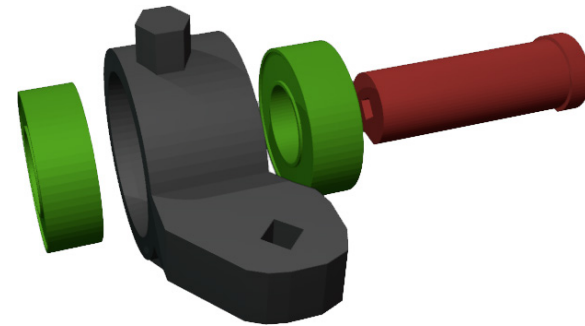
Please be careful! Kit contain lots of small parts that can be swallow by infant. Event after build is finished, small parts can be ripped off and can be dangerous. I don't recommend giving this toy to kid younger 3 years.

# 1. Chassis

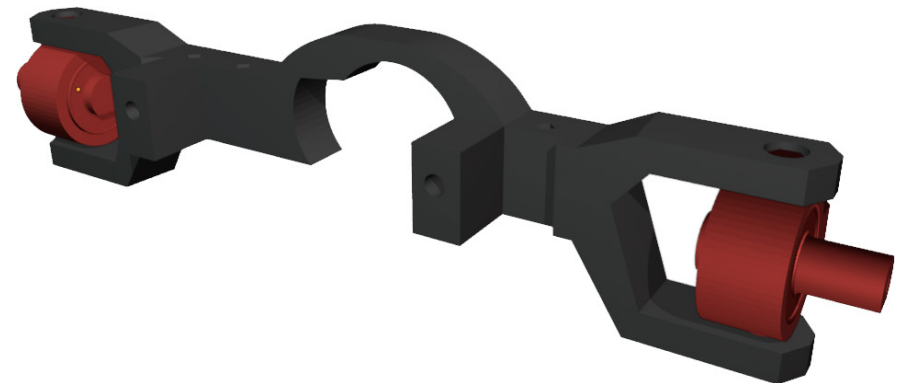


4x 3x6x2mm bearings and shaft has to fit tightly

1



2

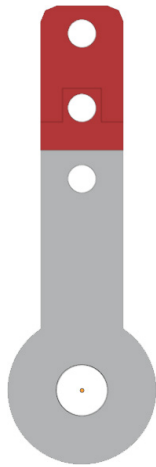


3

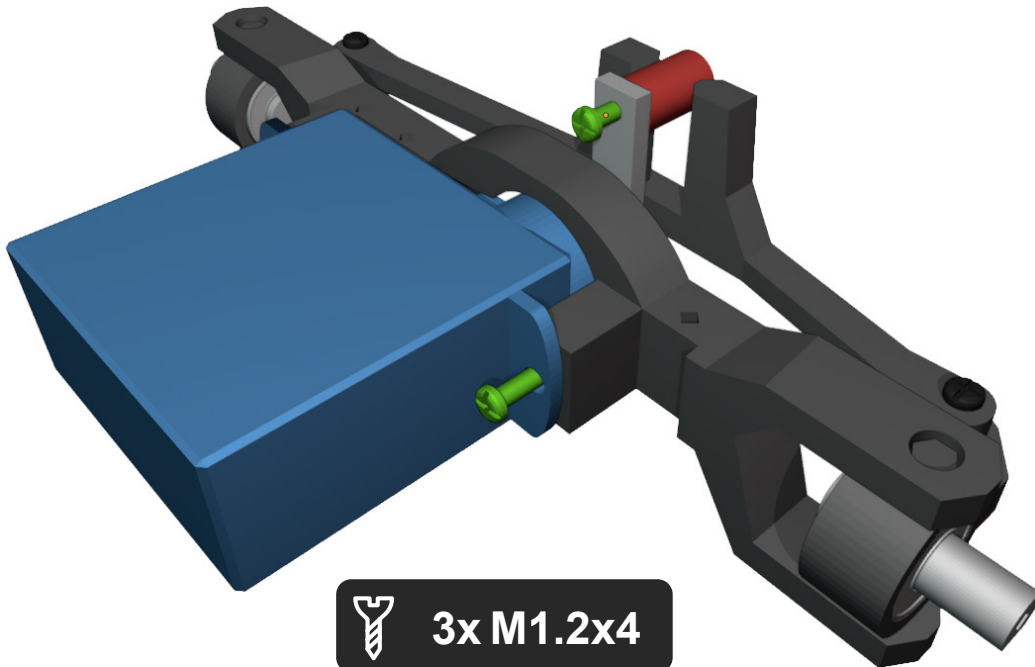


2x M1.2x4

4



You need to cut red part of steering pin so it fits under cover.

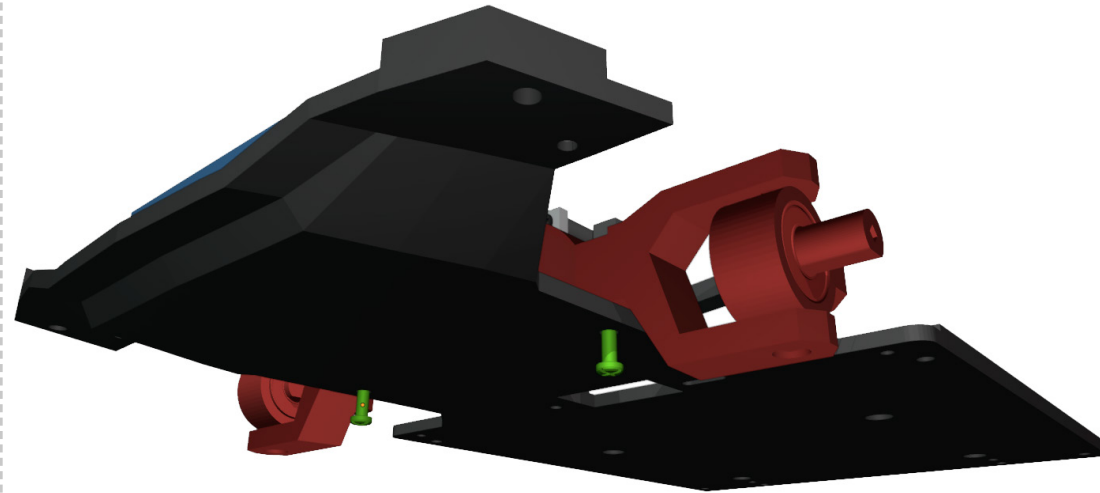


3x M1.2x4

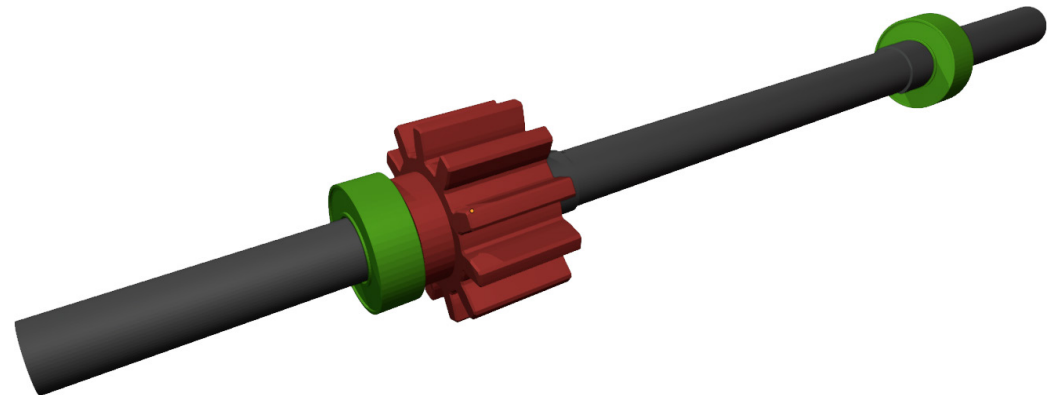
5



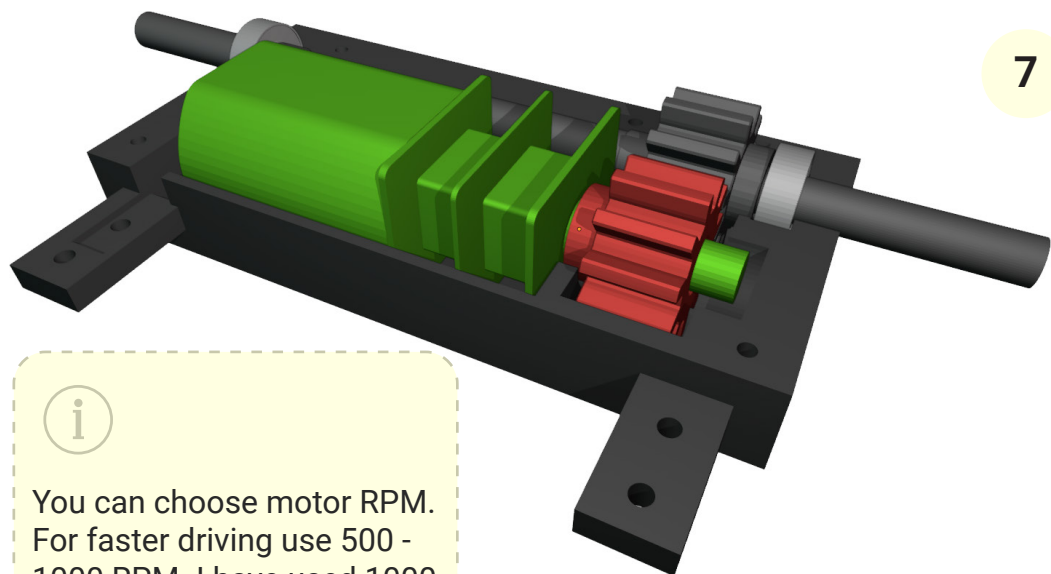
2x M1.2x5



6



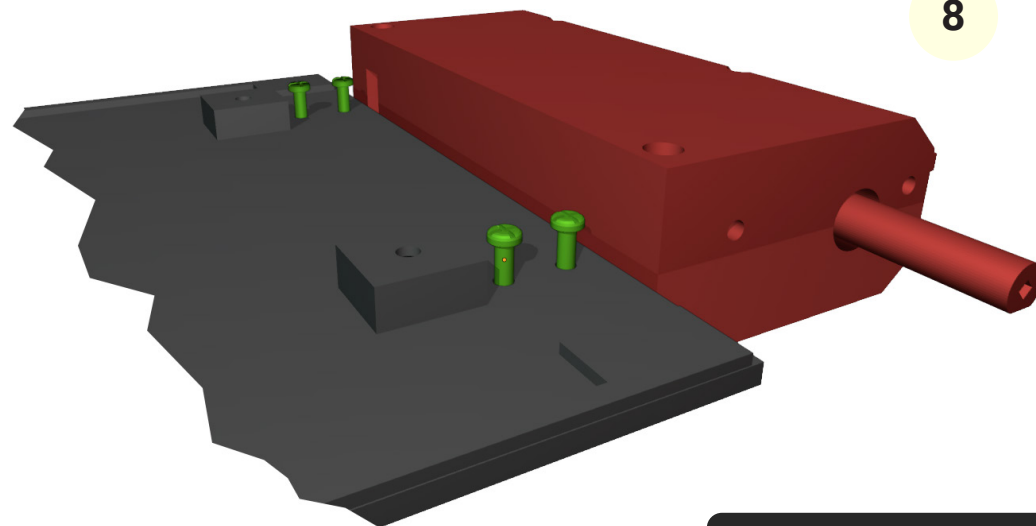
4x 3x6x2mm bearings and gear has to fit tightly



7



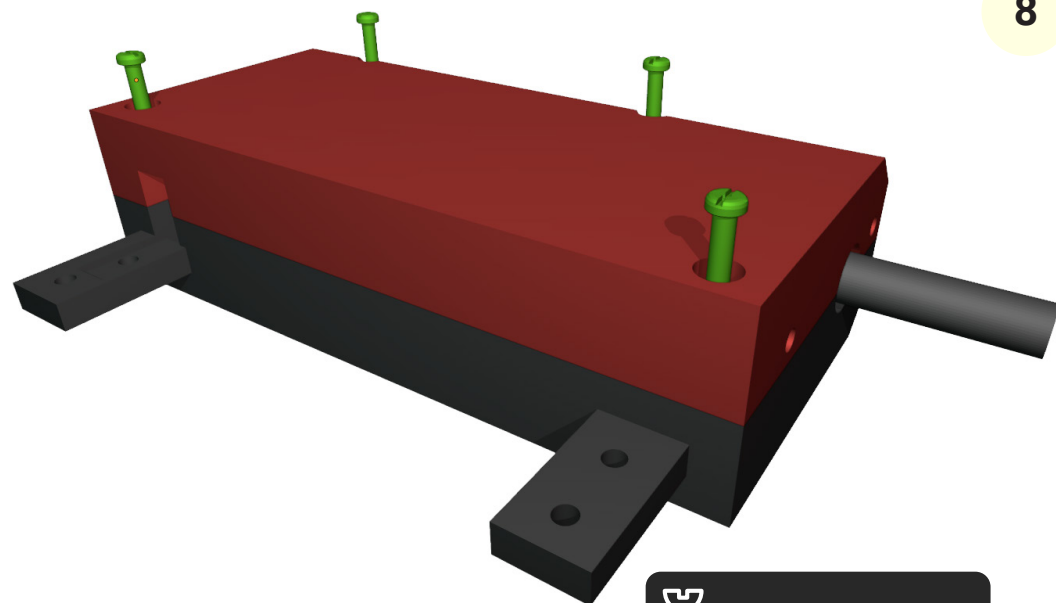
You can choose motor RPM.  
For faster driving use 500 -  
1000 RPM. I have used 1000  
RPM.



8



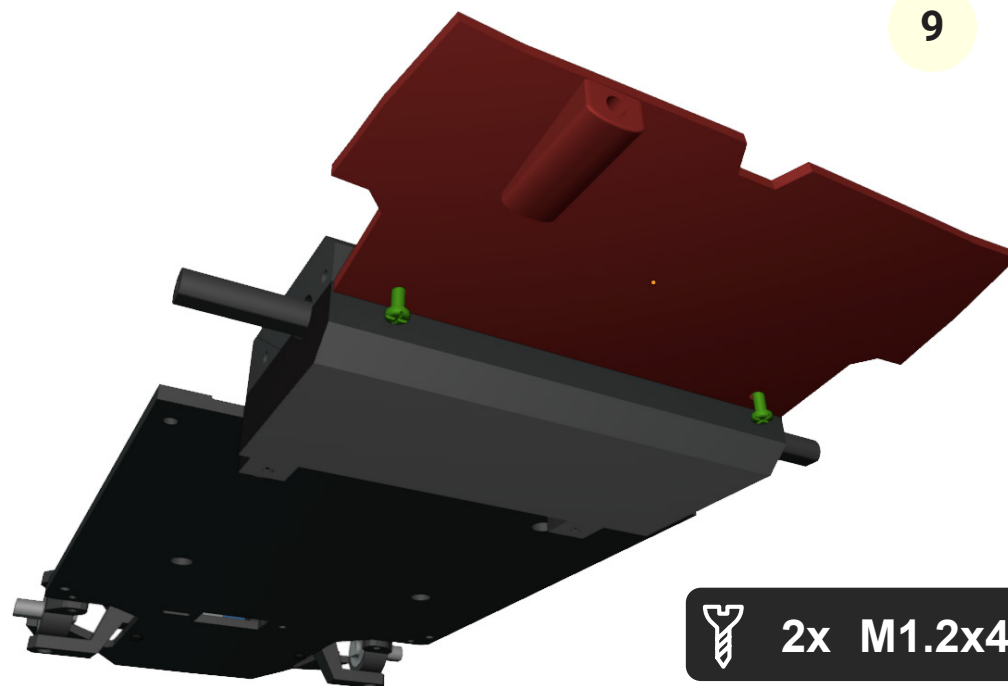
4x M1.2x4



8



4x M1x4

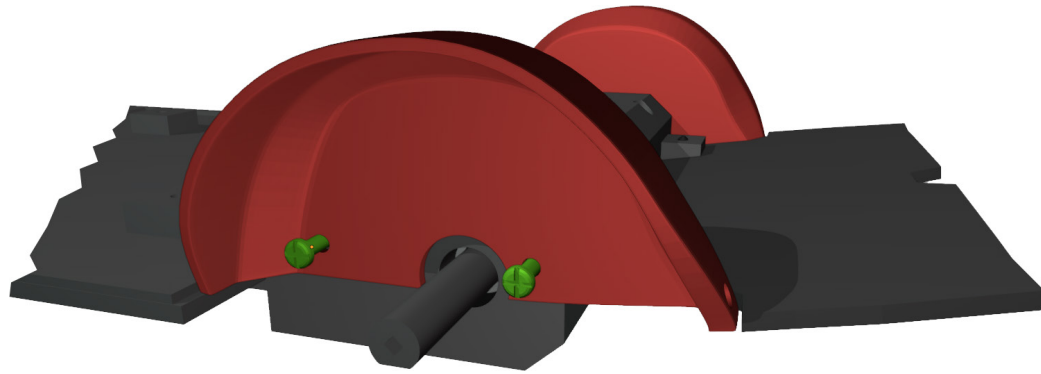


9



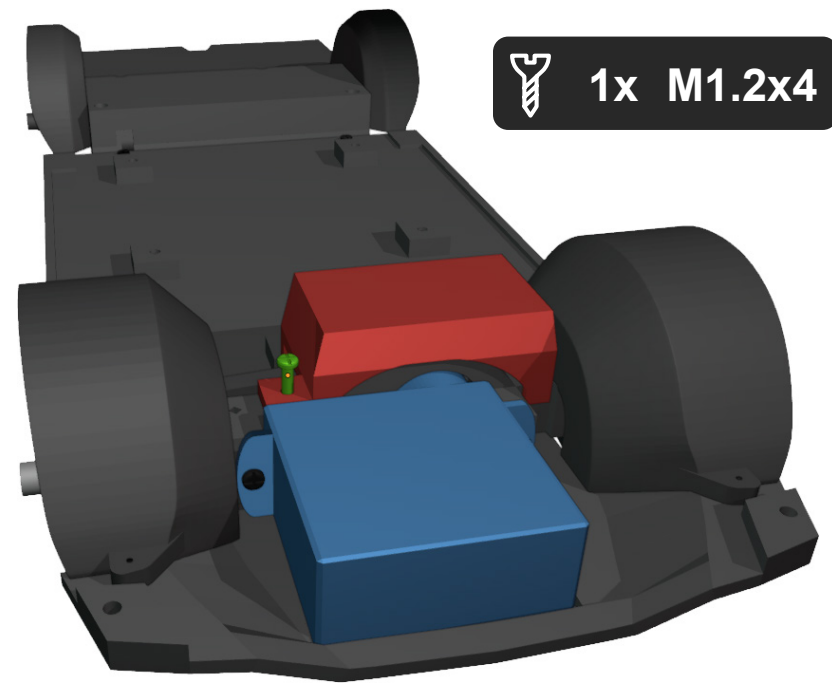
2x M1.2x4

10



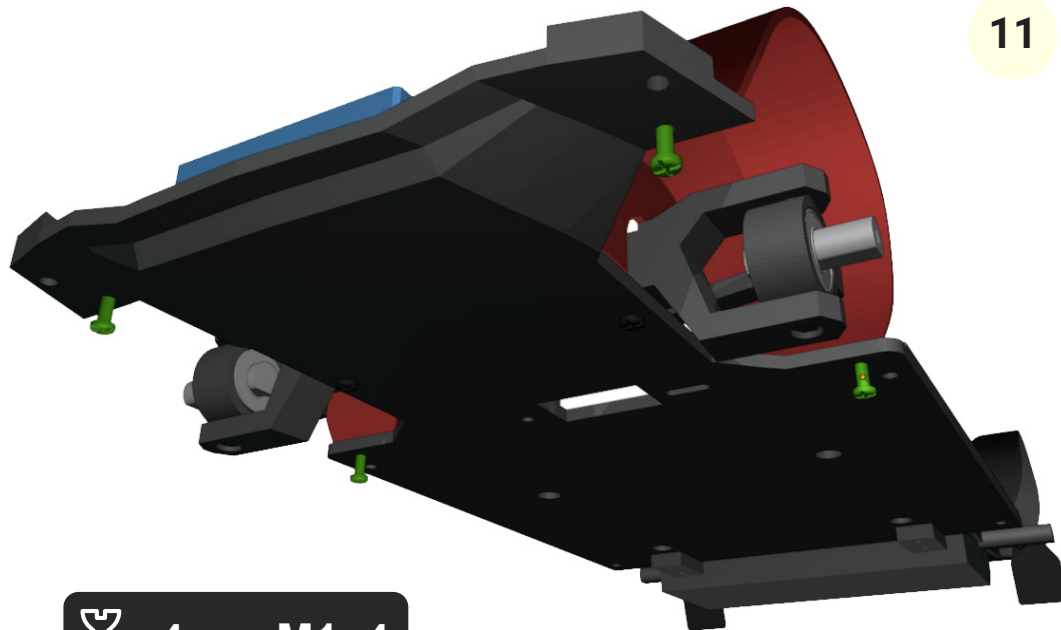
4x M1.2x3

12



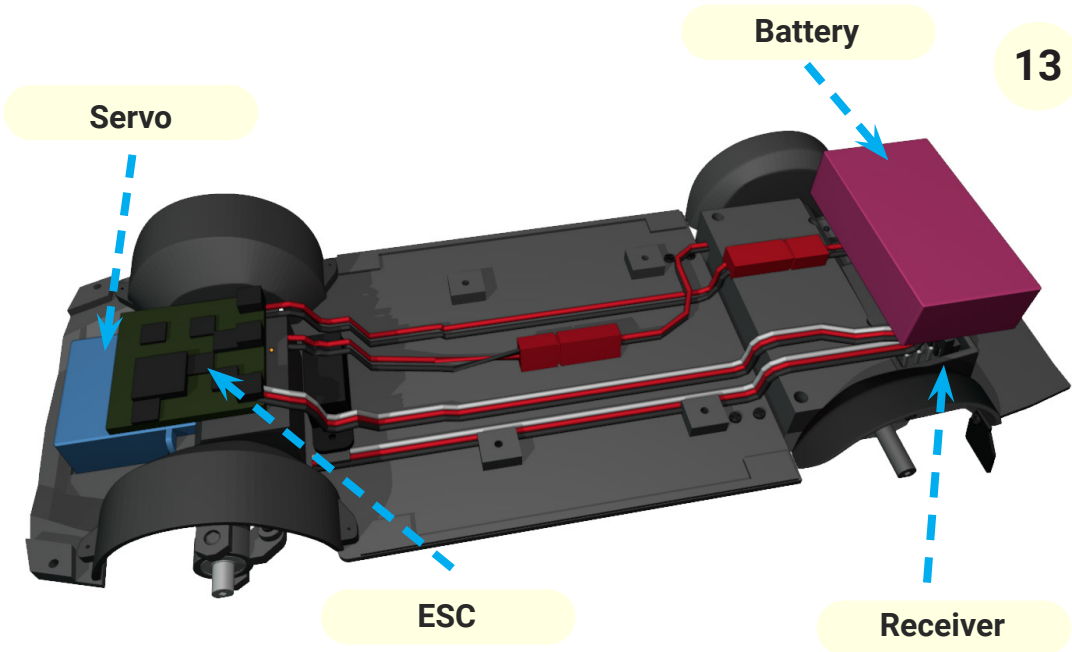
1x M1.2x4

11



4x M1x4

13



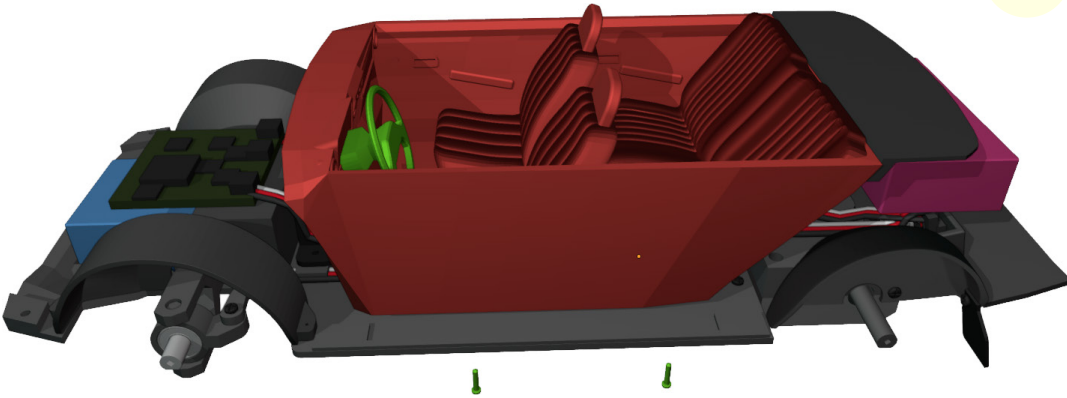
Servo

Battery

ESC

Receiver

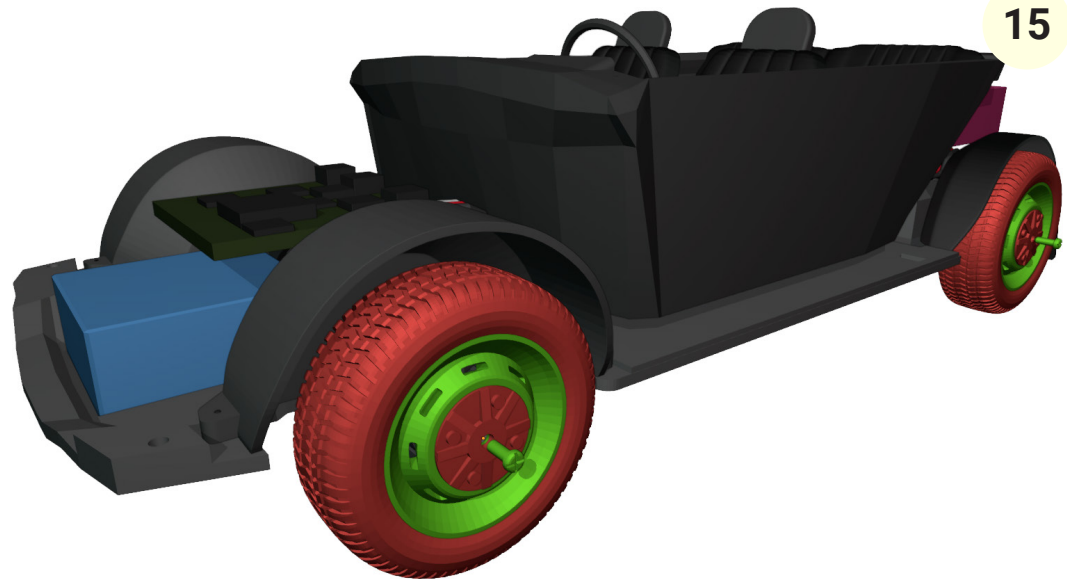
14



4x M1.2x4



15

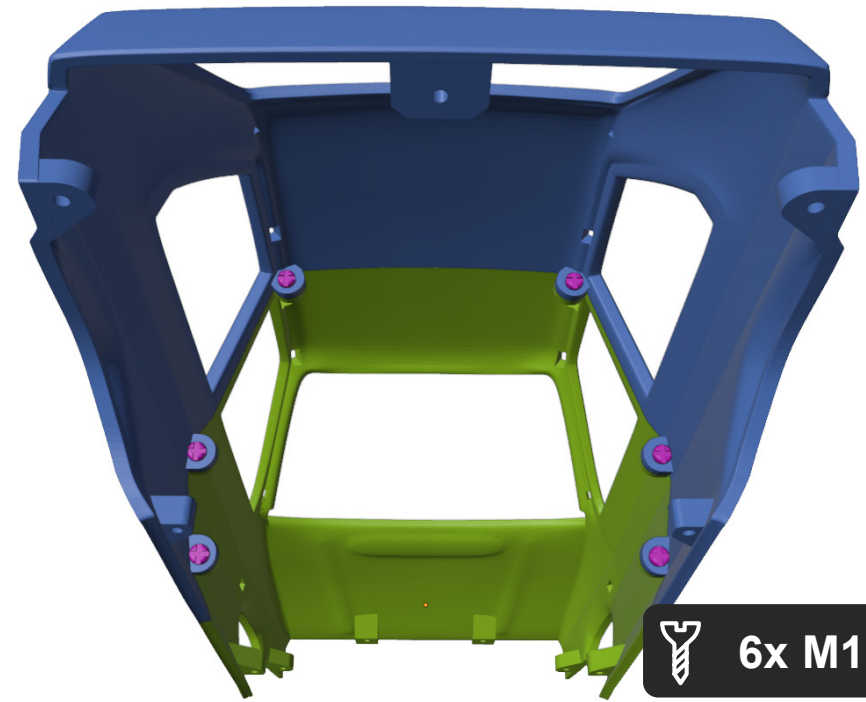


4x M1.2x3

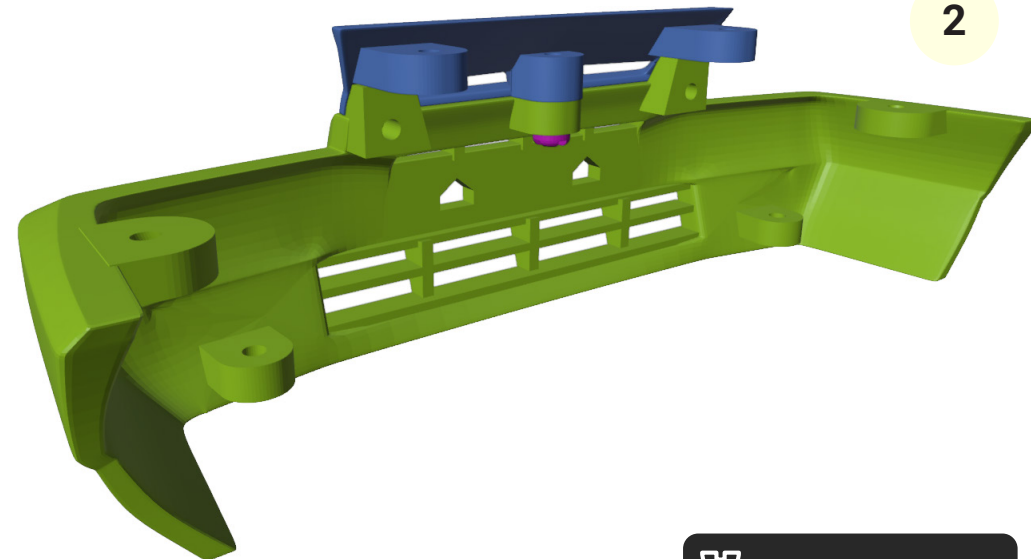
**Great job!**

The chassis is done!  
Now let's do the body.

## 2. Body



6x M1.2x5



1x M1.2x5



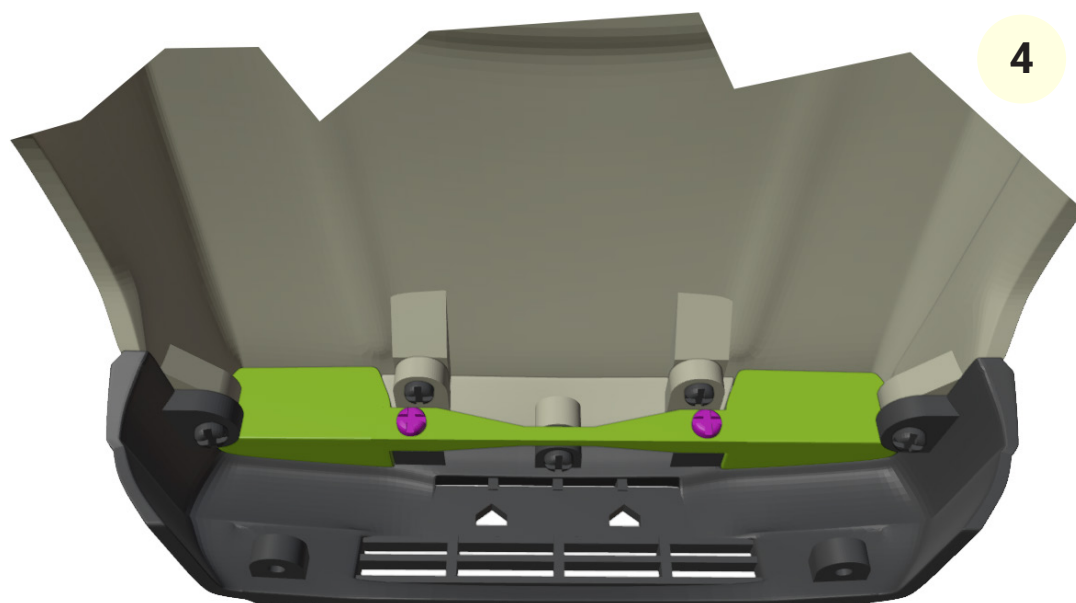
3



4x M1.2x5



5



4



2x M1.2x5



6

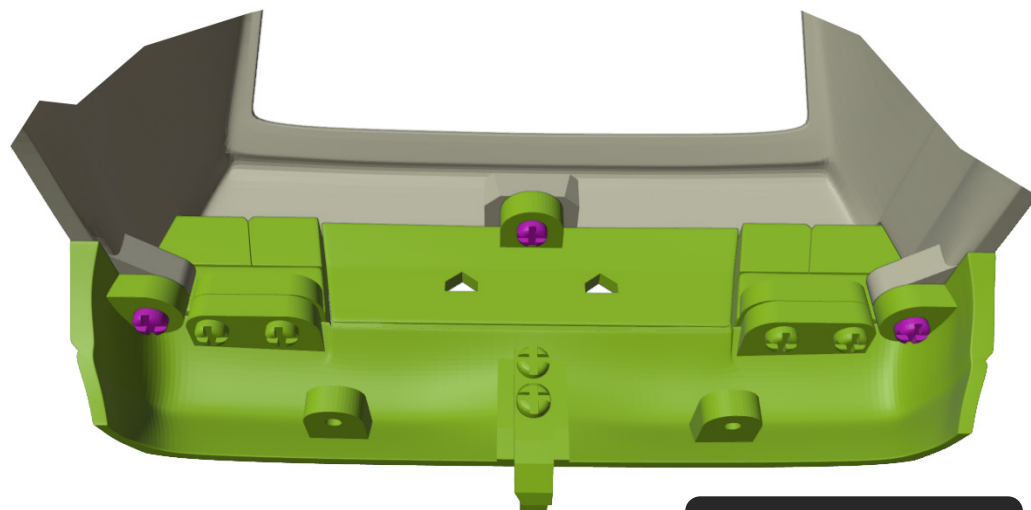


7



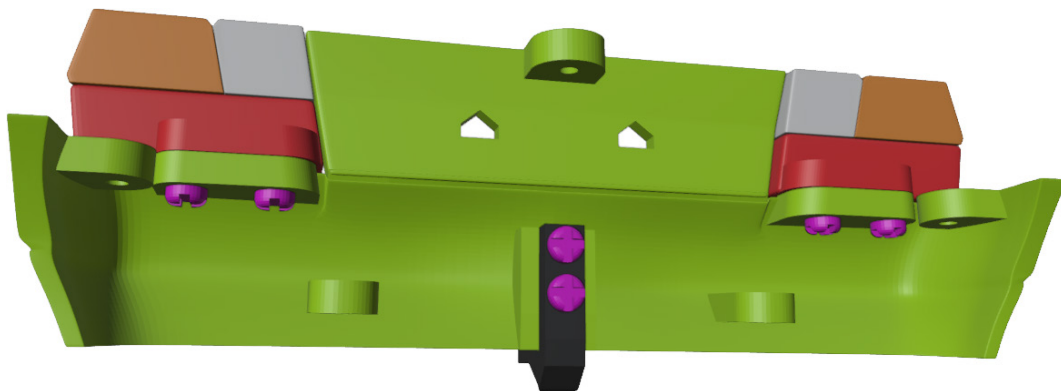
 4x M1x5

9



 3x M1x5

8



 6x M1.2x5

10





8x M1.2x5



**Great job!** We are done...  
Hope you enjoyed the build  
and for more models, visit:  
**3drcmodels.com** and  
**youtube.com/@3DRcModels**