

# RC Škoda Octavia 1 Combi

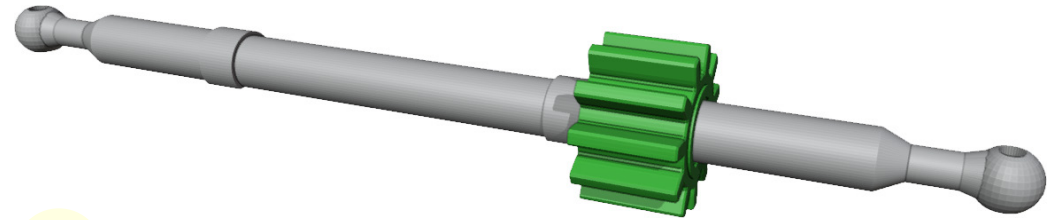
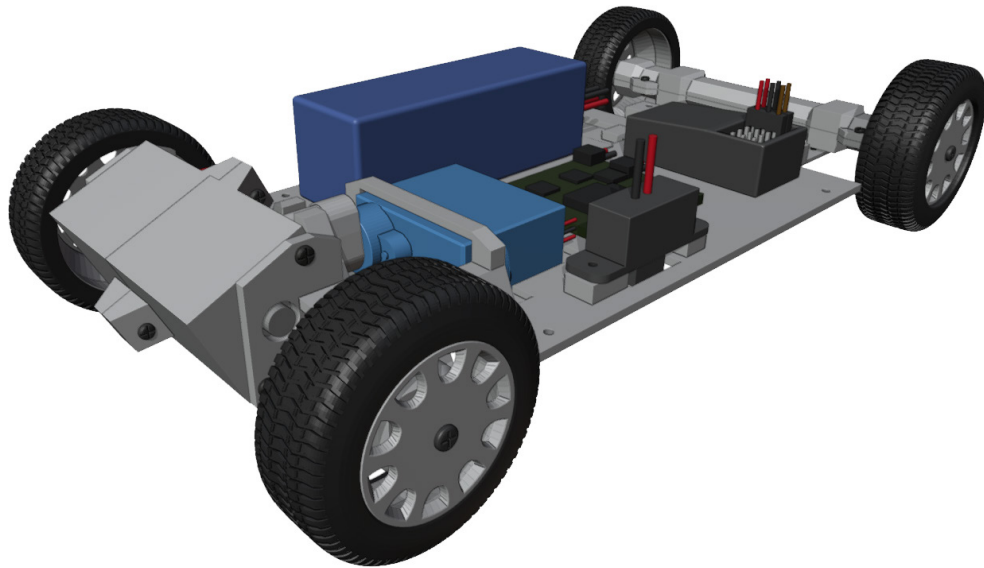
1:24 scale, fully 3D printed on FDM



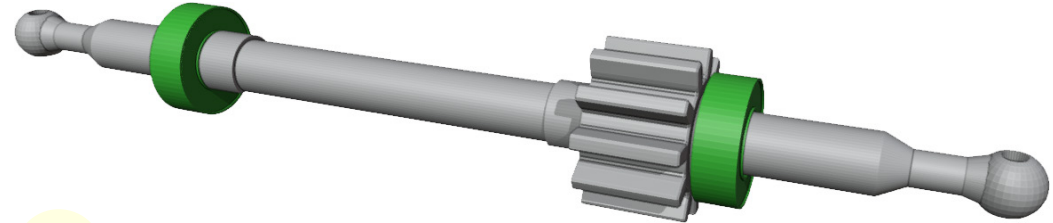
More models at:

**[www.3drcmodels.com](http://www.3drcmodels.com)**

# 1. Chasses



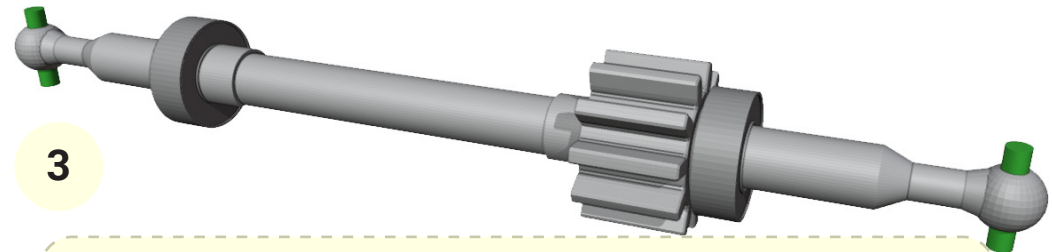
1



2



Bearings 3x6x2 has to fit tightly on axle.

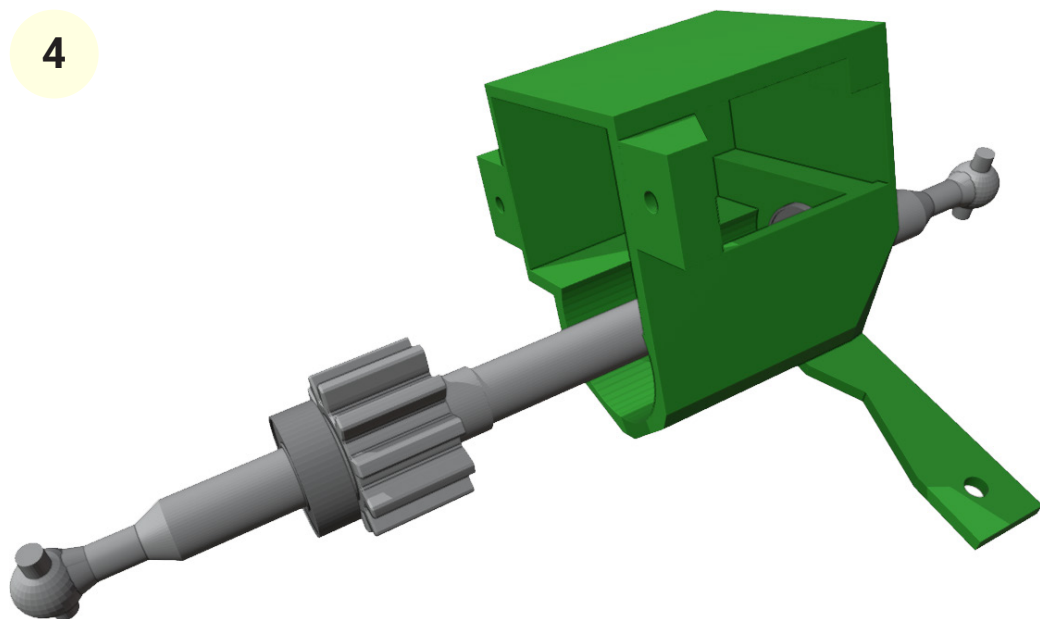


3

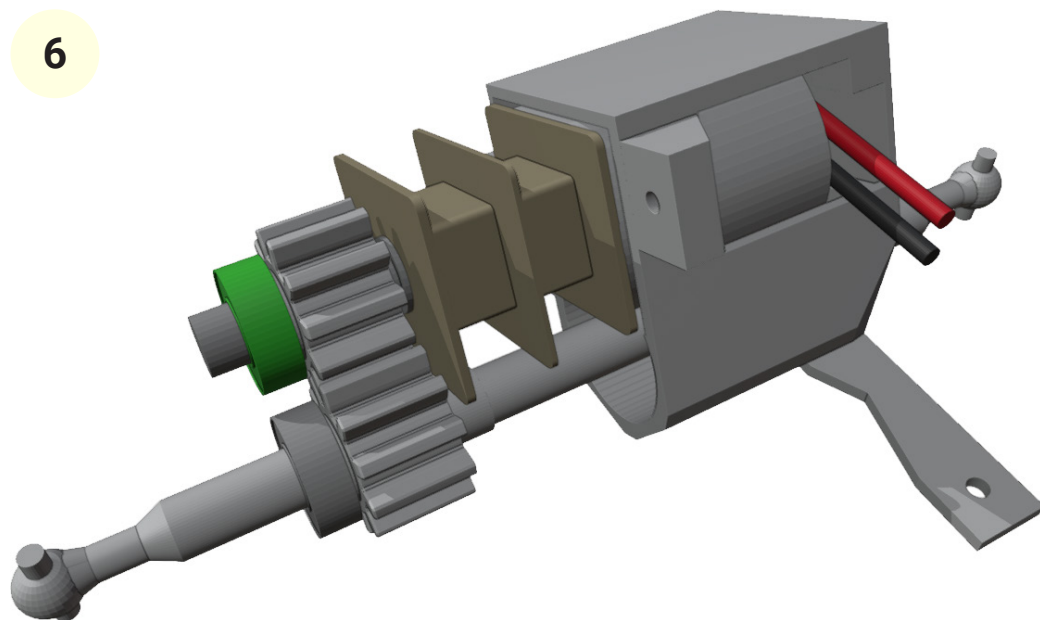


You need 2x 4mm long ~1.1mm thin wire (Best are paper clips.) and 3x 3x6x2.5mm bearings.

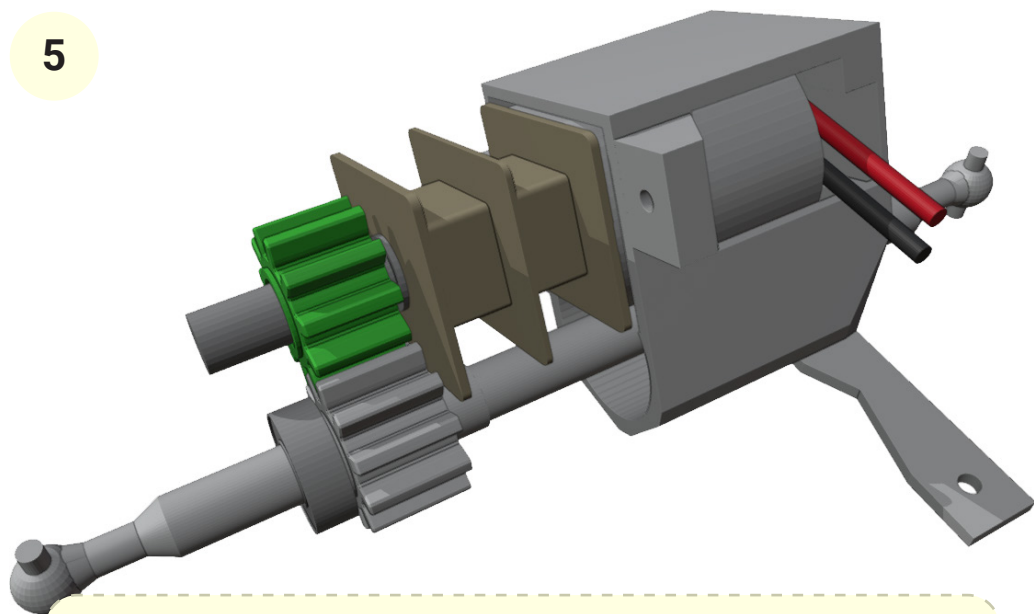
4



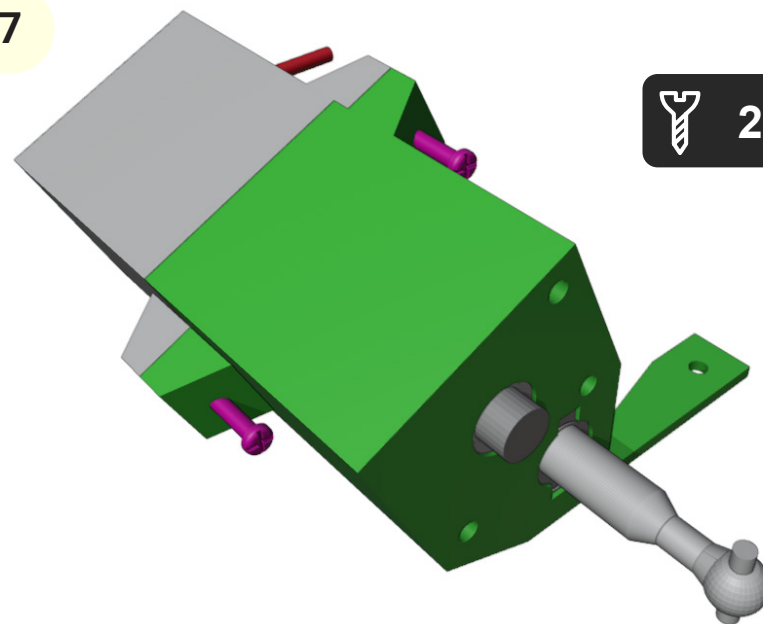
6



5



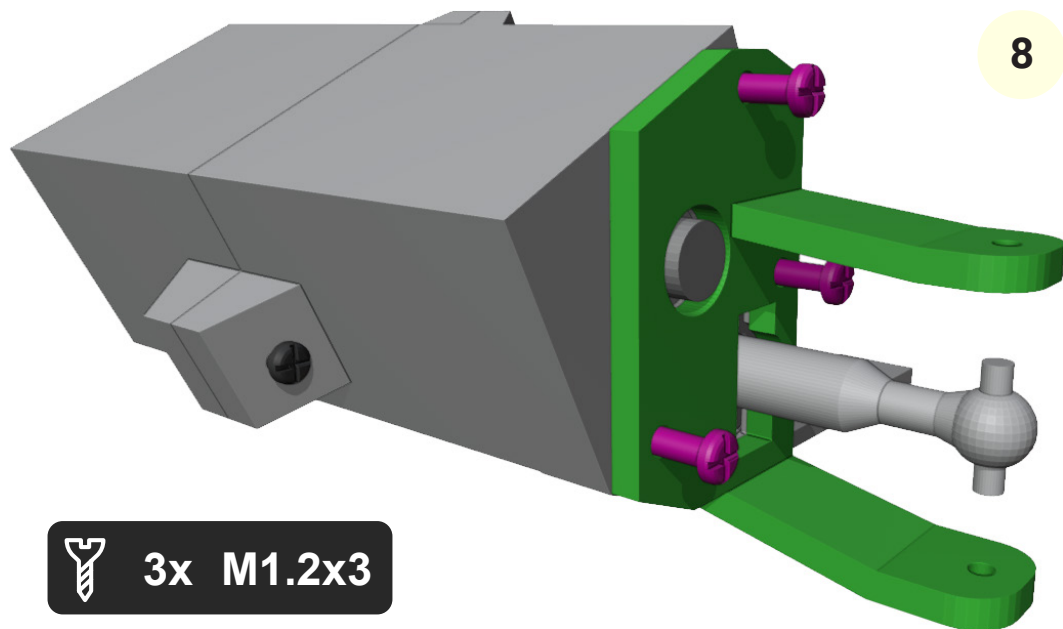
7



2x M1x5



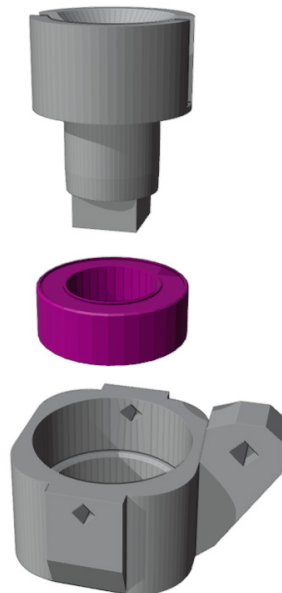
You can choose motor RPM. For faster driving use 500 - 750 RPM. I have used 300 RPM.



8



3x M1.2x3

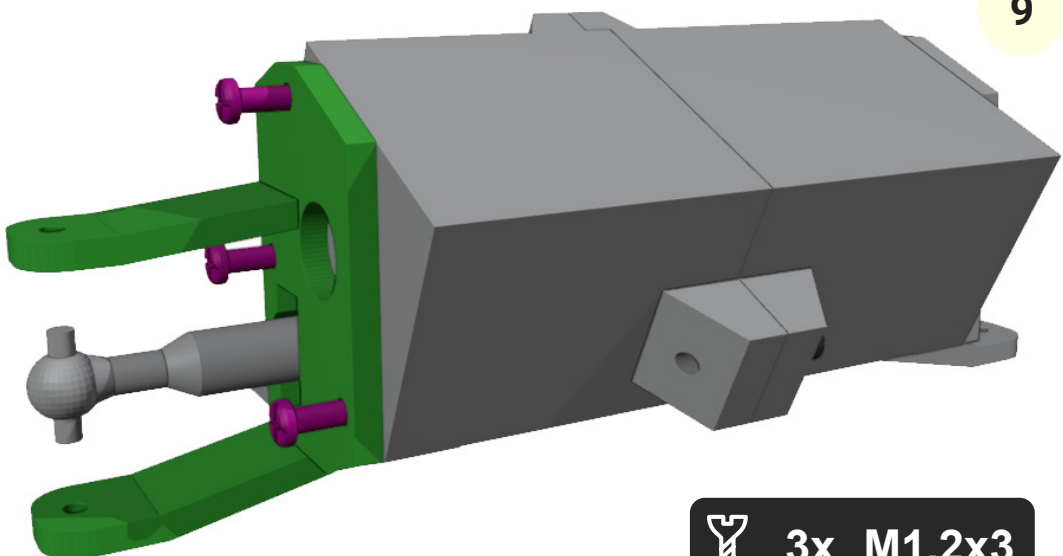


2x



Bearings 5x8x3 has to fit very tight on axle. If axle is too big, you can use sandpaper.

10



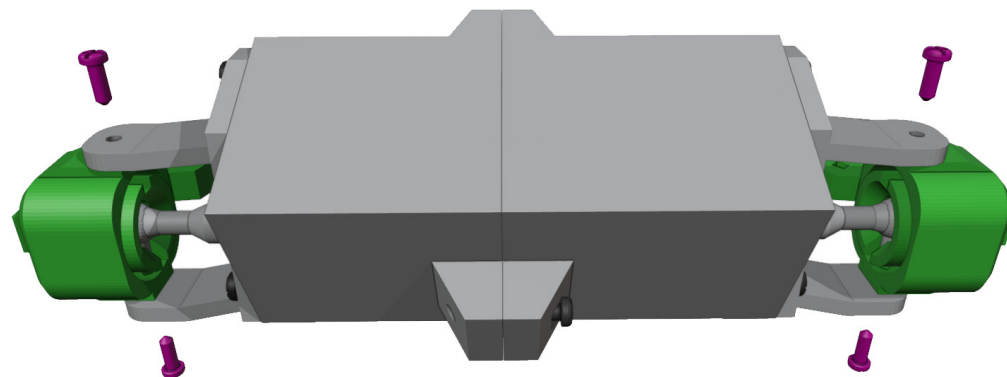
9



3x M1.2x3



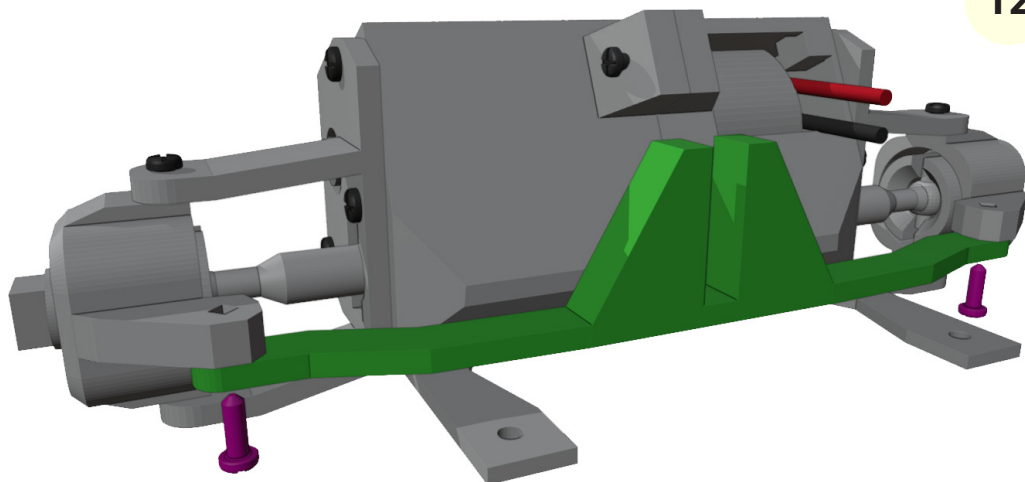
4x M1x4



11



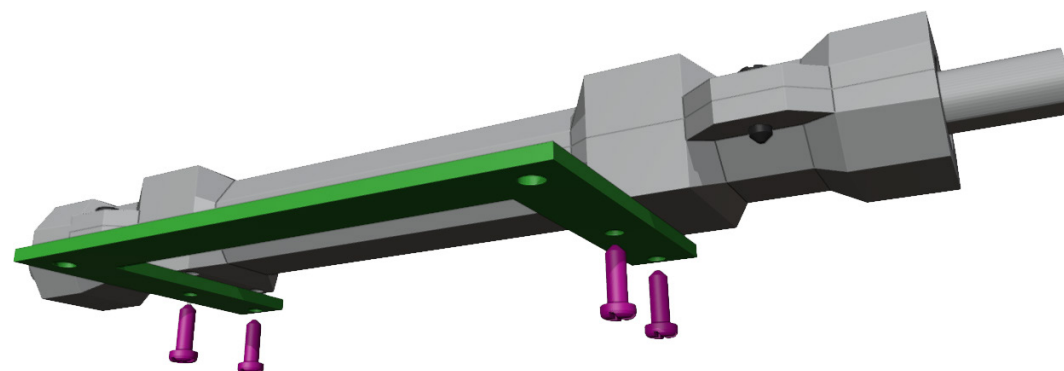
12



 2x M1.2x4

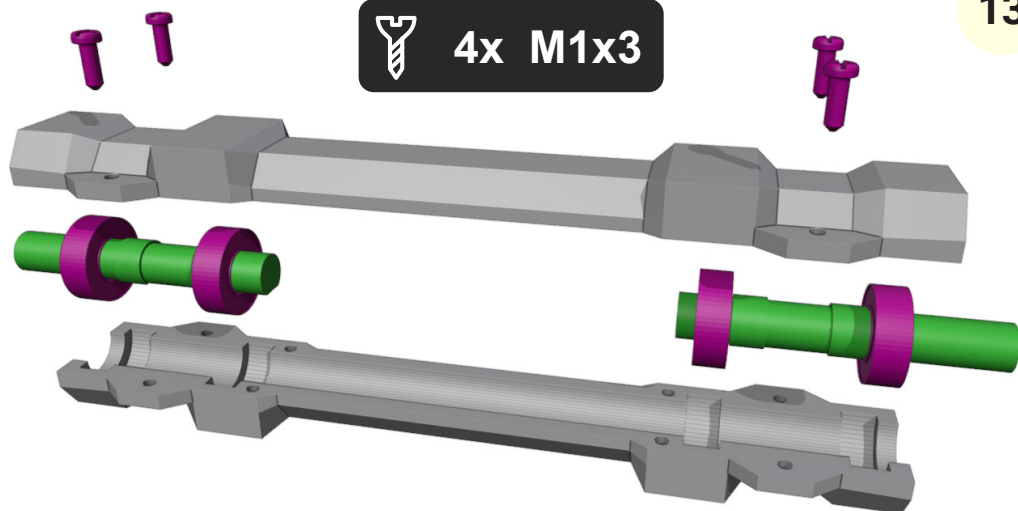
14

 4x M1x3



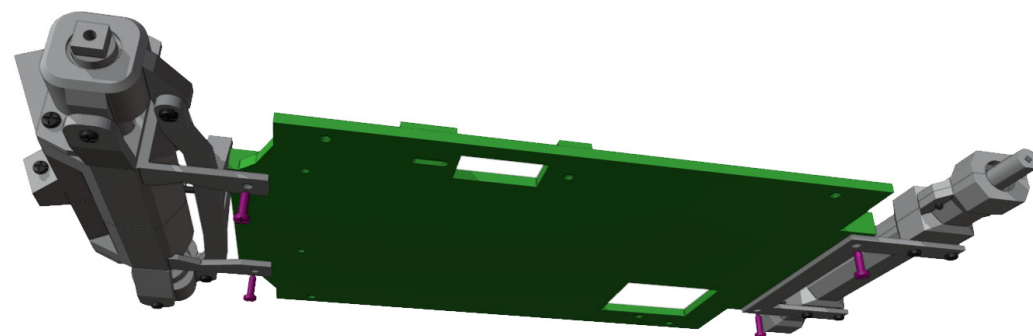
13

 4x M1x3



15

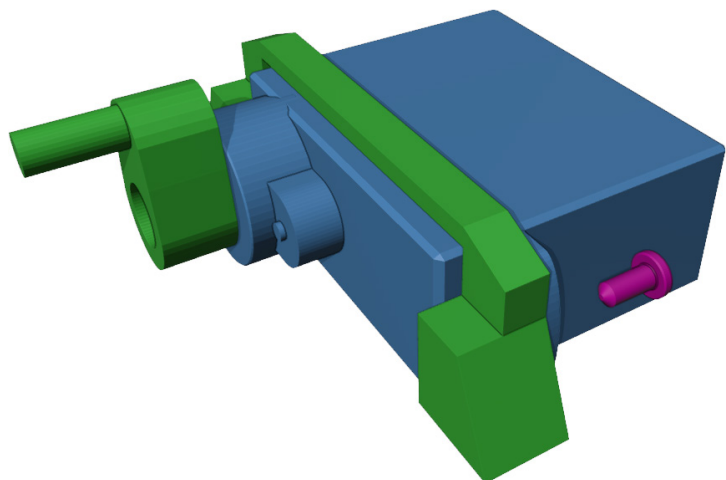
 4x M1.2x4



Bearings 3x6x2.5 should fit quite firm to axle. If necessary, you can again use sandpaper.



Steering ping have to be very tight so it won't slip during steering.

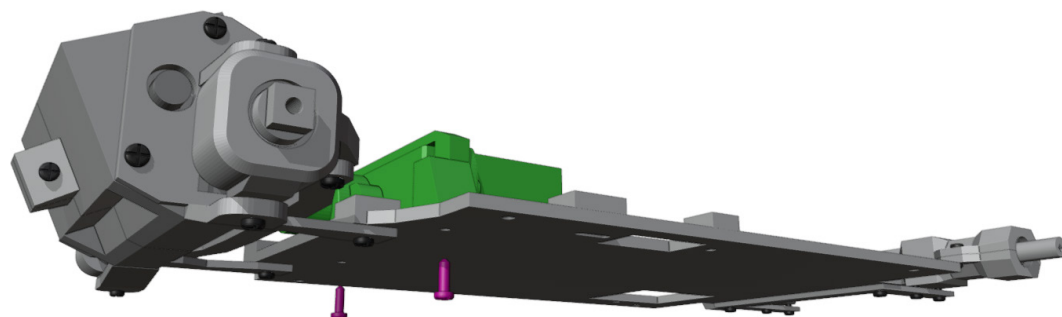
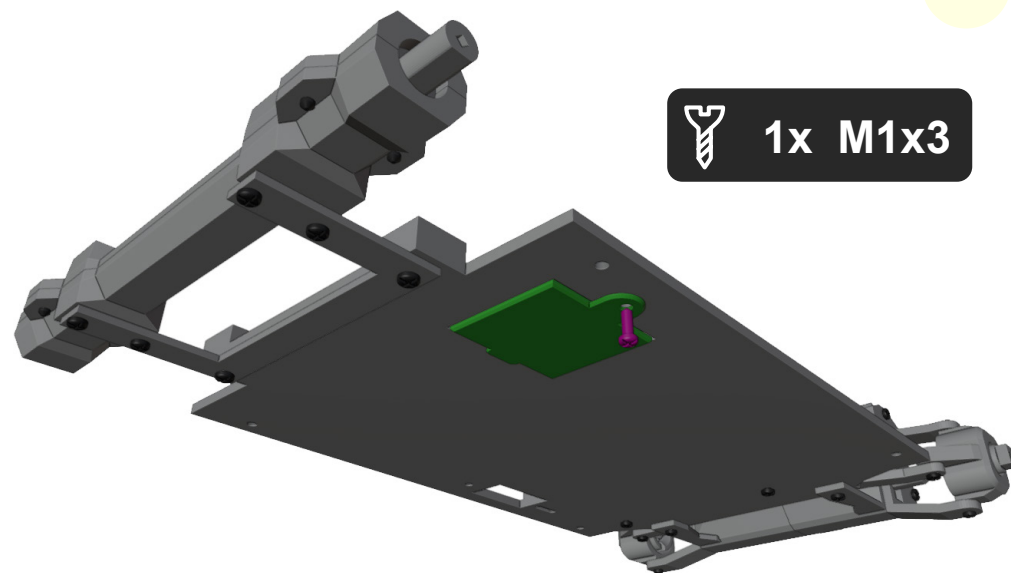


16

18



1x M1x3



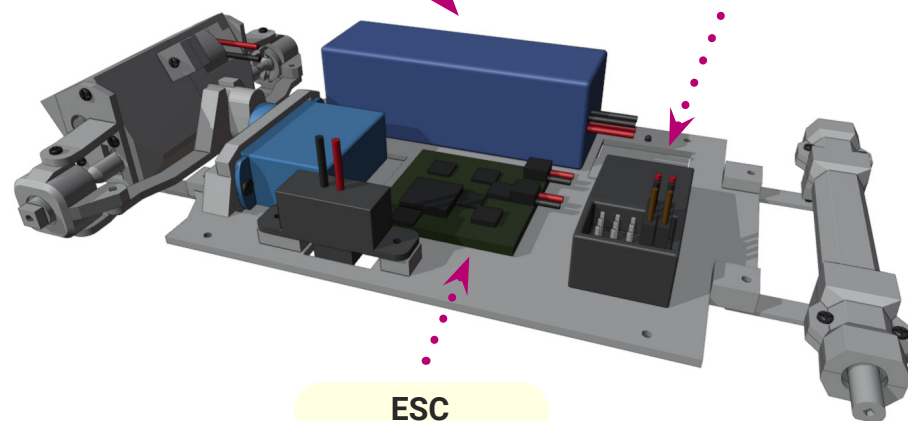
2x M1x5

17

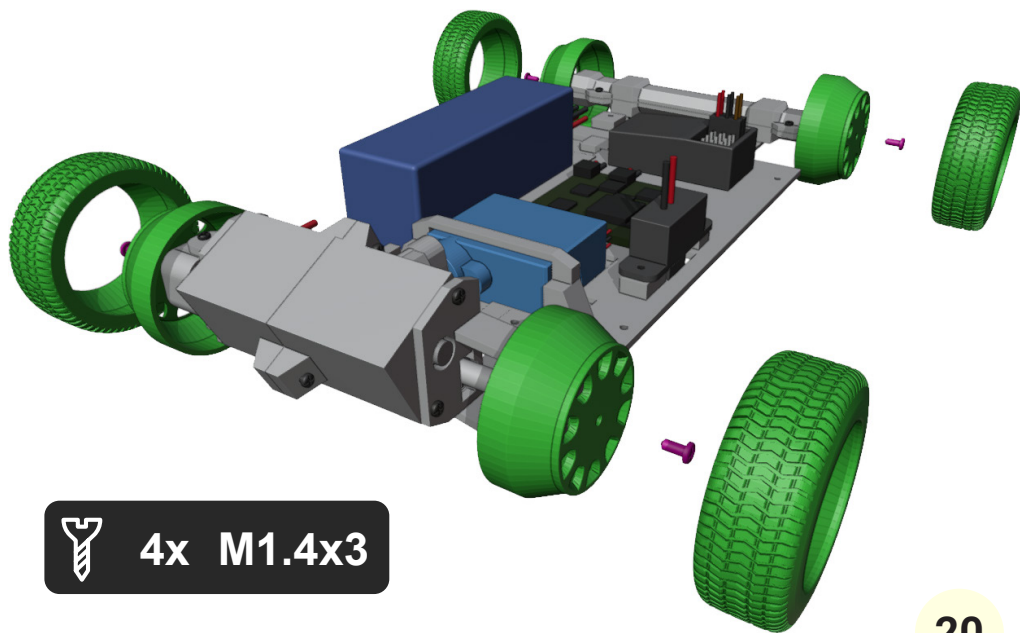
Battery

Receiver

ESC

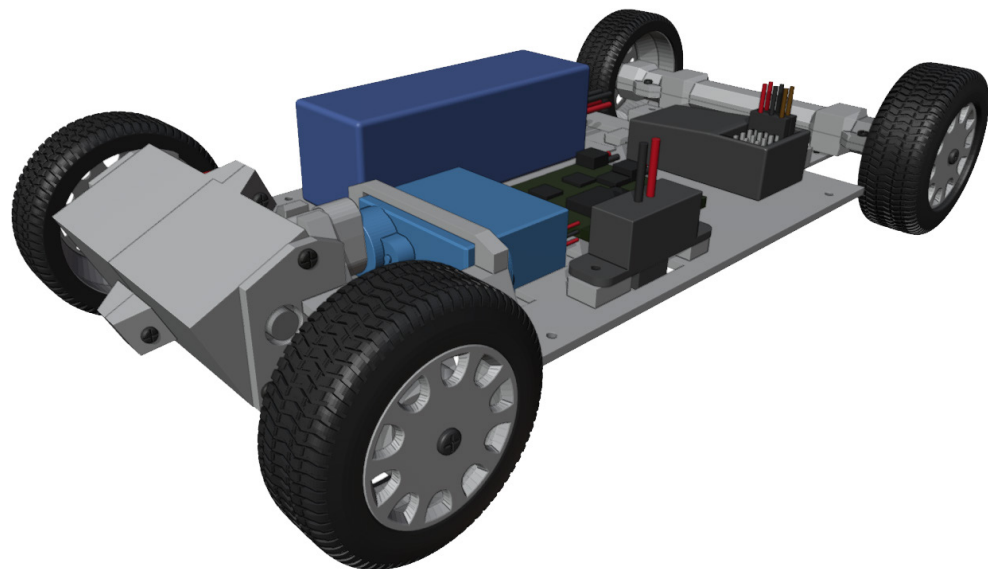


19



**Great job!**

The chassis is done!  
Now let's do the body.

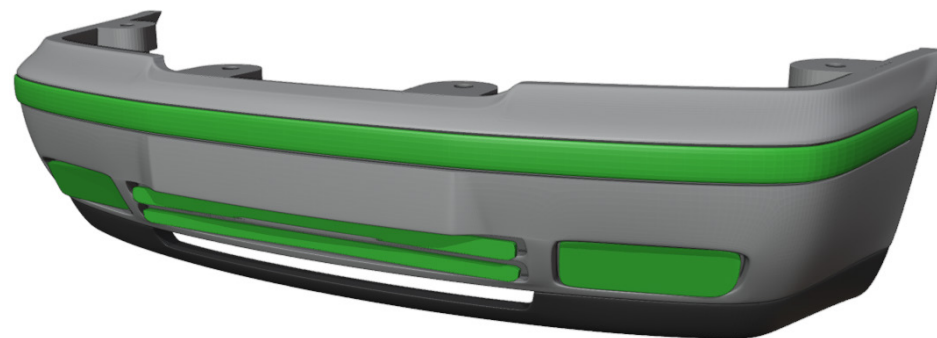




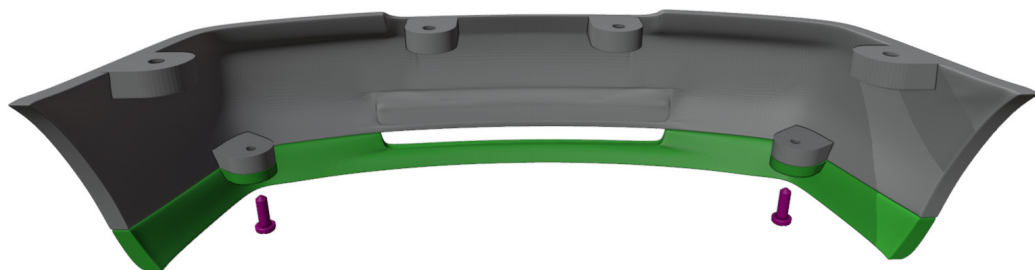
1



4x M1x5



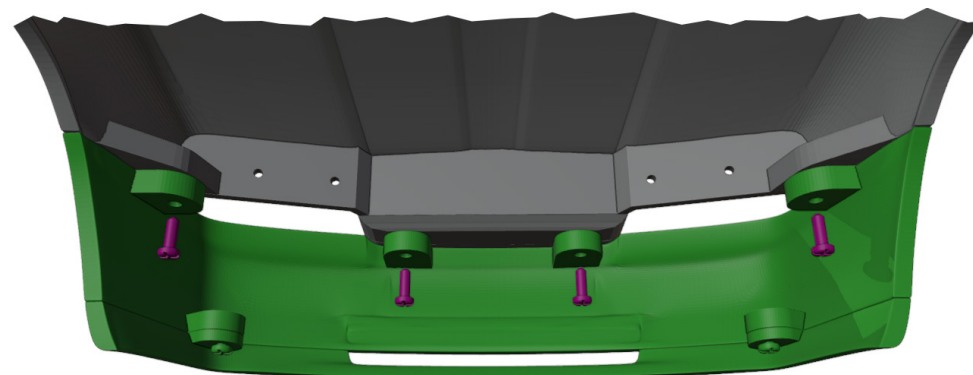
3



2



2x M1x4



4



4x M1x4

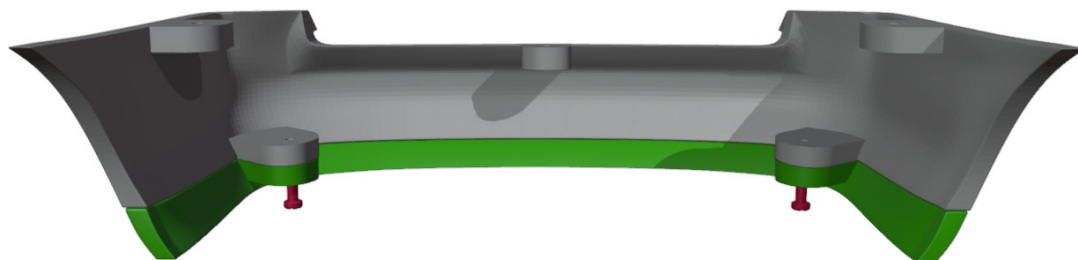


5



7

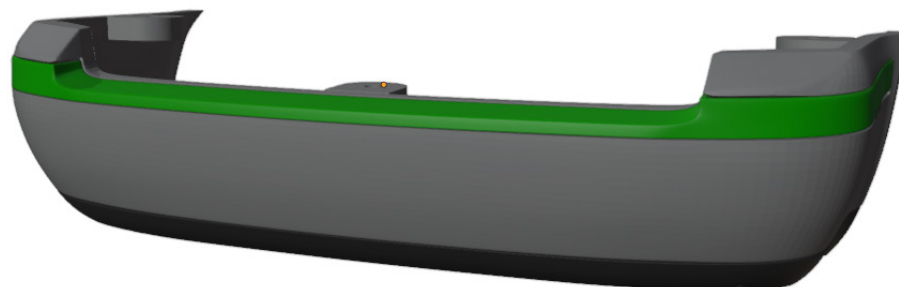
 2x M1x4



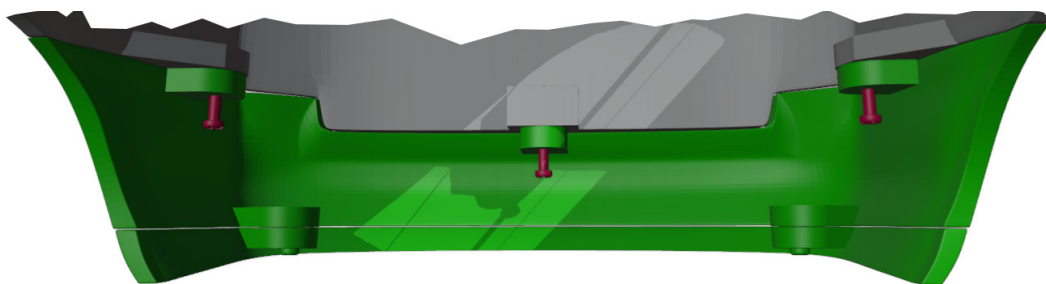
6



8



 4x M1x4



9



11



10

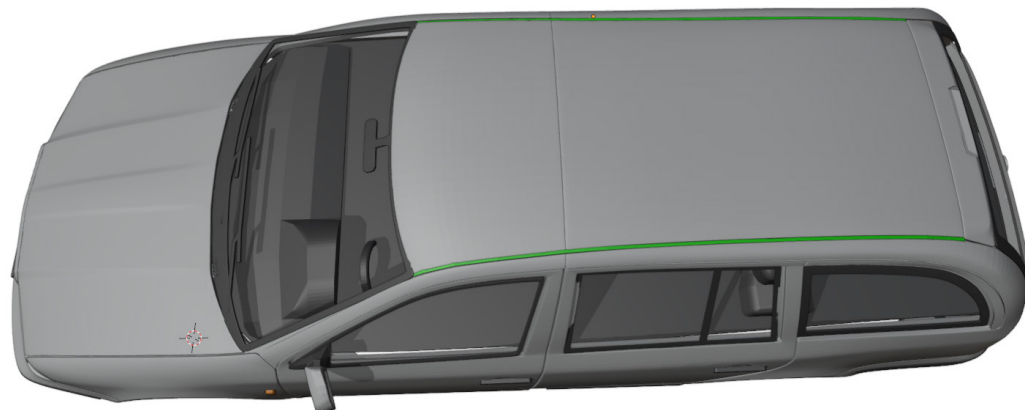


12

13



15



14



**Great job!**

We are done...

For more models, visit:

**[www.3drcmodels.com](http://www.3drcmodels.com)**

