

Tow truck

Fully 3D printed on FDM with extra functionality



More models at:

www.3drcmodels.com

Non printed parts

Screws

5x M2 x 20mm

37x M2 x 6mm

23x M2 x 12mm

10x M2 x 10mm (philips)



** These are just recommended screw/bolt lengths. Similar M2 can fit too.*

Bearings

6x 7x11x3



** If you want to build car as RC, you will need 1 extra 7x11x3 bearings.*

Magnets

6x 10mm x 1.5mm



** Use neodymium magnets. They are strong and can handle more stress.*

RC electronic ** Optional if you want to have it as RC*



2S ESC

** No fancy ESC required.*



6V DC Motor

** max 400 RPM*



2S Lipo battery

** Around 400mAh is more than enough.*



RC Set

** Just basic RC set will do the job*

Prologue

Thank you

Thank you for supporting my hobby by buying this model. I had great time designing this kit and I hope you will have same building it and playing with it. Thanks to larger scale, it's really nice kit to build with your kids so give them screwdriver and let them have fun too.

More models can be found at
www.3drcmodels.com

Warning!

Please be careful! Kit contains lots of small parts that can be swallowed by infant. Even after build is finished, small parts can be ripped off and can be dangerous. Part of kit are also neodymium magnets that are very strong and swallowing them can cause serious health issues! I don't recommend giving this toy to kid younger 3 years.

1. Chassis

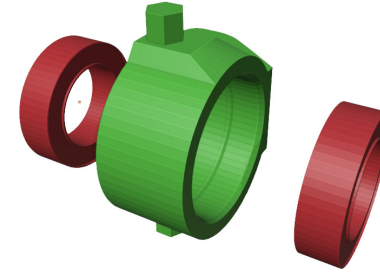


1.a. Front axle



4x 7x11x3mm bearings has to fit tightly

1

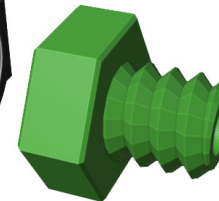
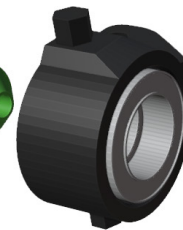


2x

2

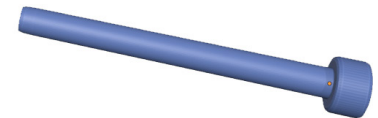


Shaft has to fit tightly

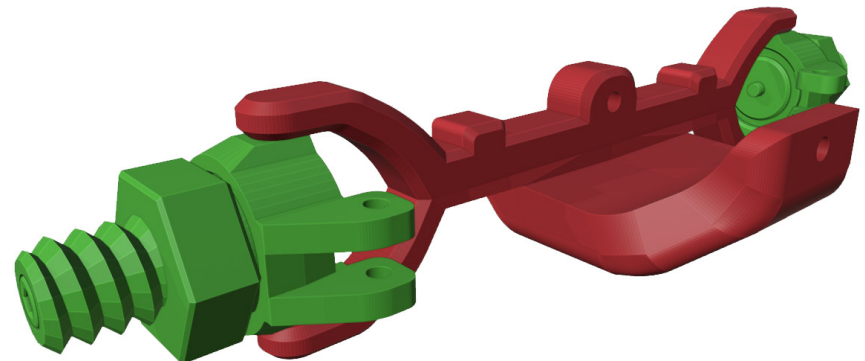


2x M2x20

2x

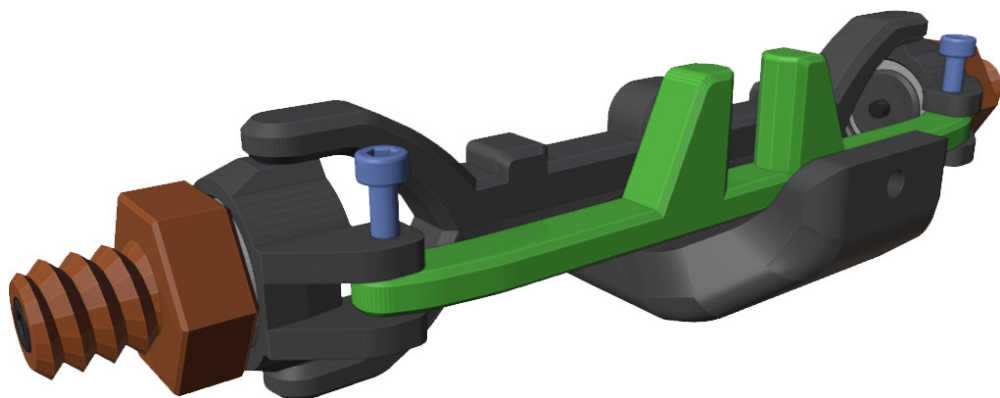


3



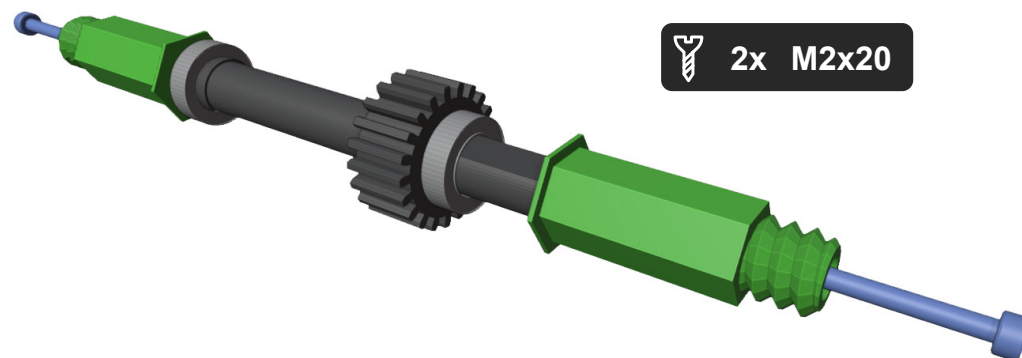
4

2x M2x6



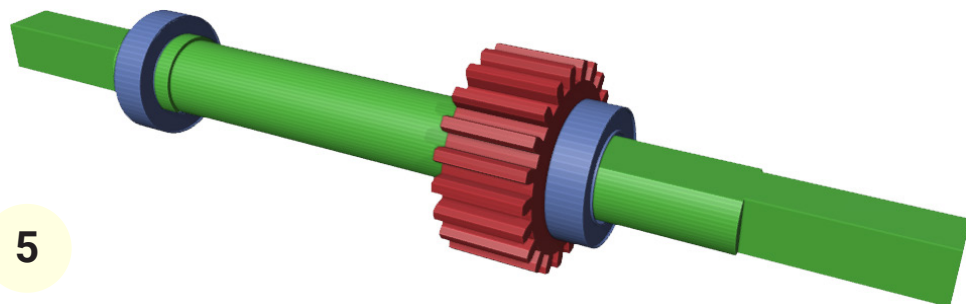
6

2x M2x20

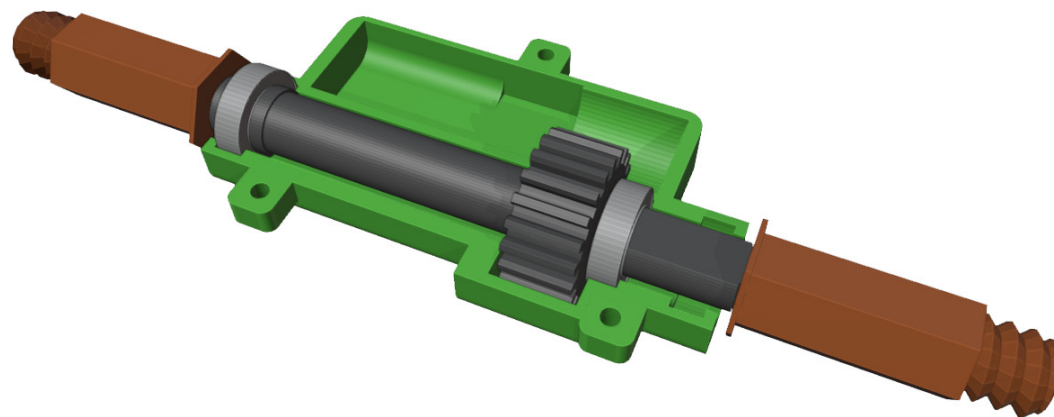


1.b. Rear axle

5

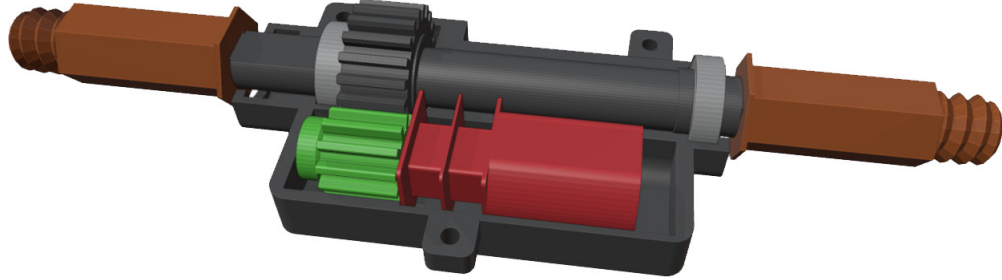


7



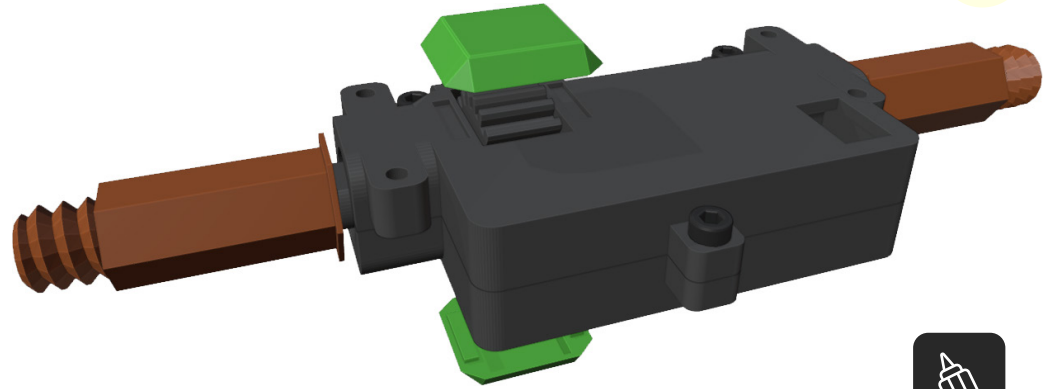
4x 7x11x3mm bearings has to fit tightly

8



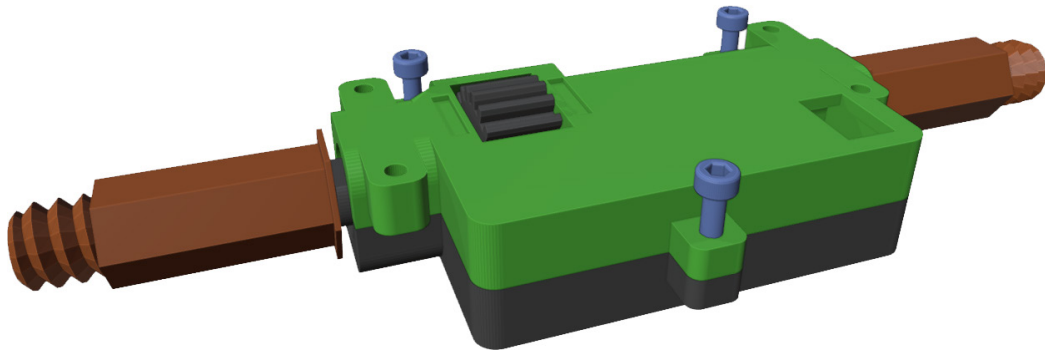
This is optional. If you don't want to add RC, skip to step 9

10



9

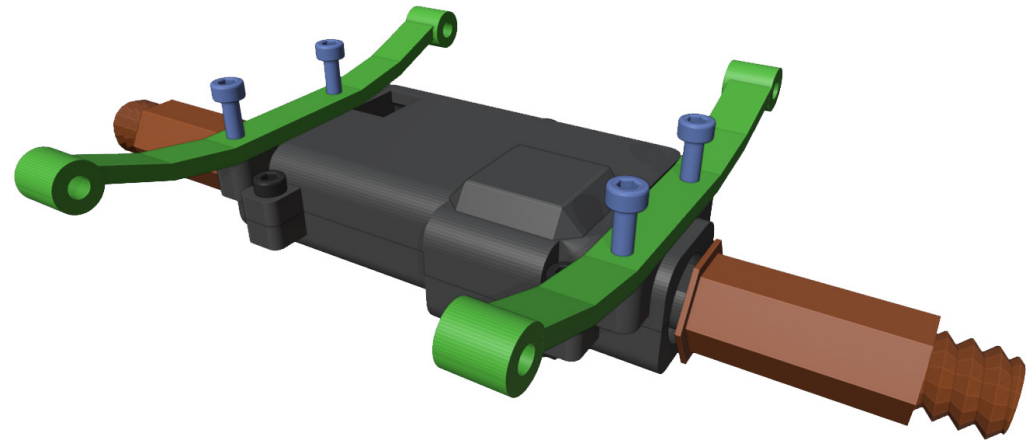
3x M2x6



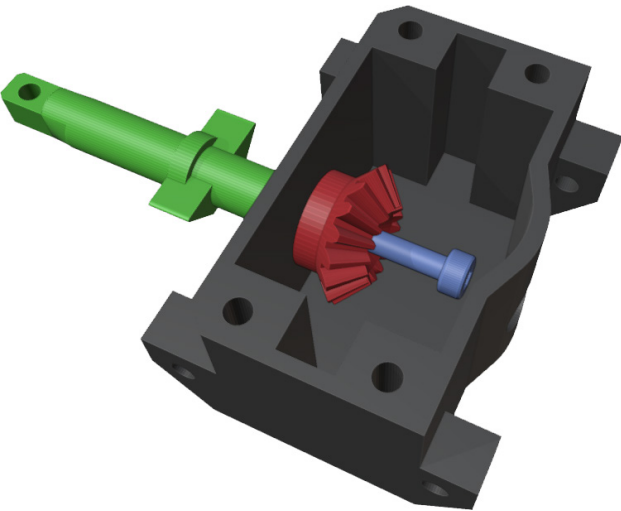
Make sure axle spins freely.

11

4x M2x6



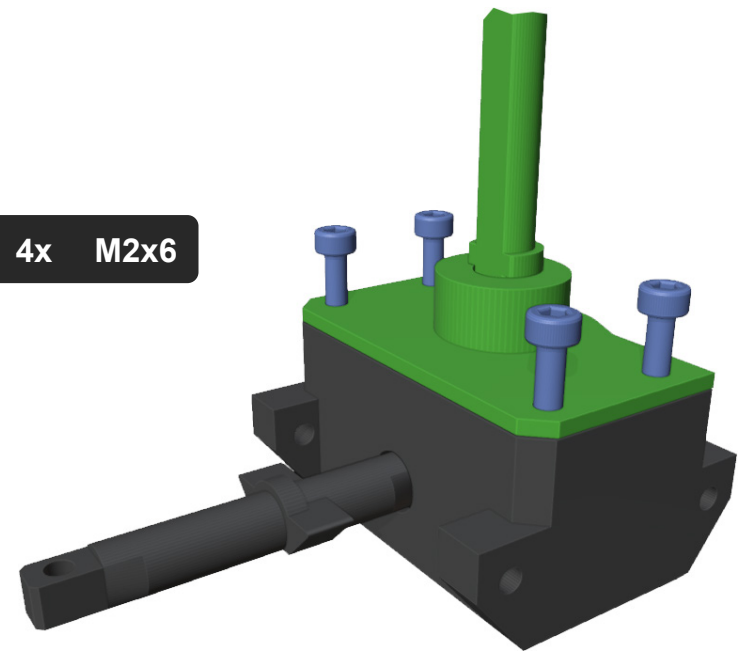
1.c. Steering gearbox



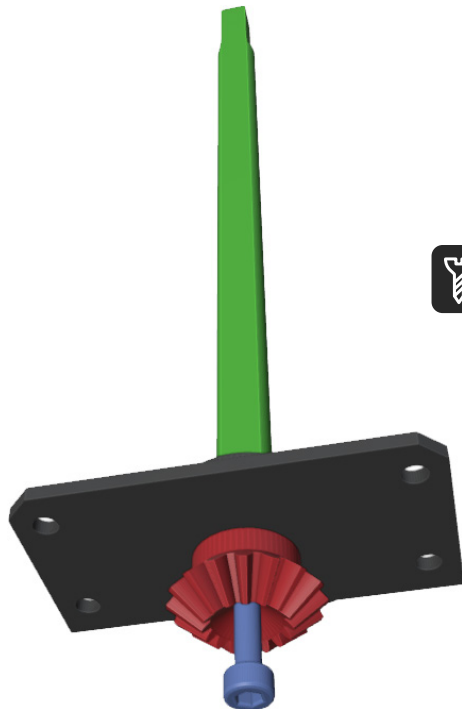
12

1x M2x6

4x M2x6



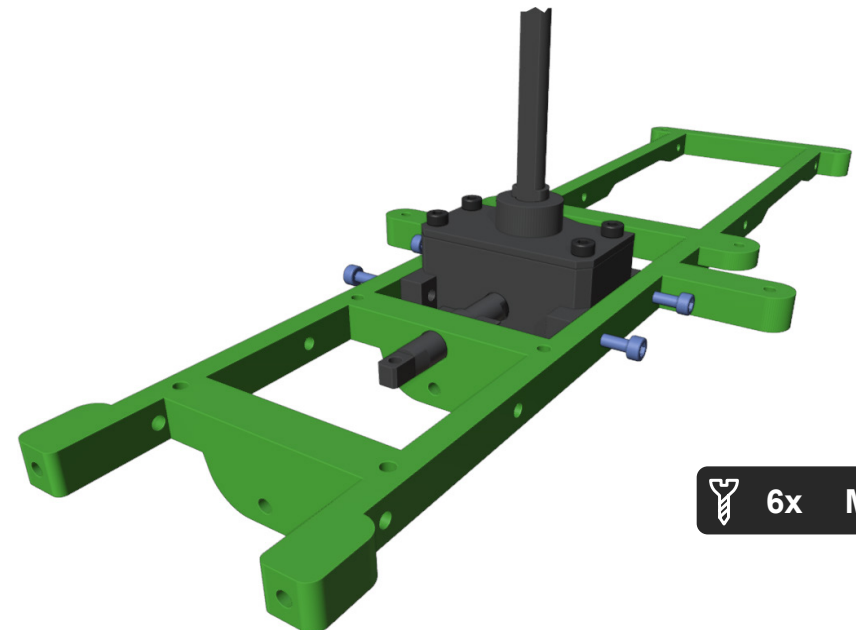
14



13

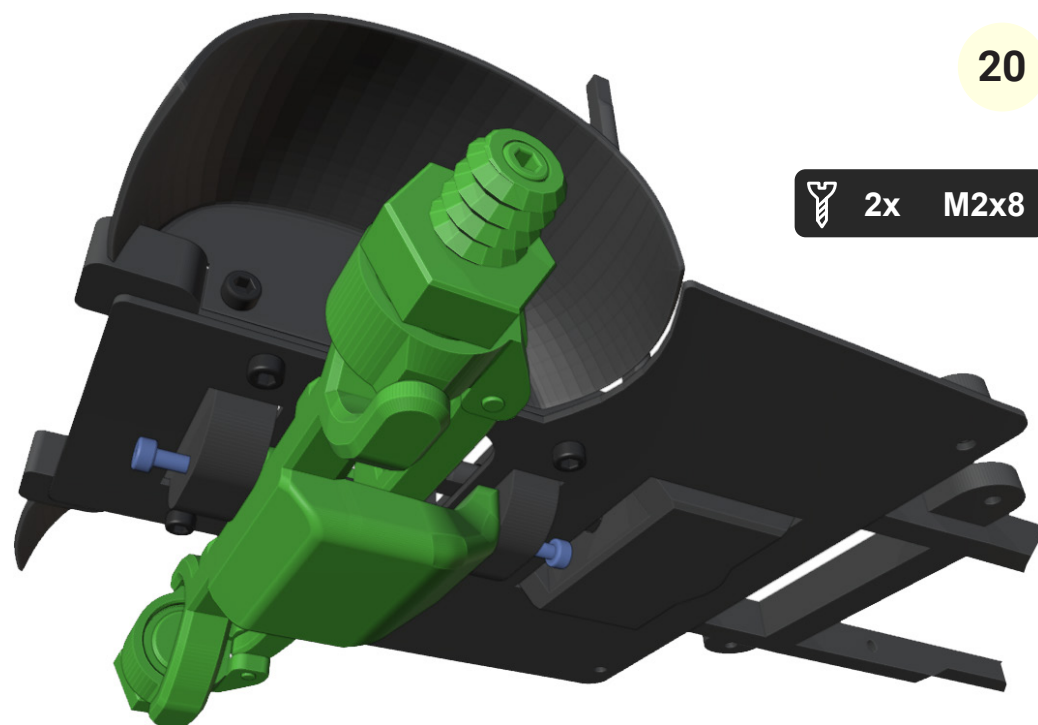
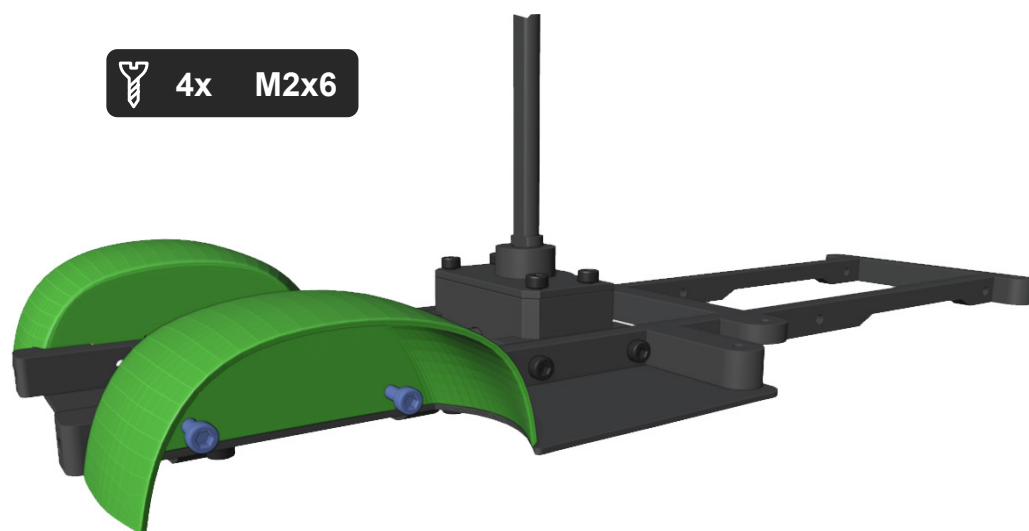
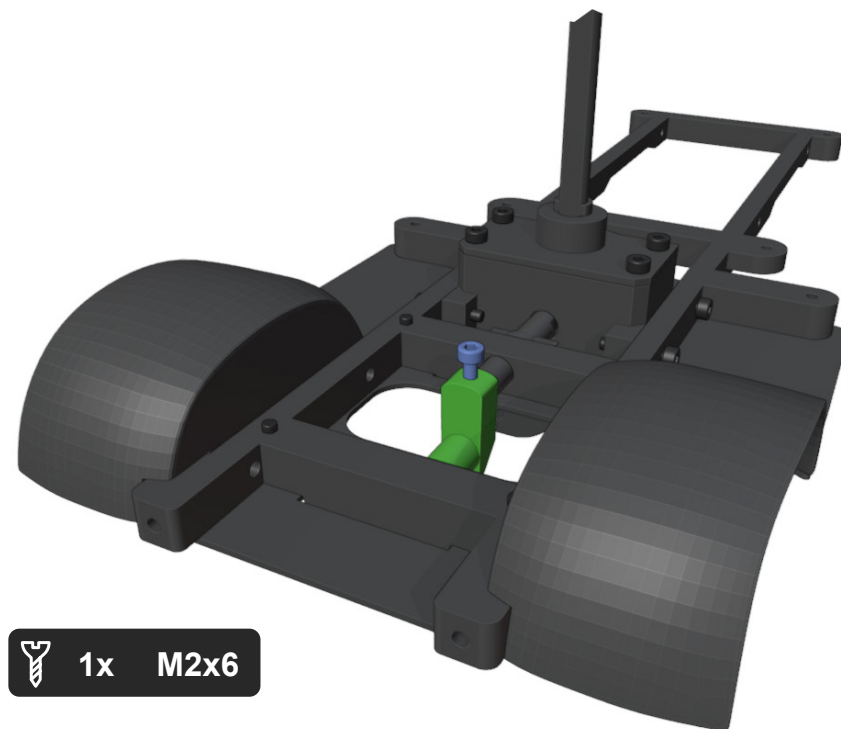
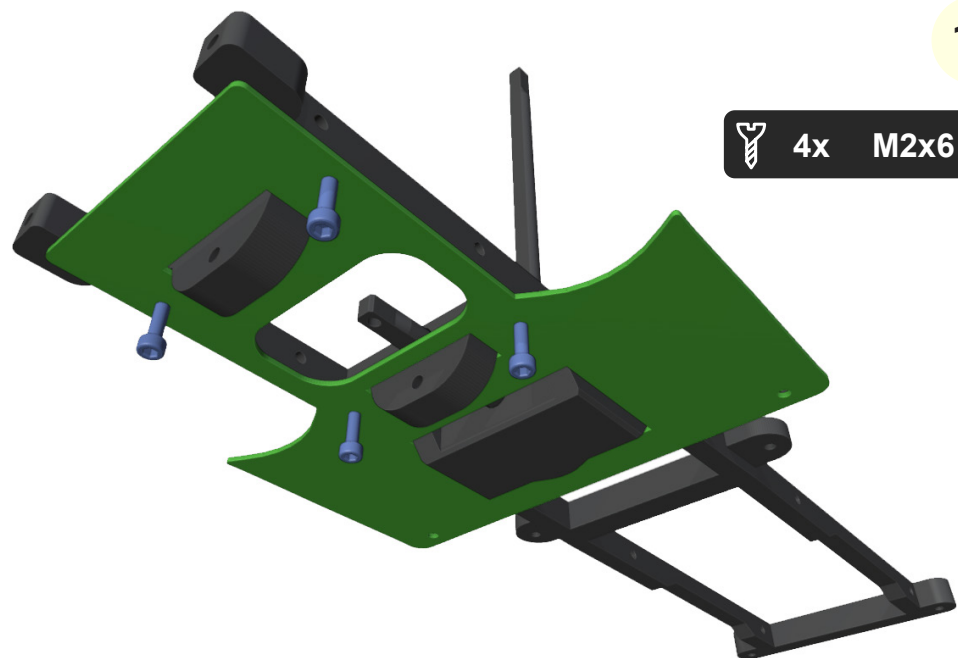
1x M2x6

1.d. Main frame / Completion

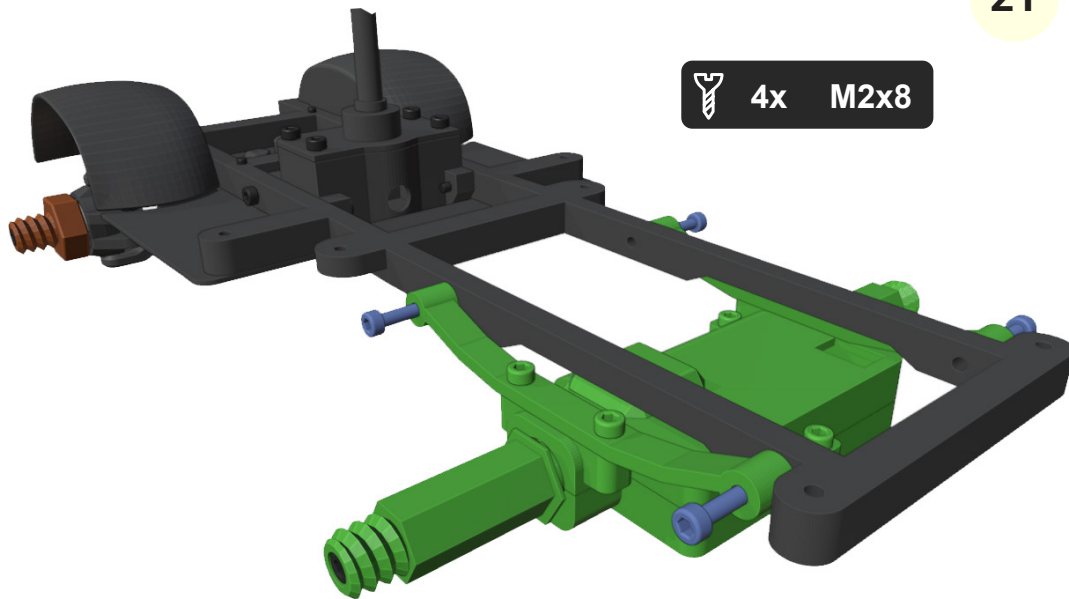


15

6x M2x6

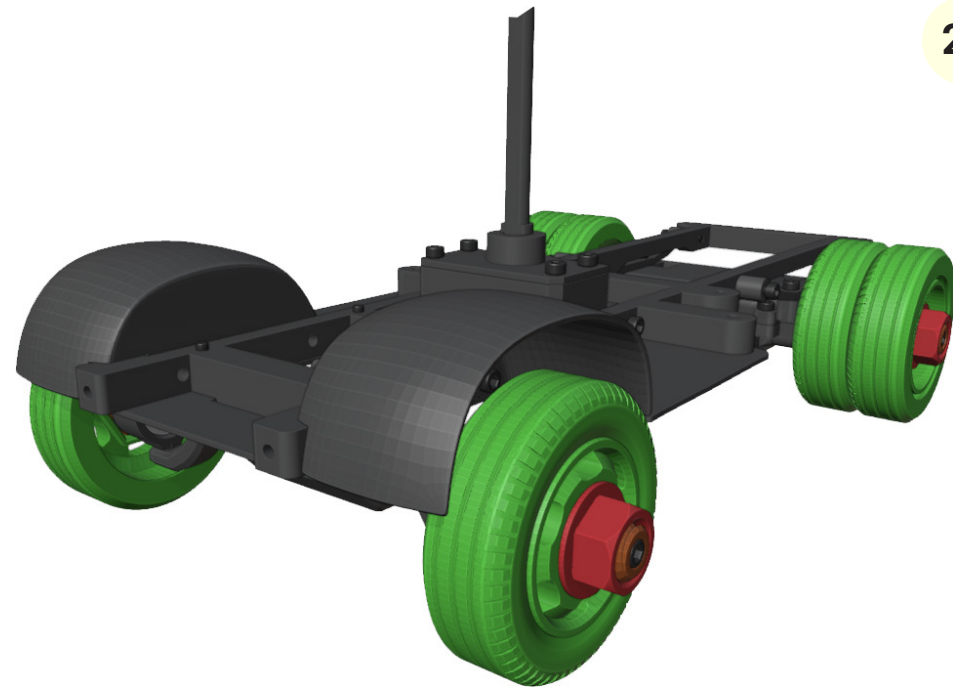


21

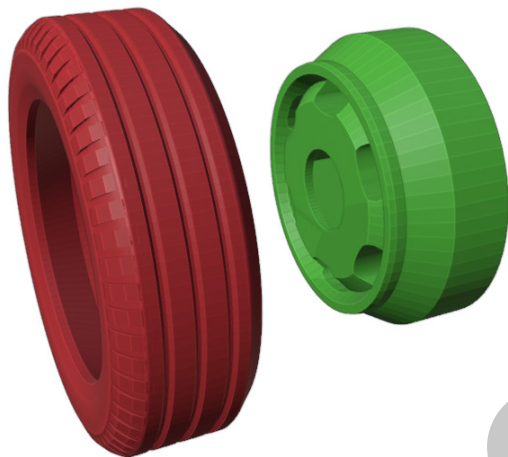


4x M2x8

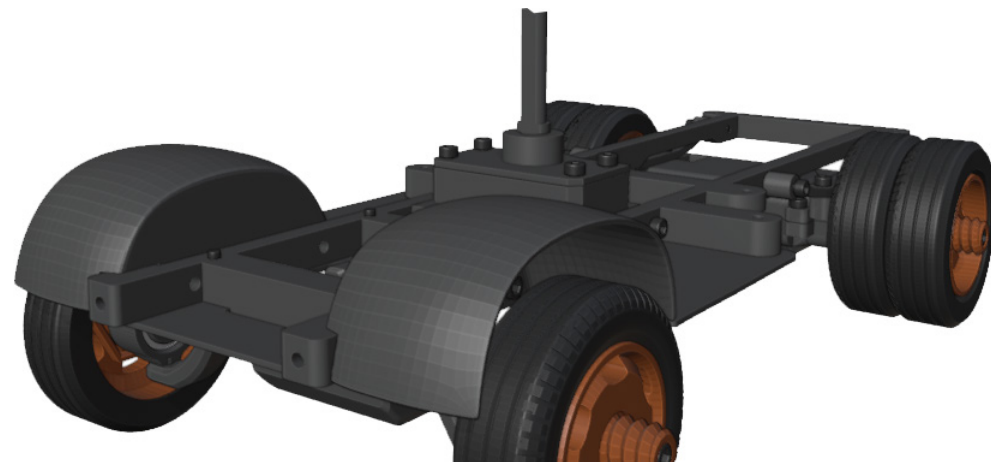
23



22



6x



Great job! Chassis is done! Now let's do a body.

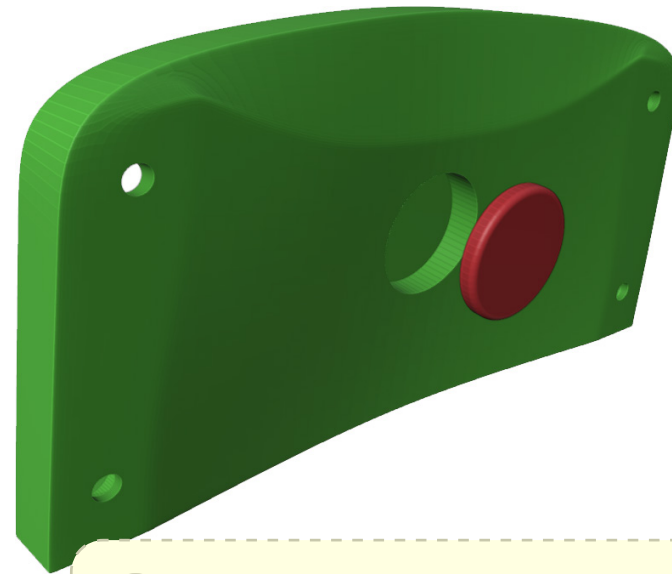
2. Body



2.a. Front body



1



2



Make sure magnet 10x1.5mm is well glued in position



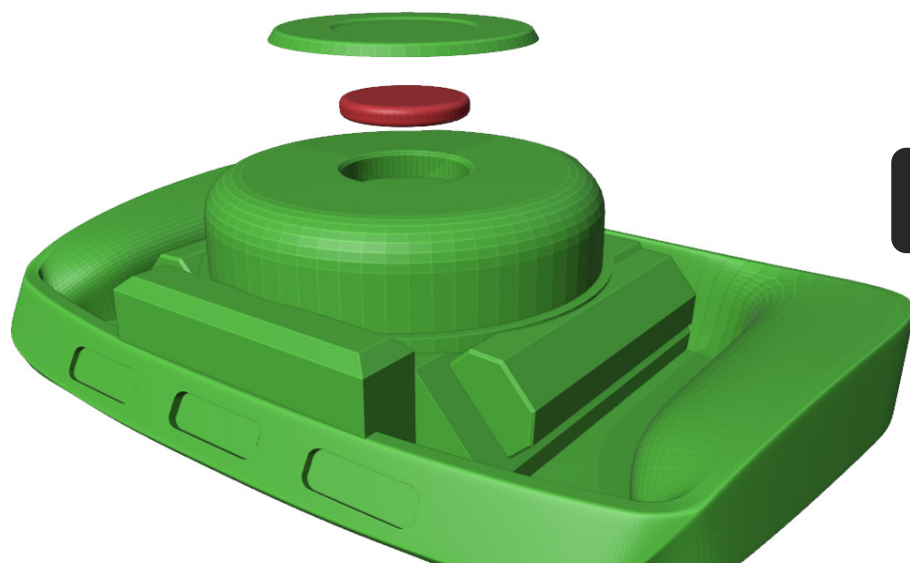
3

 4x M2x8



5

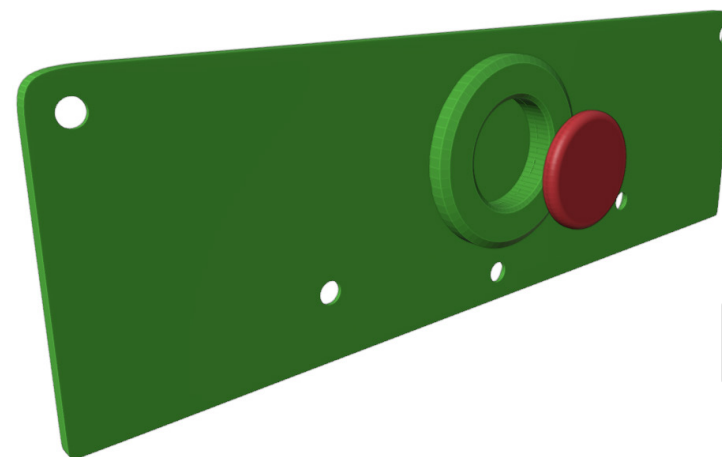
 3x M2x8



4



Make sure magnet 10x1.5mm is well glued in position



6



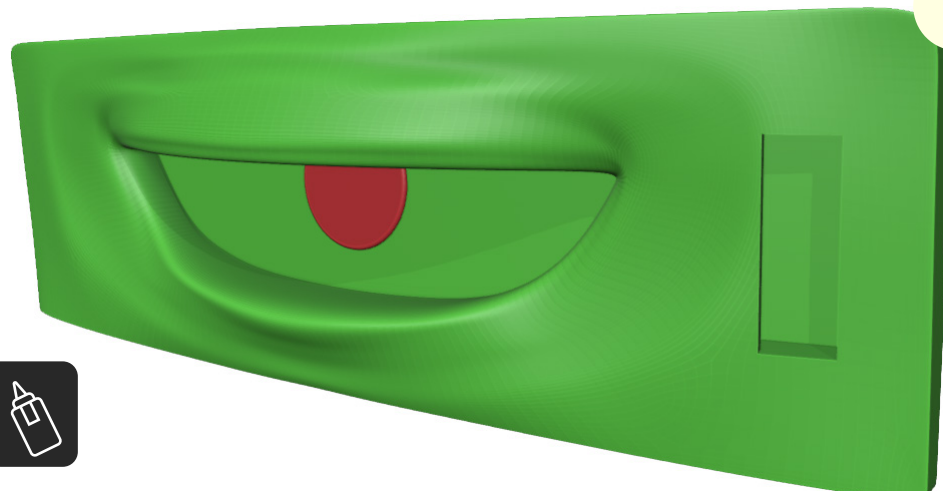
Make sure magnet 10x1.5mm is well glued in position

7



 3x M2x8

9



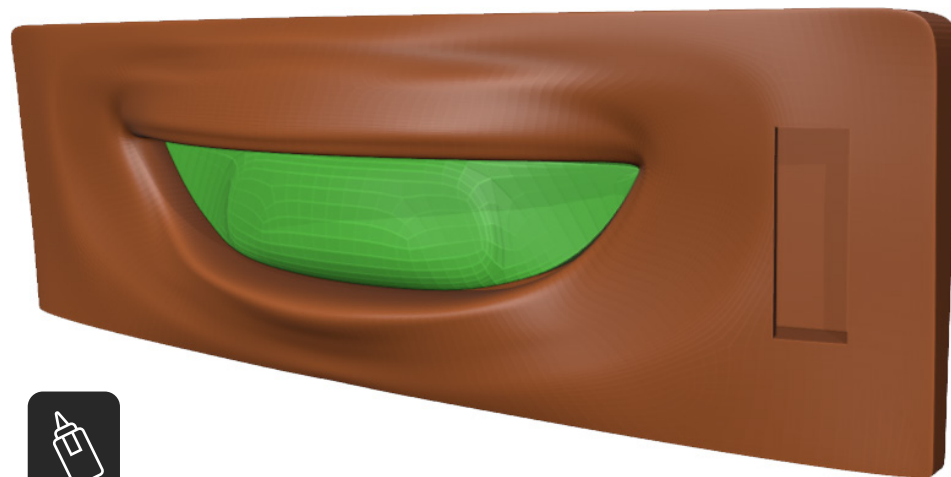
Make sure magnet 10x1.5mm is well glued in position.
Before gluing check polarity of magnets so it stick to body

8

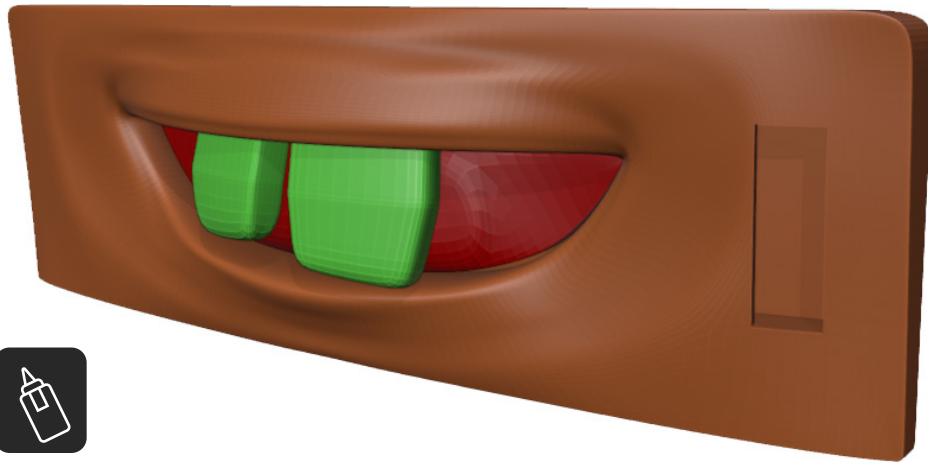


 2x M2x6

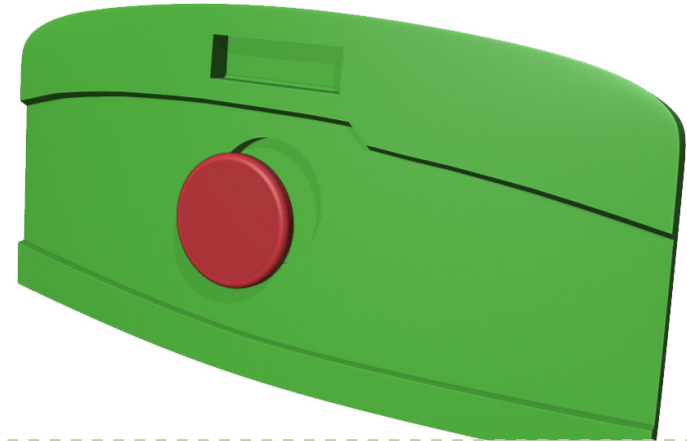
10



11



13

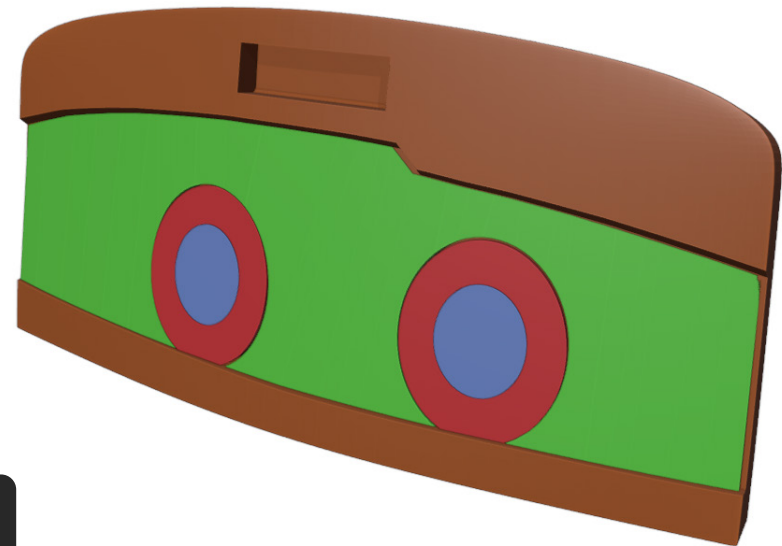


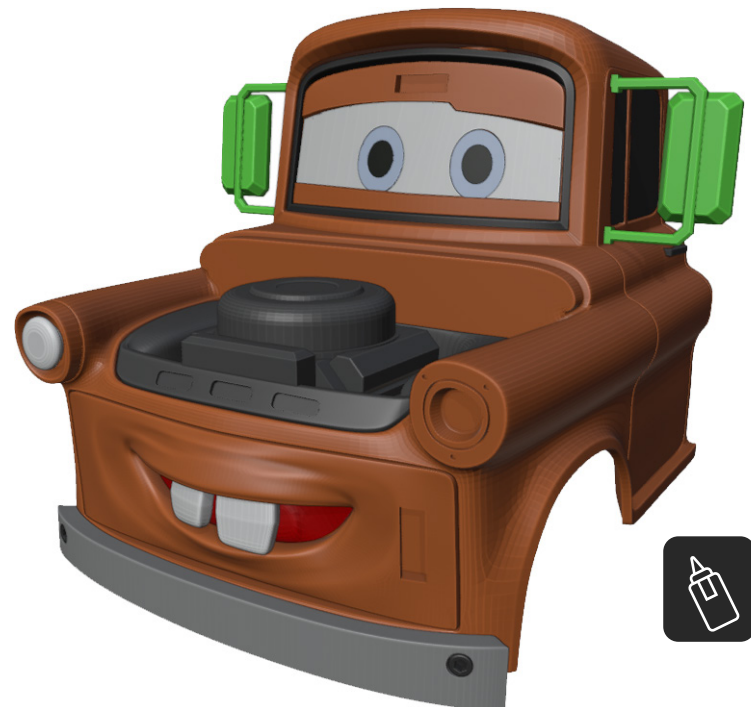
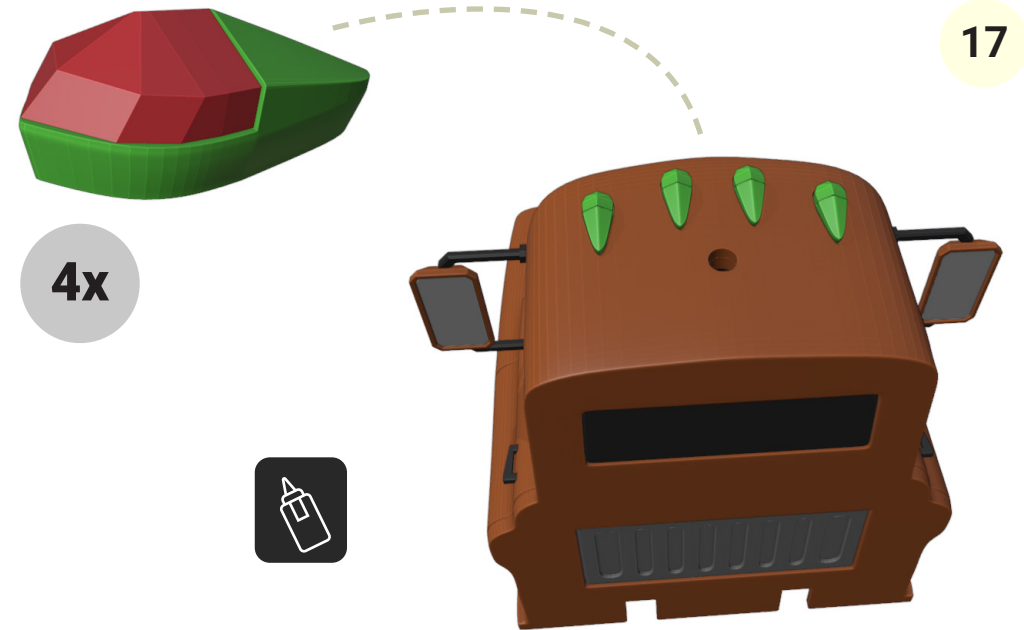
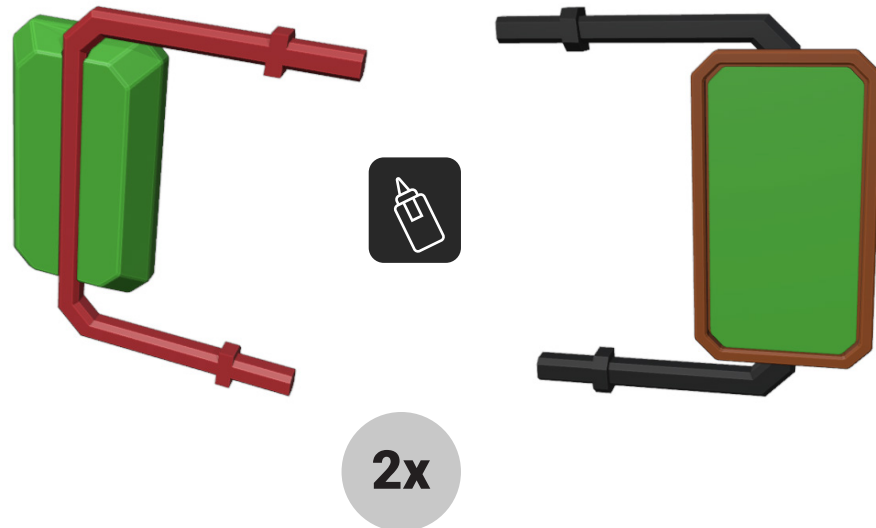
Make sure magnet 10x1.5mm is well glued in position. Before gluing check polarity of magnets so it stick to body

12

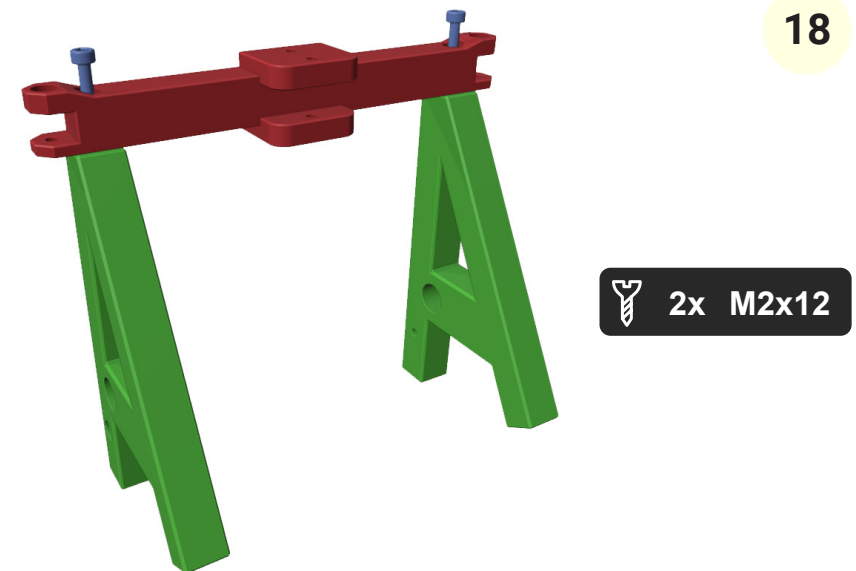


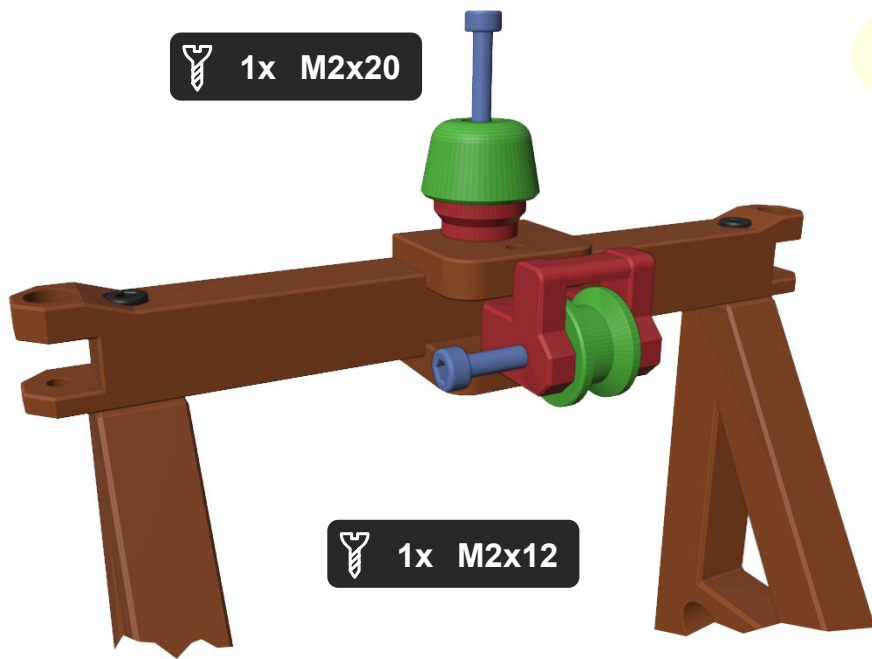
14



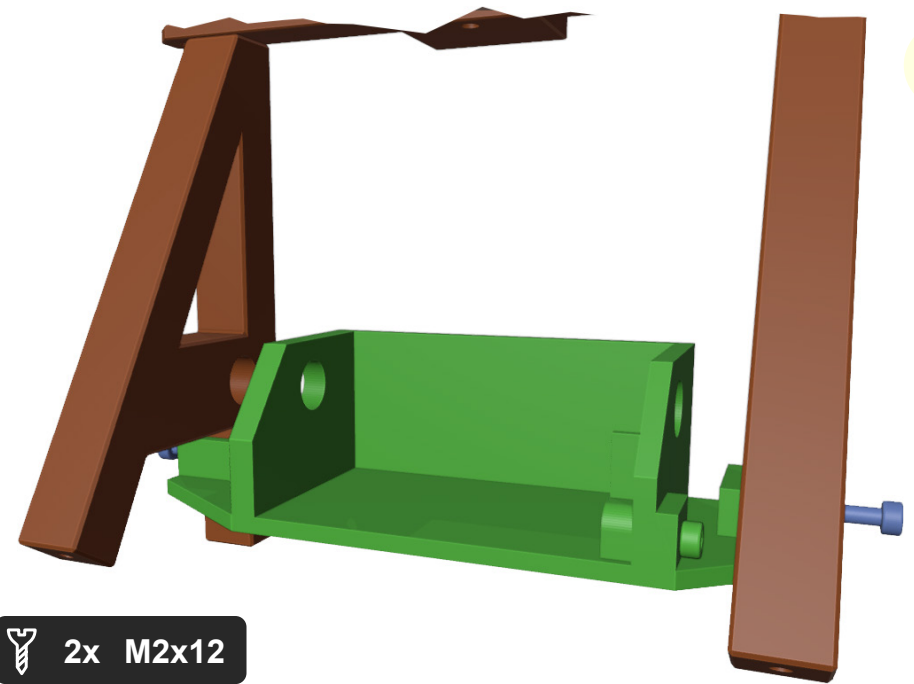


2.b. Rear body

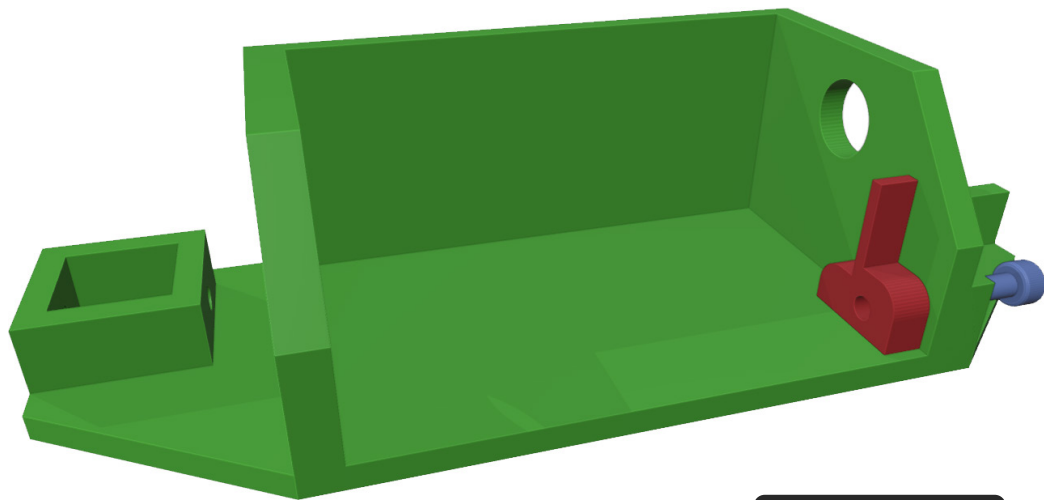




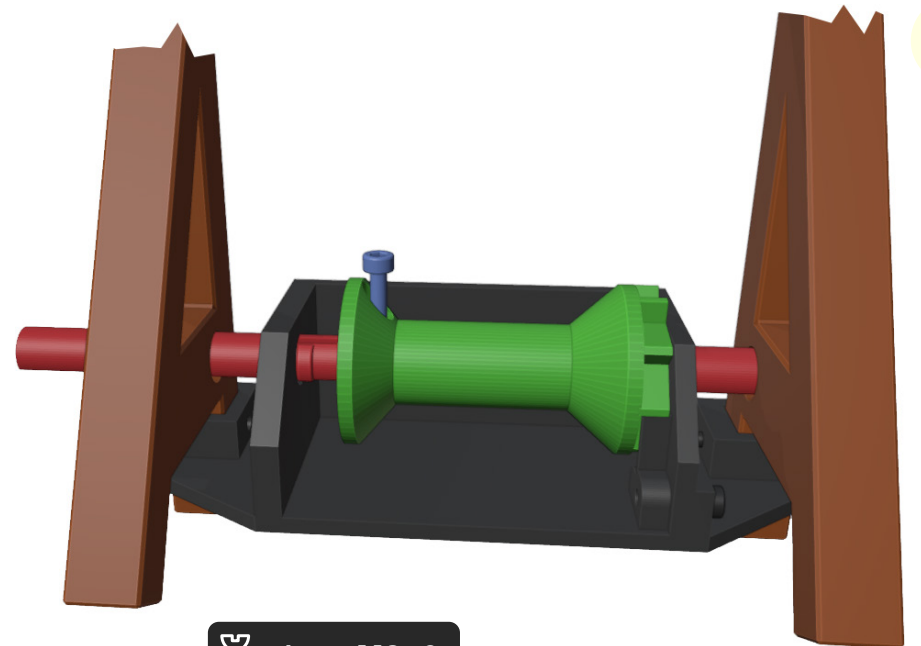
19



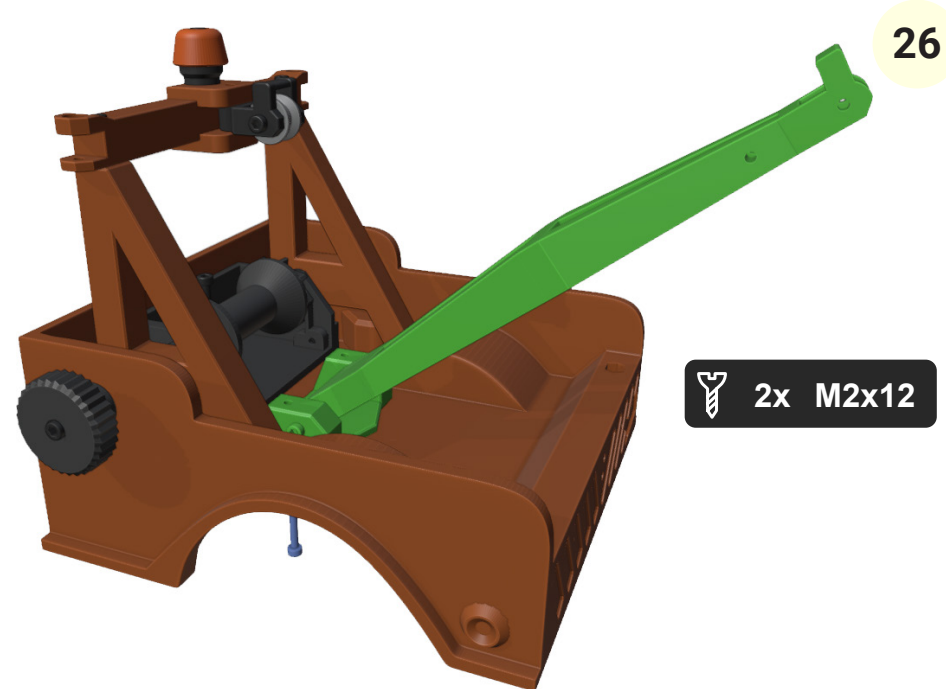
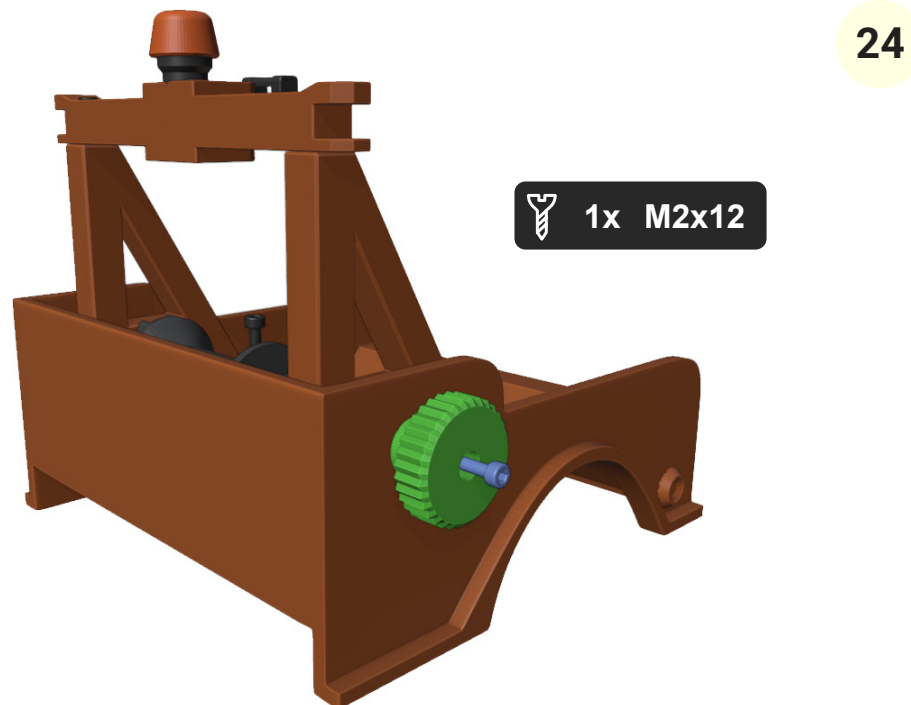
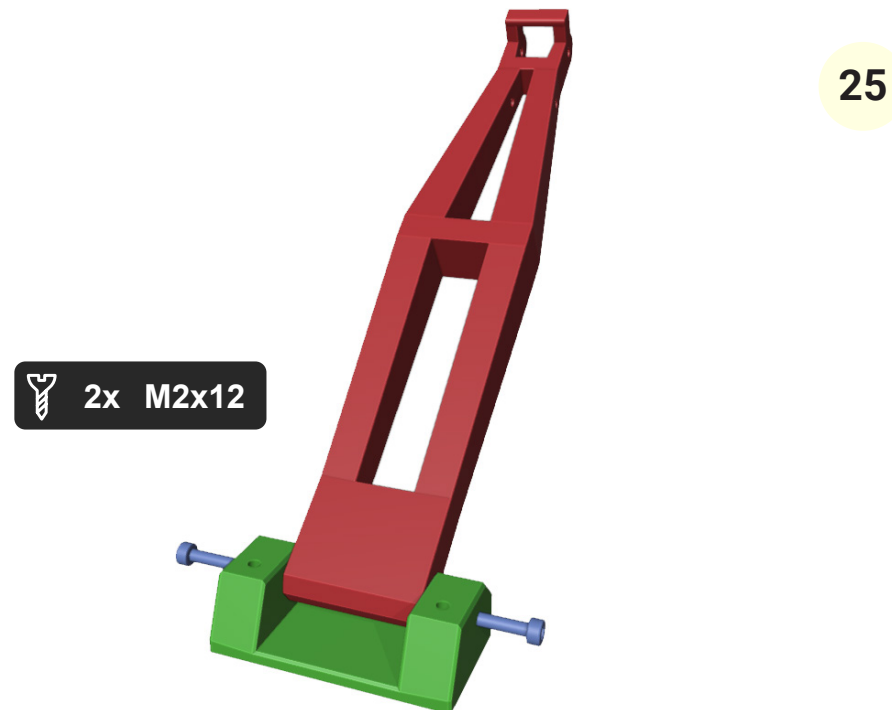
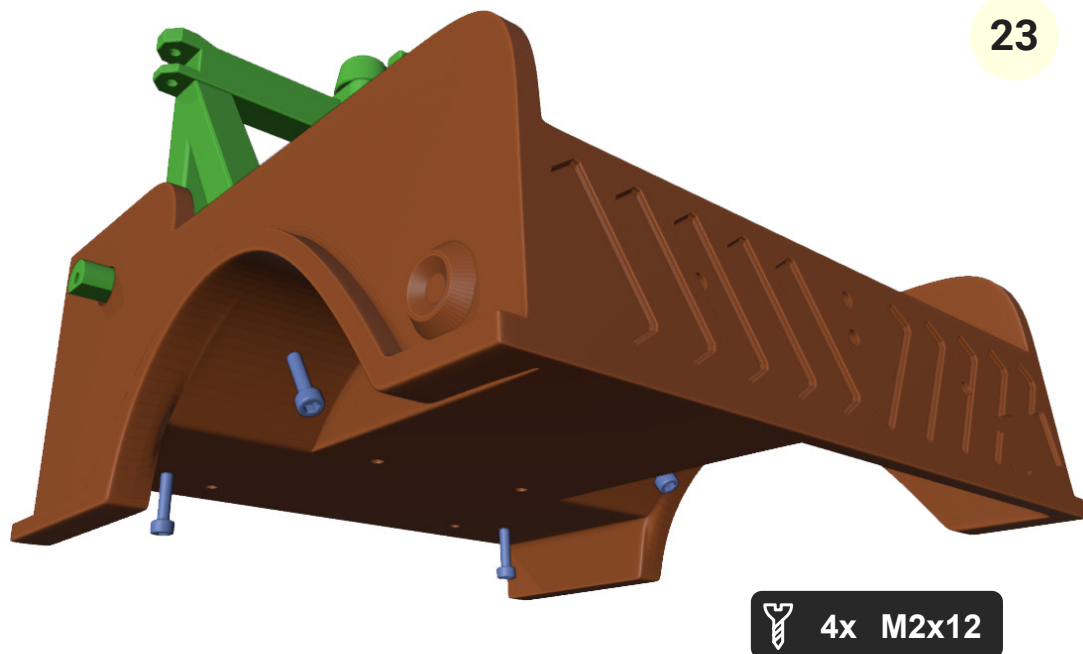
21

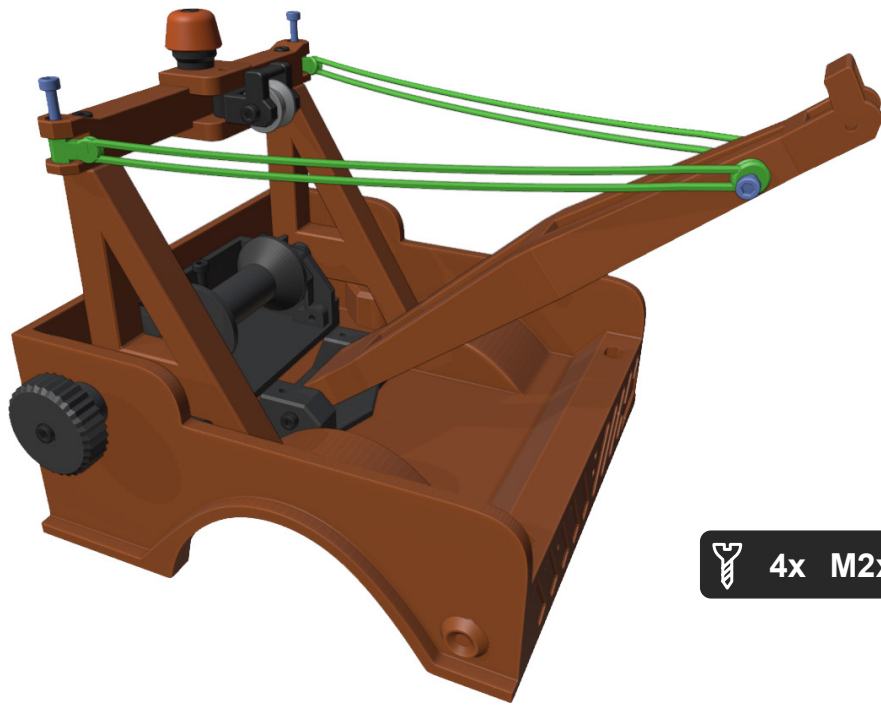


20



22





27

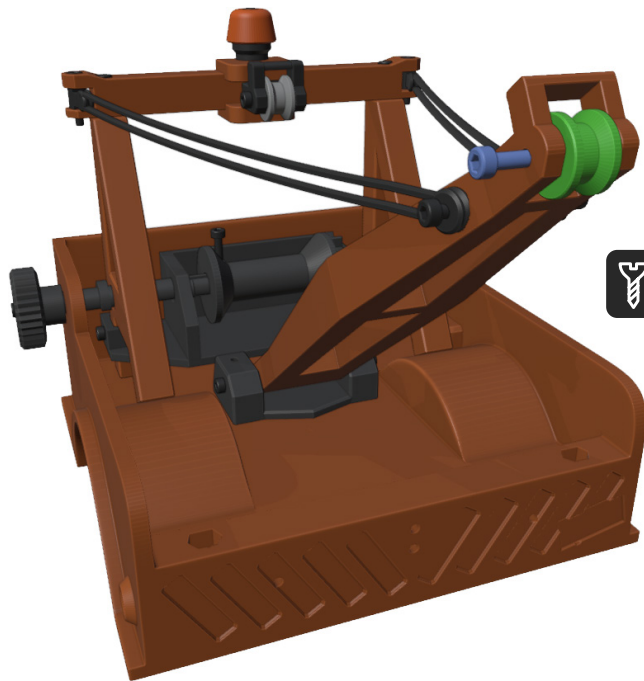
4x M2x12



29

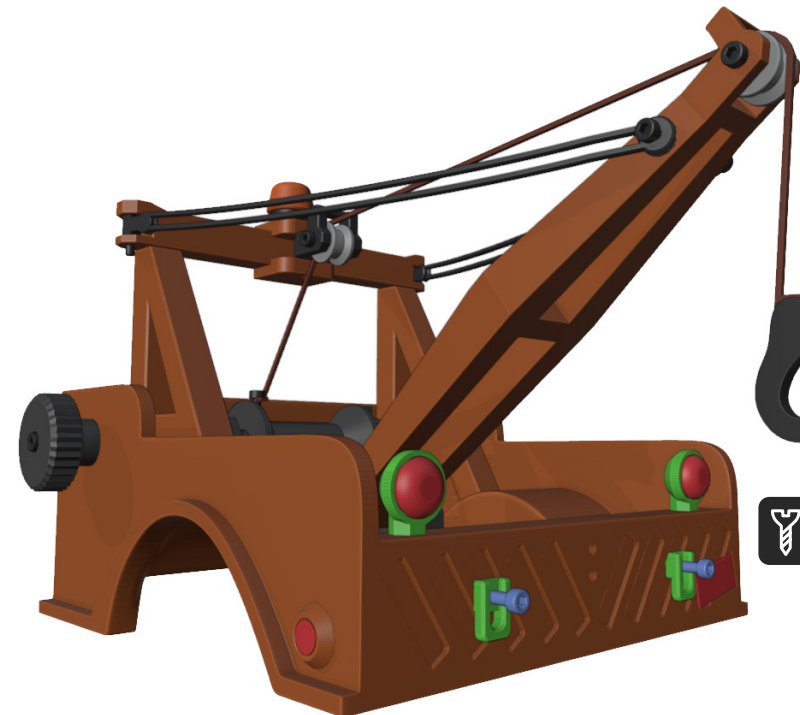


Tie the rope to screw and then screw it all the down. I recommend to use 1mm rope soft as possible.



28

1x M2x12



30



2x M2x6

31



4x M2x12

33



1x M2x12

32

4x M2x12



Great job!

We are done...

For more models, visit:

www.3drcmodels.com