

RC Škoda Octavia 1 Combi

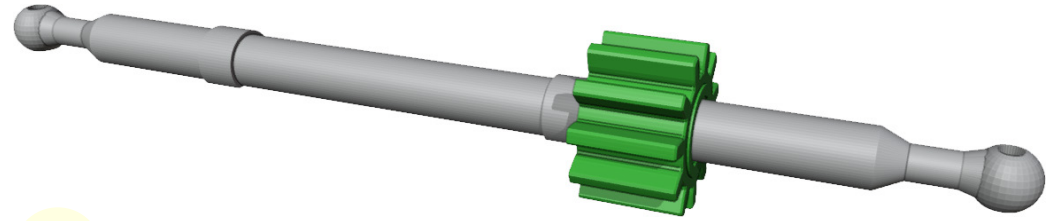
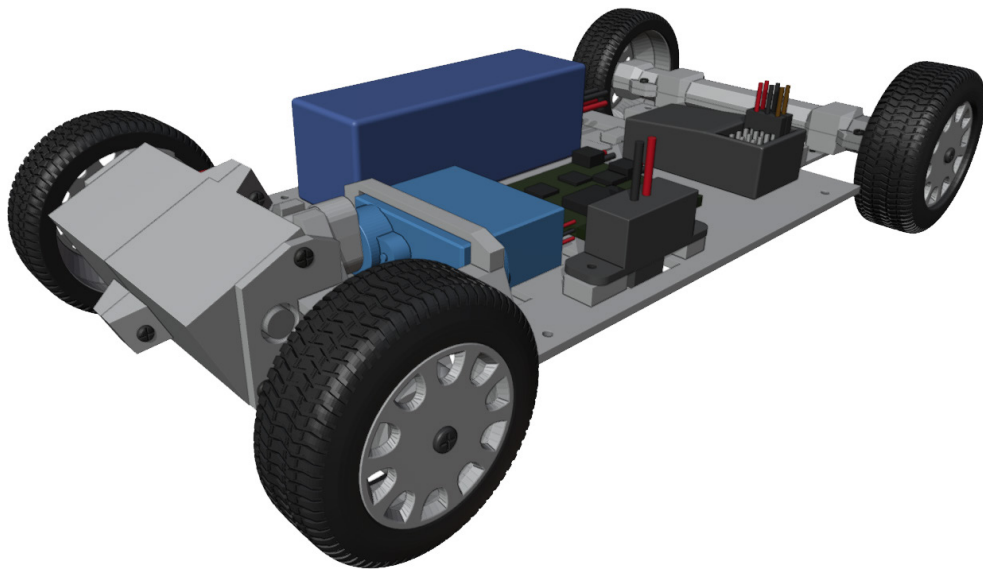
1:24 scale, fully 3D printed on FDM



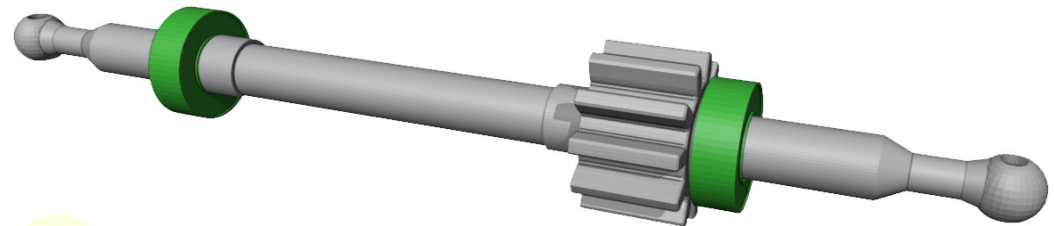
More models at:

www.3drcmodels.com

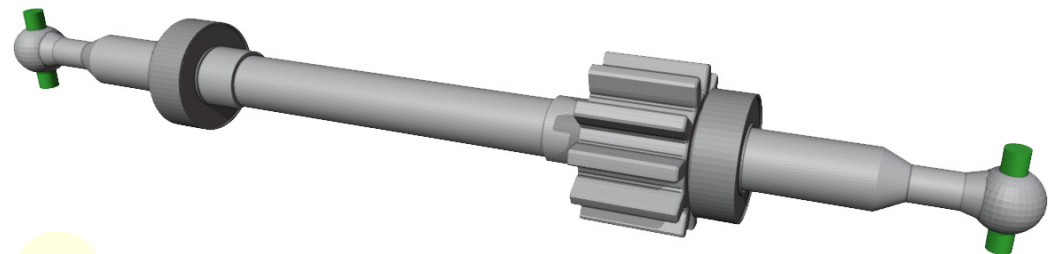
1. Chasses



1



2

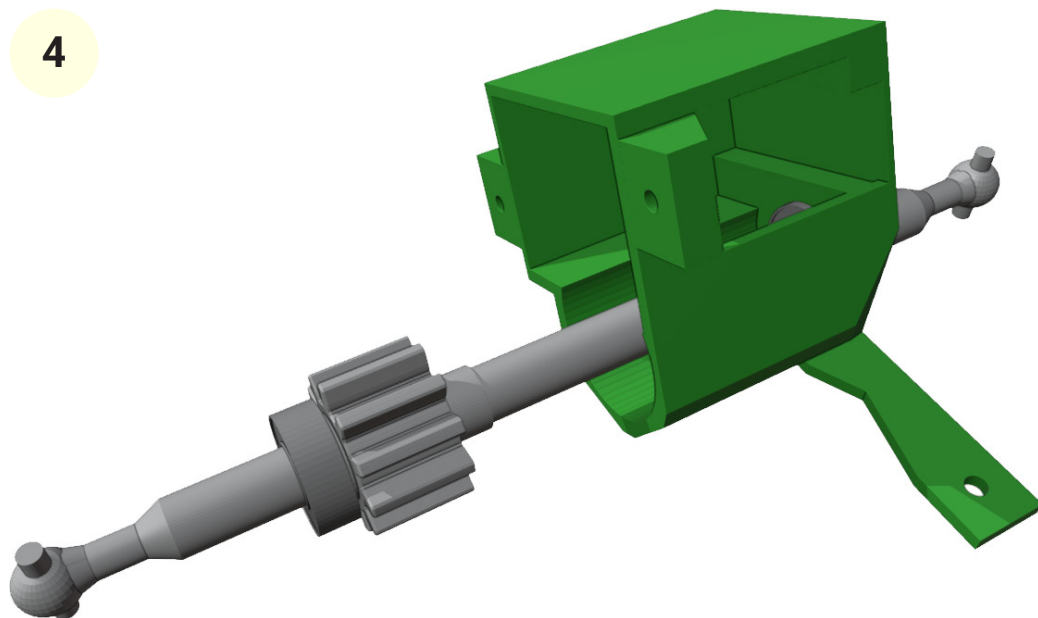


3

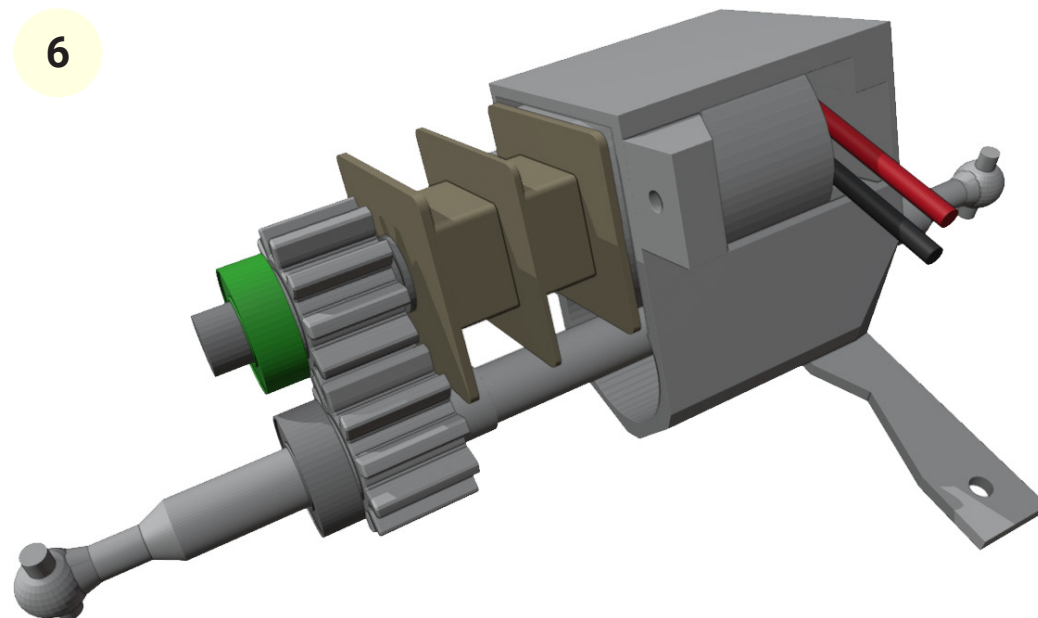


You need 2x 4mm long ~1.1mm thin wire (Best are paper clips.) and 3x 3x6x2.5mm bearings.

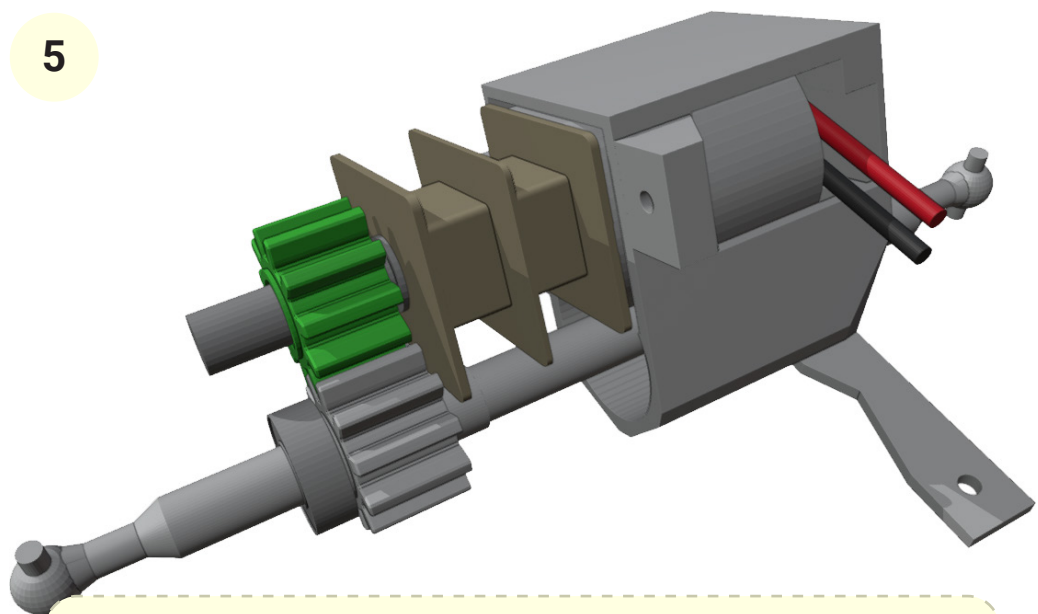
4



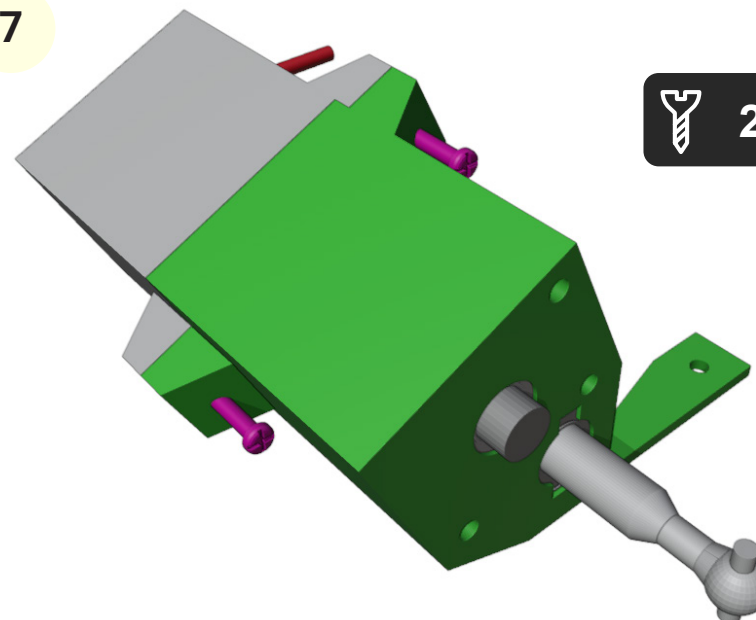
6



5



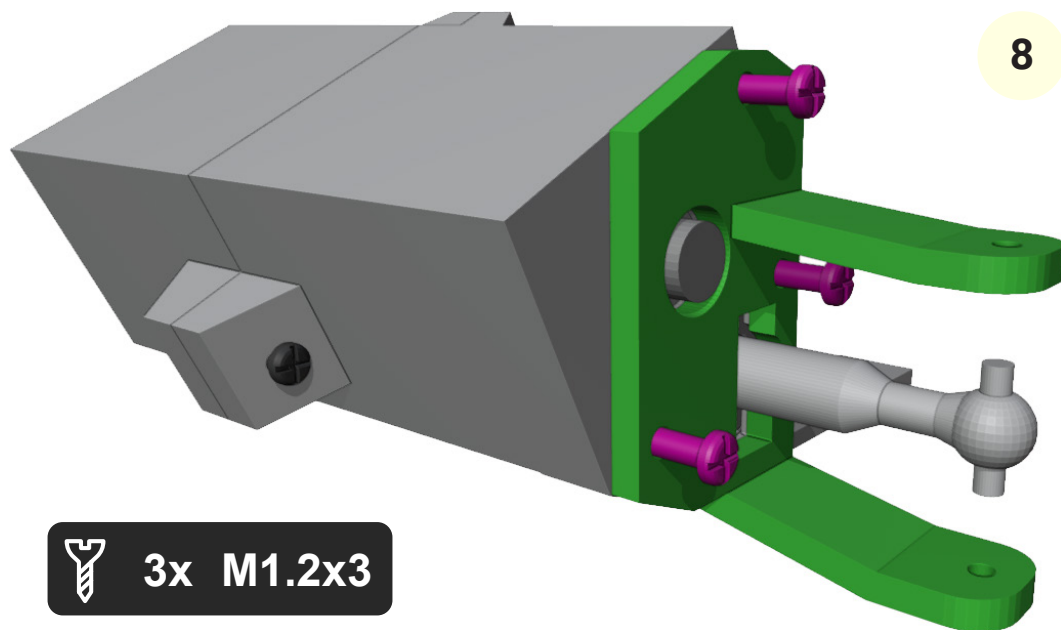
7



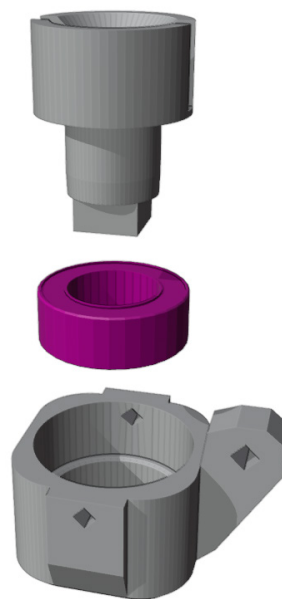
 2x M1x5



You can choose motor RPM. For faster driving use 500 - 750 RPM. I have used 300 RPM.



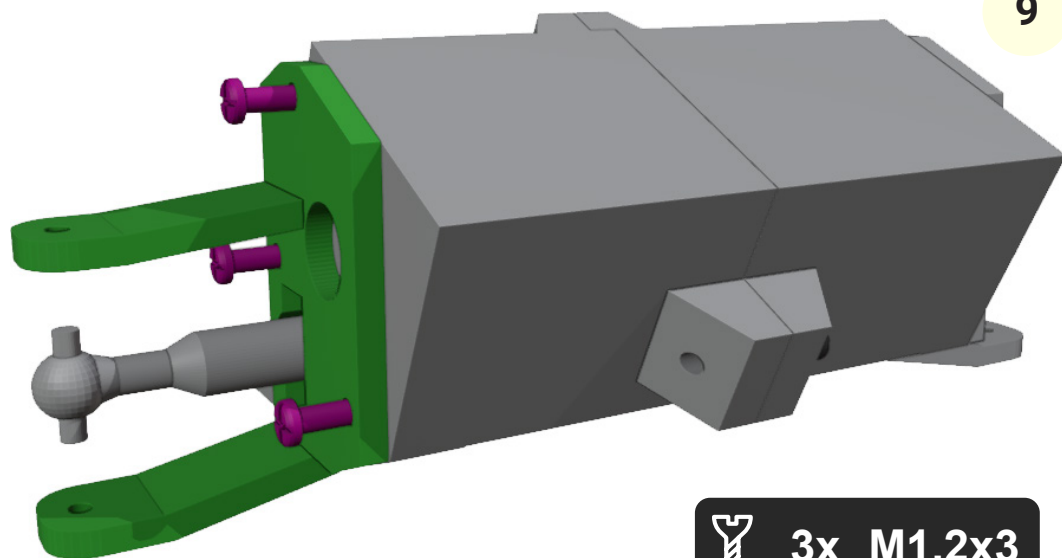
 3x M1.2x3



2x

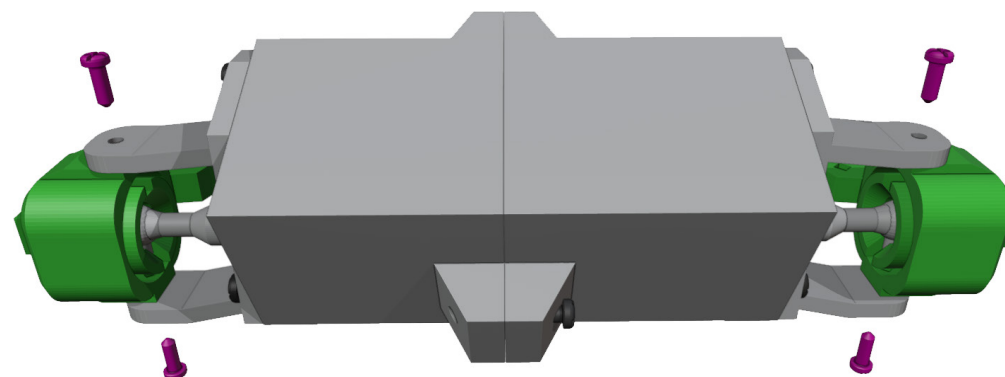


Bearings 5x8x3 has to fit very tight on axle. If axle is too big, you can use sandpaper.

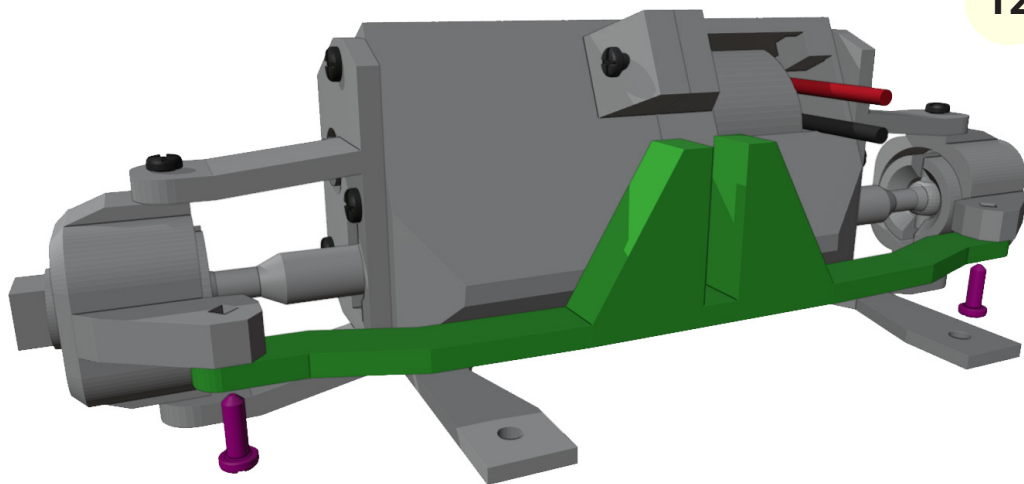


 3x M1.2x3

 4x M1x4



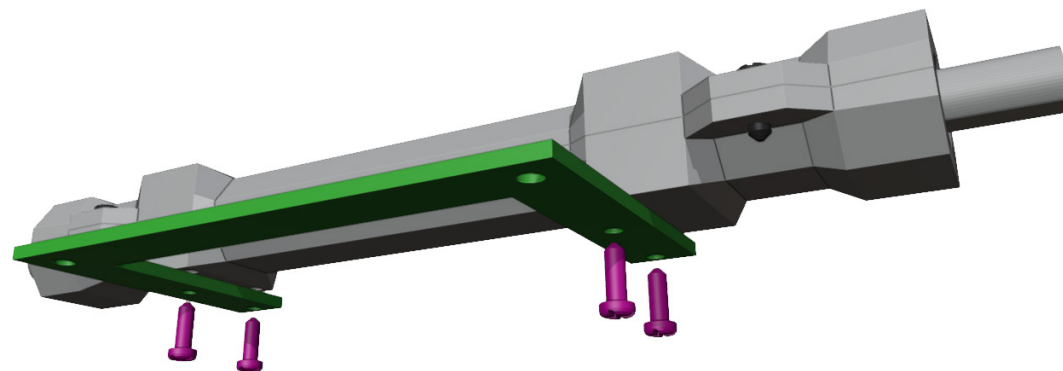
12



2x M1.2x4

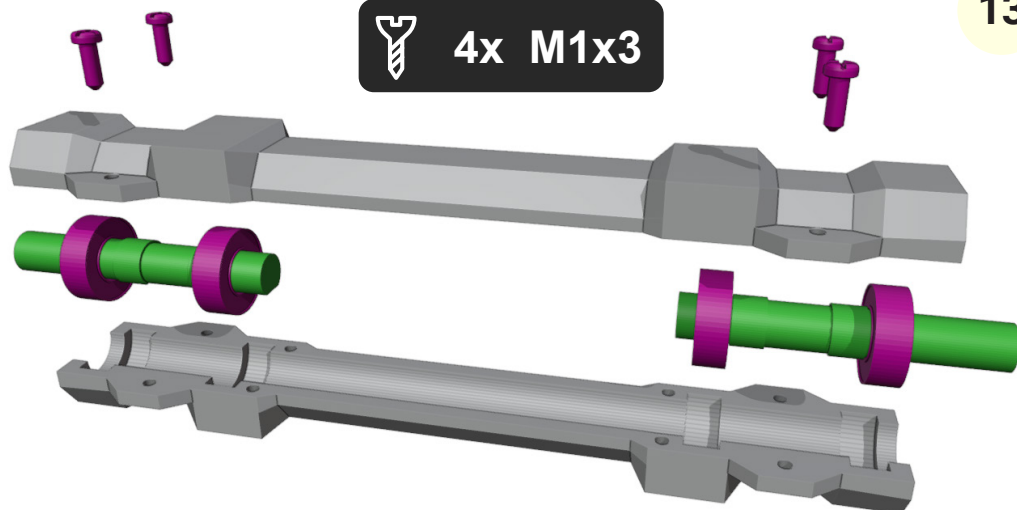
14

4x M1x3



13

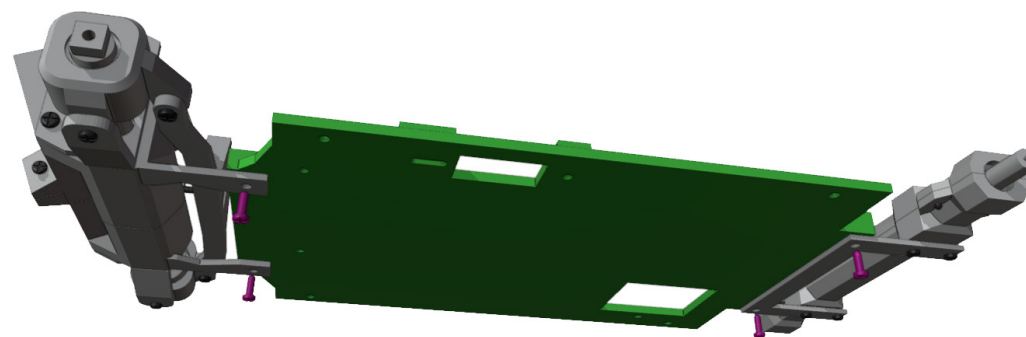
4x M1x3



Bearings 3x6x2.5 should fit quite firm to axle. If necessary, you can again use sandpaper.

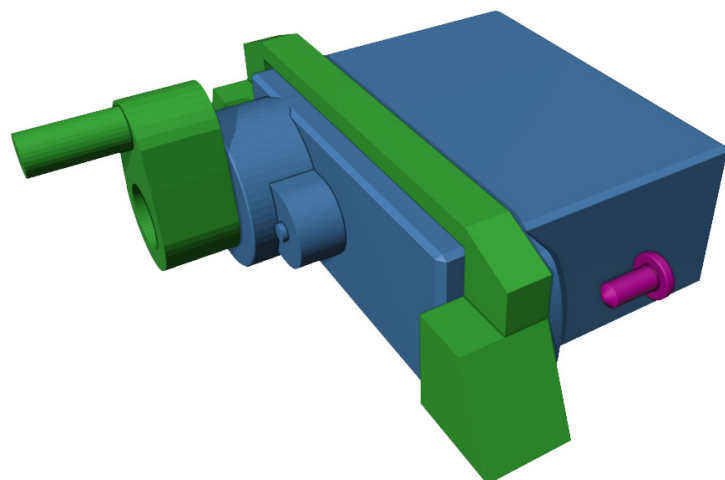
15

4x M1.2x4

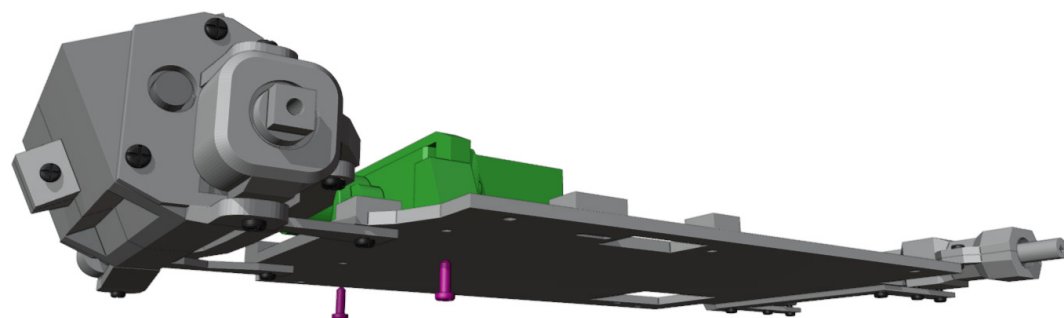




Steering pin have to be very tight so it won't slip during steering.

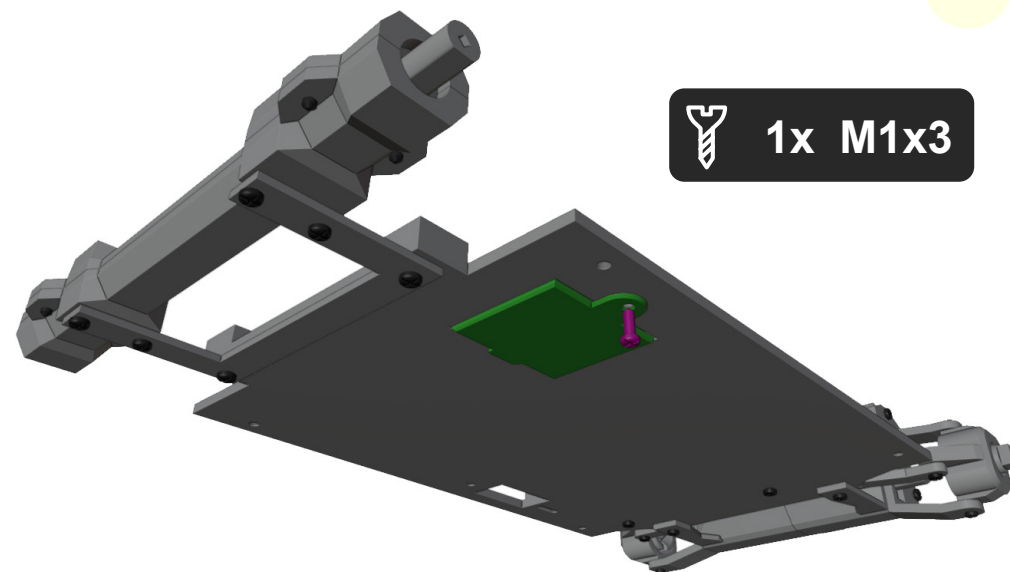


16



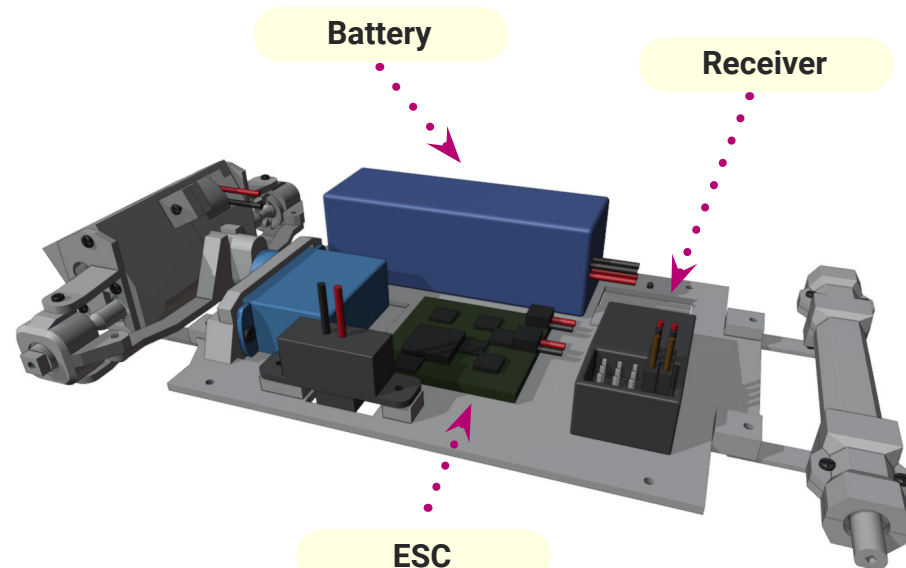
2x M1x5

17



1x M1x3

18

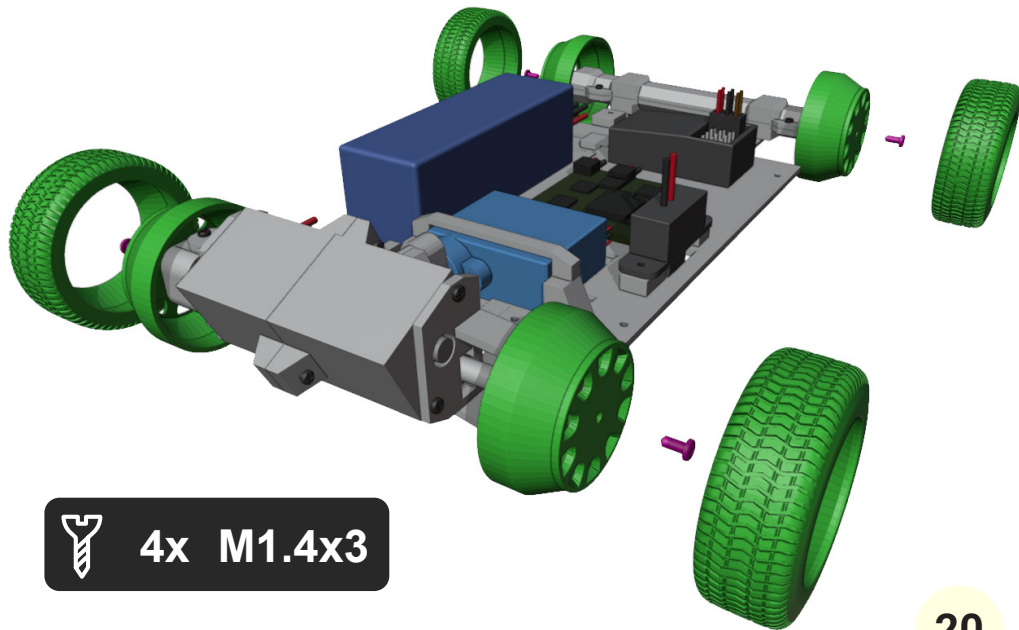


Battery

Receiver

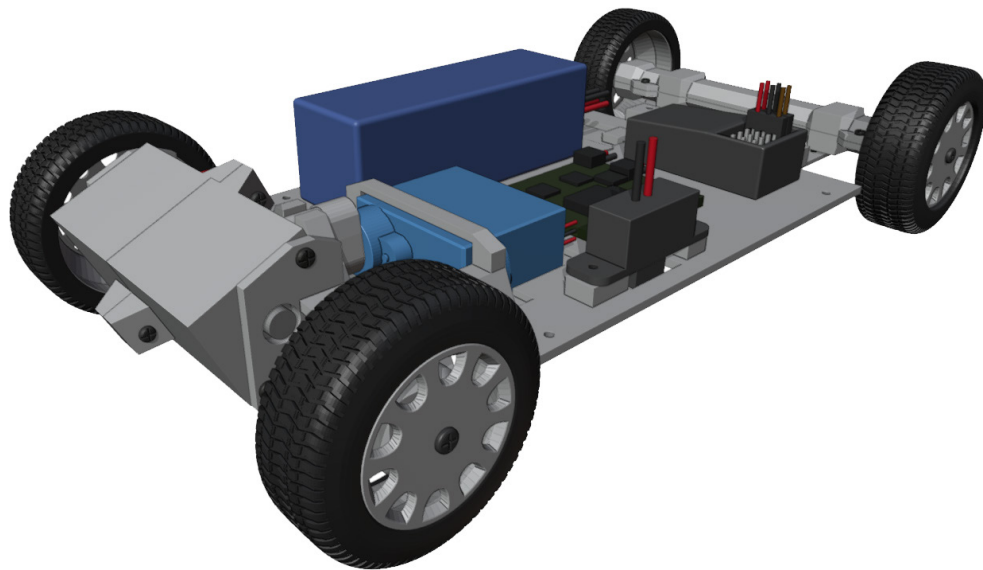
ESC

19



Great job!

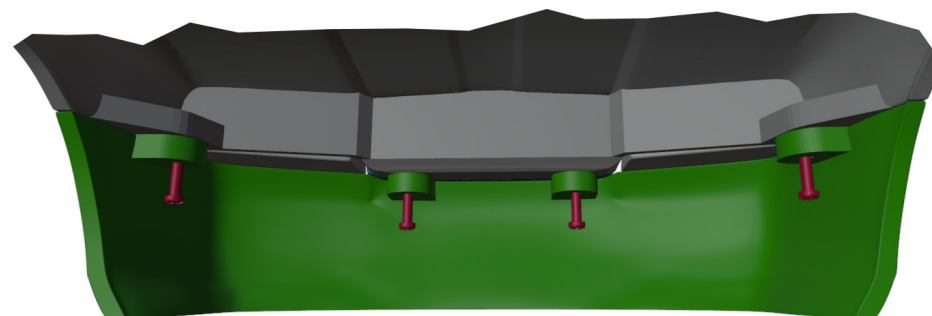
The chassis is done!
Now let's do the body.





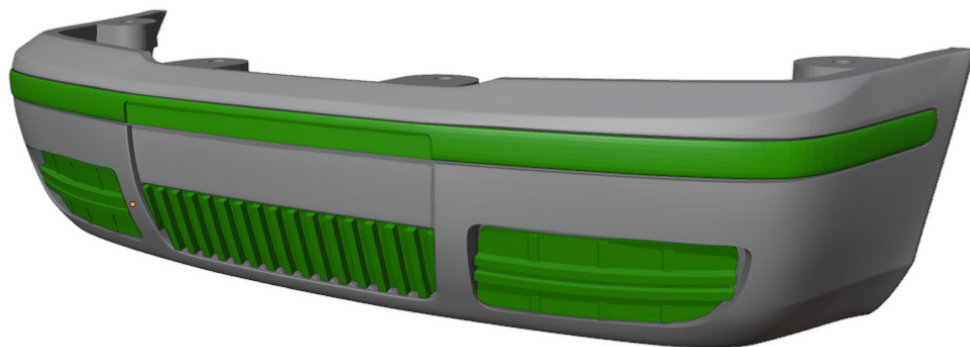
1

 4x M1x5



3

 4x M1x4



2



4

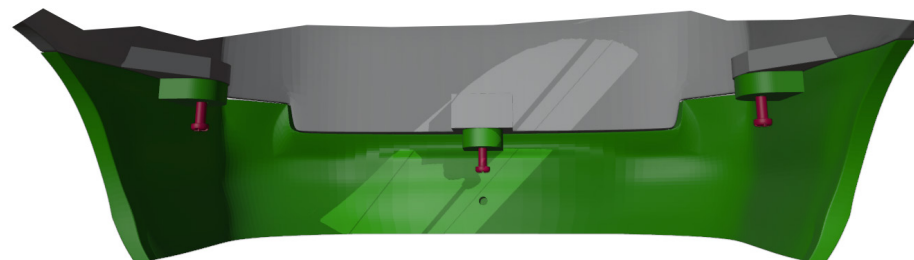


5

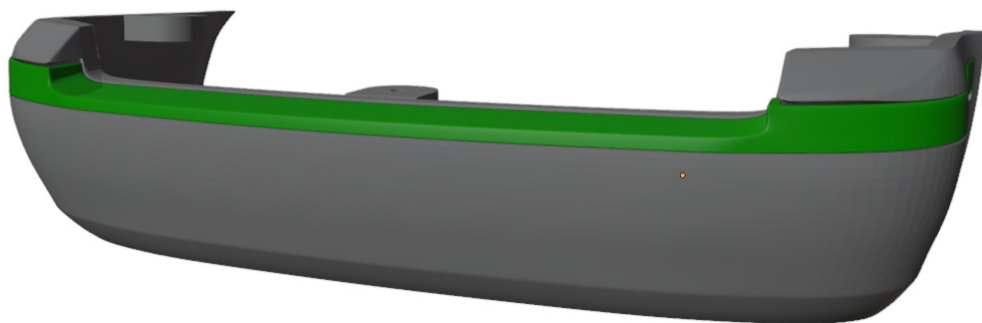


7

 3x M1x4

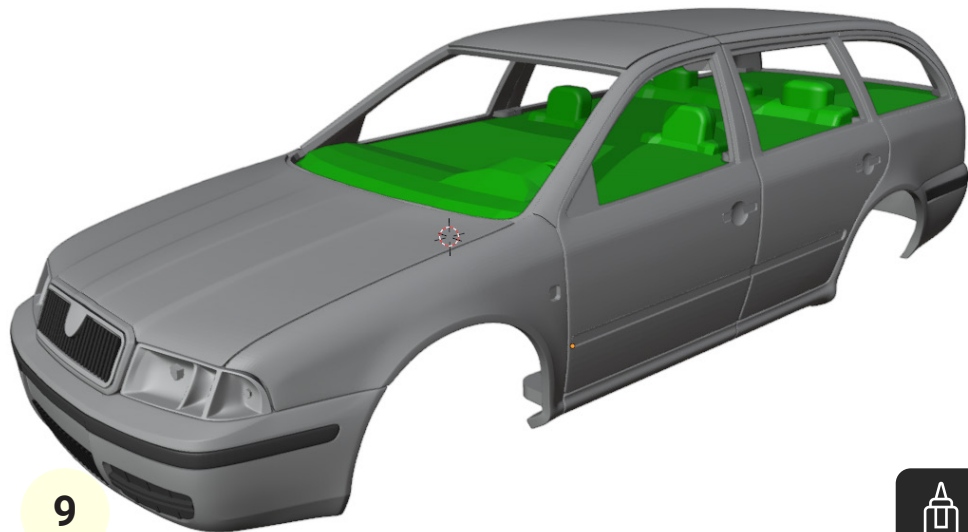


6

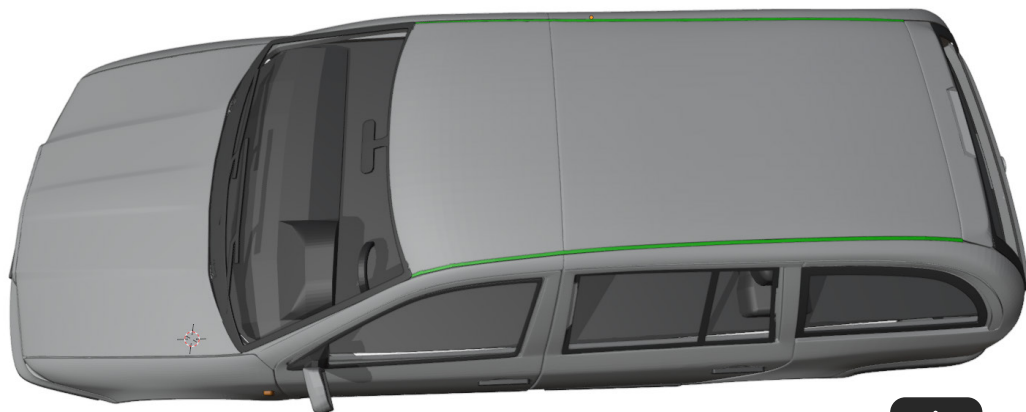


8





13



Great job!

We are done...

For more models, visit:

www.3drcmodels.com

